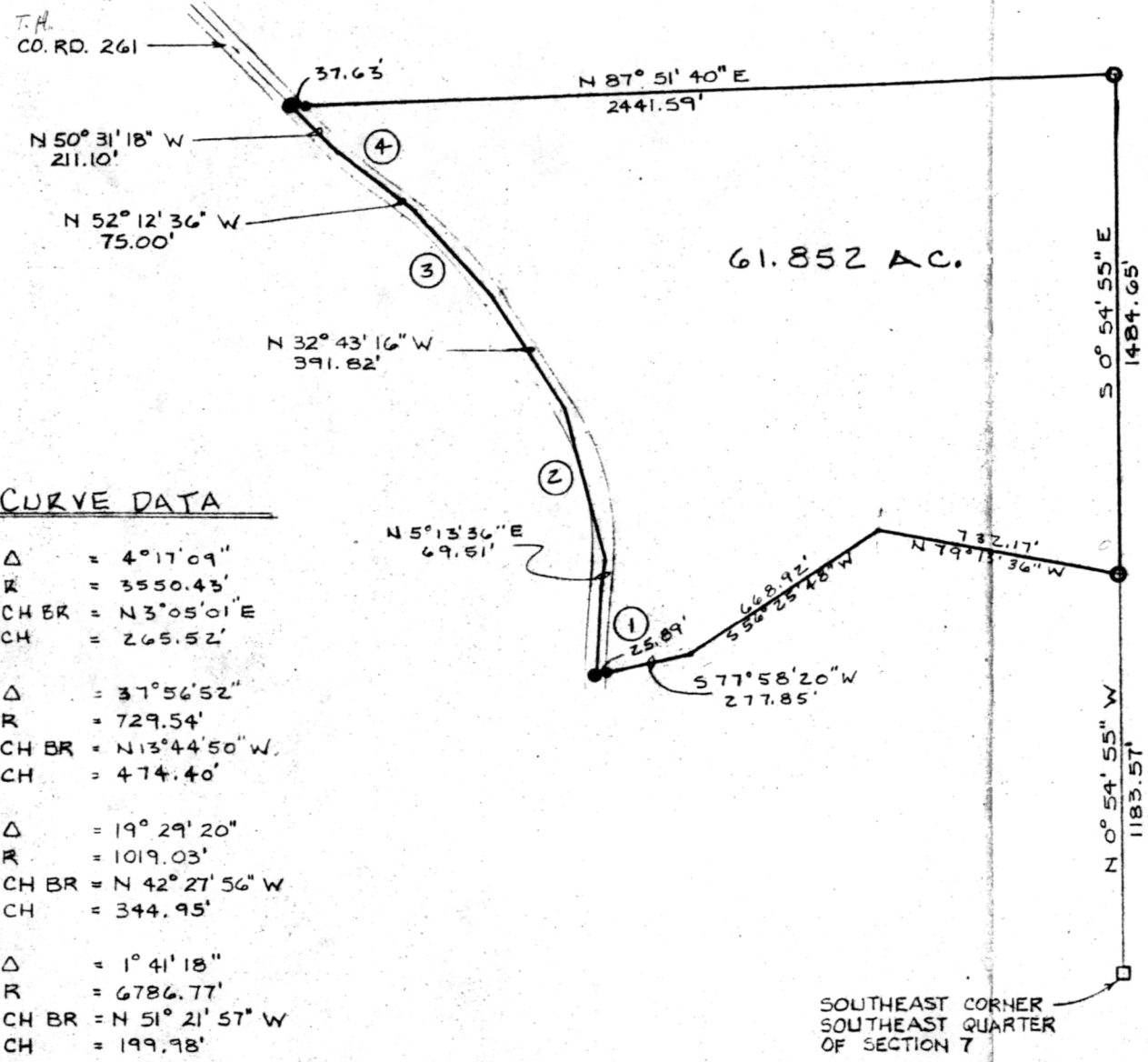




LEGEND

- STONE FOUND
- IRON PIN FOUND
- IRON PIN SET



CURVE DATA

- ① Δ = 4° 17' 09"
R = 3550.43'
CH BR = N 3° 05' 01" E
CH = 265.52'
- ② Δ = 37° 56' 52"
R = 729.54'
CH BR = N 13° 44' 50" W
CH = 474.40'
- ③ Δ = 19° 29' 20"
R = 1019.03'
CH BR = N 42° 27' 56" W
CH = 344.95'
- ④ Δ = 1° 41' 18"
R = 6786.77'
CH BR = N 51° 21' 57" W
CH = 199.98'

REVISIONS	DATE	APP'D.	DRAWN	DATE
			KAH	5-76
			APPROVED	SCALE
				1" = 400'
			FIELD BOOK	

BENDER, GRINDLE, RAIKE, INC.
 ENGINEERS ARCHITECTS SURVEYORS
 BOX 270, 2145 CLAREMONT AVE., ASHLAND, OHIO 44805 (419)289-1555



T 19 R 15
 PLAT OF SURVEY FOR
 JAMES HUMPHREY (GRANTOR)
 SECTION 7, WASHINGTON TWP.
 HOLMES CO. OHIO

SHEET
 2
 OF 2