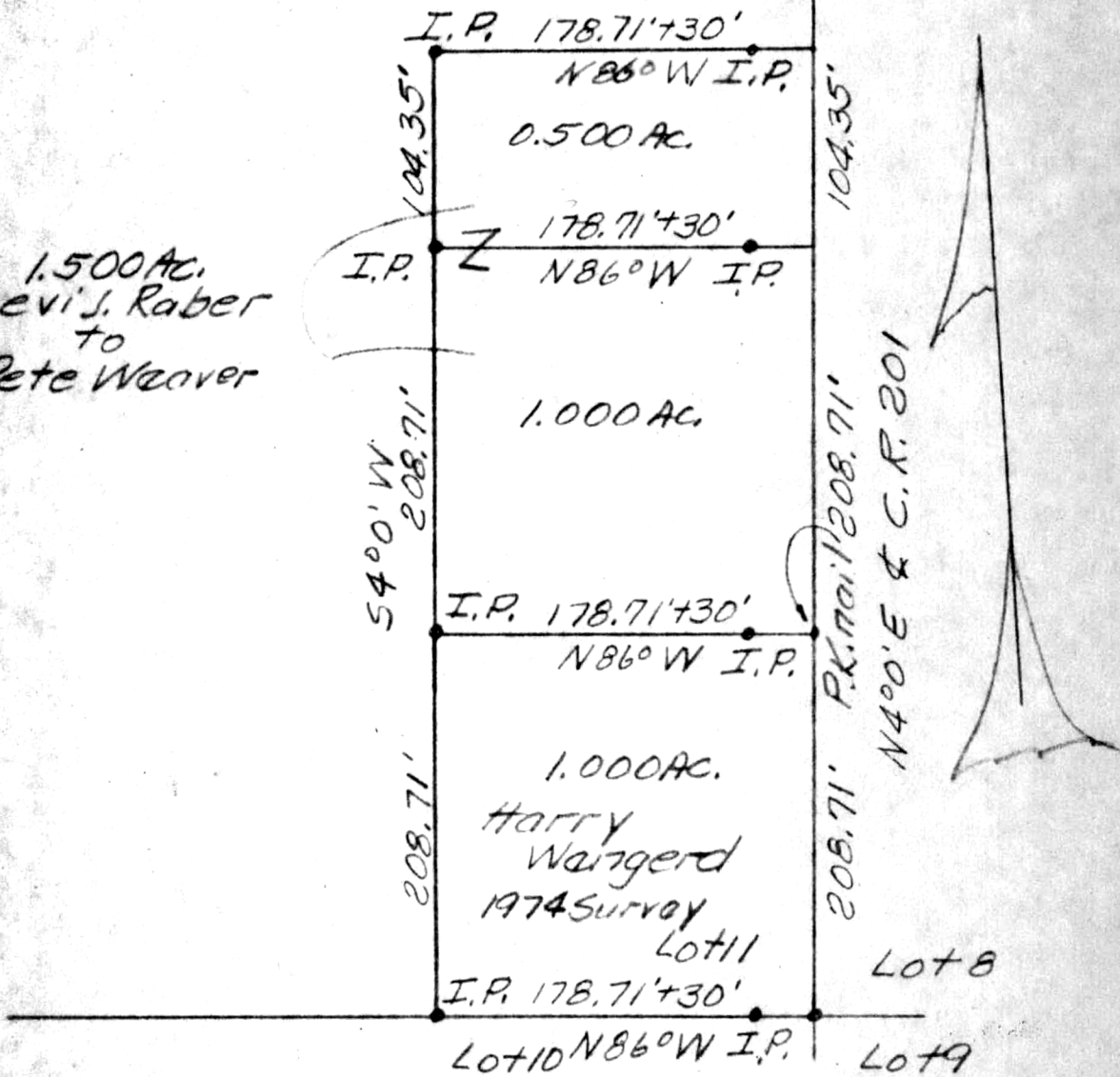


Levi J. Rober
Vol. 179 Pg. 331 Tract #1

1.500 AC.
Levi J. Rober
to
Pete Weaver



Scale: 1" = 100'

Holmes Limestone Co.

INDEXED 107441

LOT 11, 4 1/4, T10N, R6W
Salt Creek Twp, Holmes
Co., State of Ohio



REC'D: April 29, 1976

AT 4:50 CLOCK A.M.

RECORDED: April 29, 1976

HOLMES CO. Plat VOL. 7 PG. 106

FEE: \$2.00

Richard Yarrow
RECORDER

Robert L. Kasner P.S. 5193

Deed: Vol 194 Pg. 43

9/17/75

MAP OFFICE COPY