

INDEXED

VILLAGE OF MILLERSBURG

(P0018)-11

107006  
RECT'D: March 12, 1976

AT 1:15 O'CLOCK P.M.

RECORDED: March 15, 1976

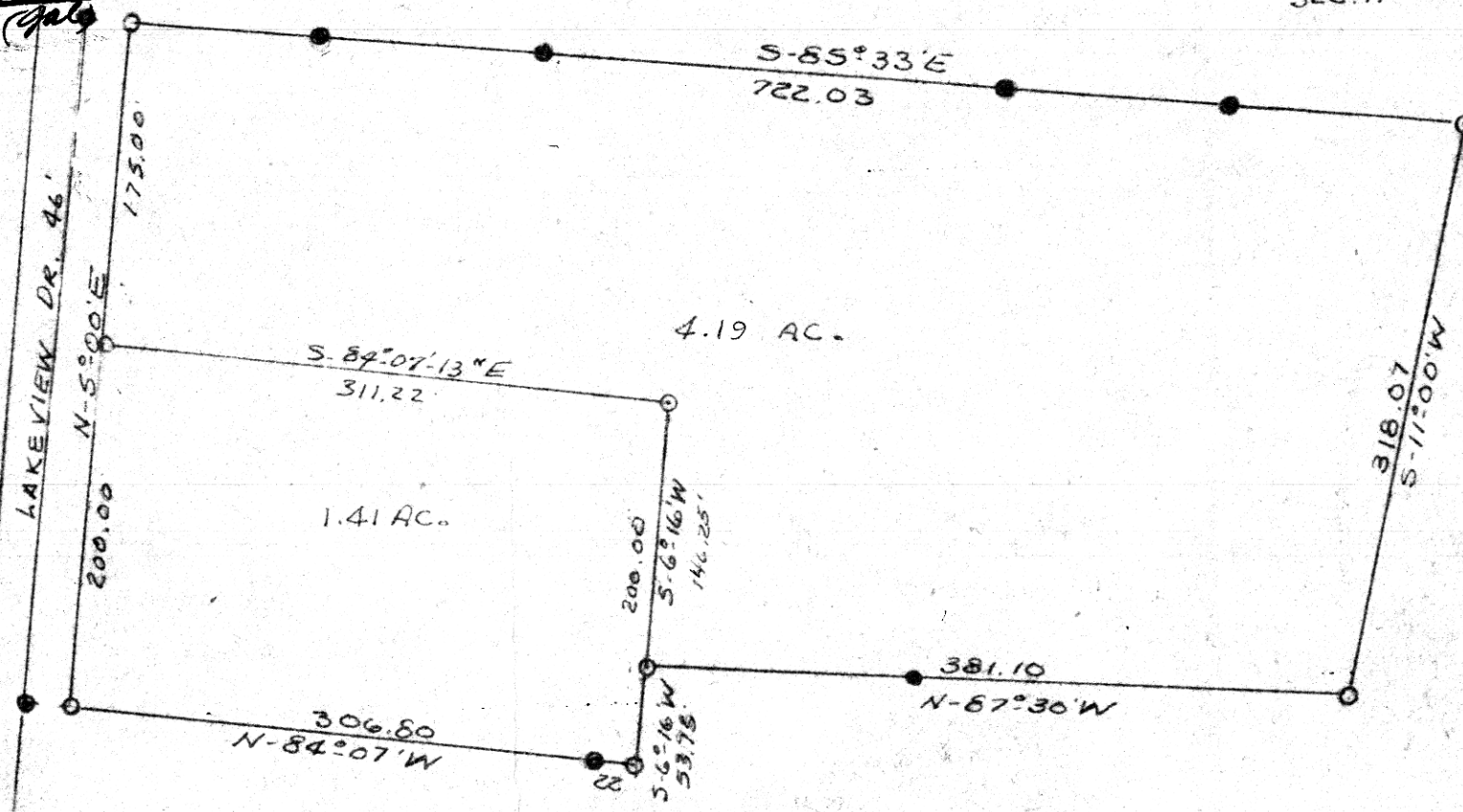
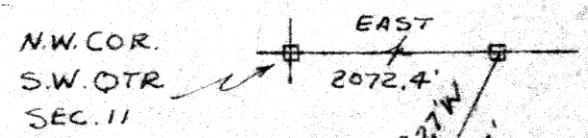
HOLMES CO. Plat VOL. 7 PG. 582

FEB 25 2-50

Richard Brown  
RECORDER

Deed: Vol 193, Pg. 367 & 369

HARDY TOWNSHIP  
S.W. QTR. SEC. 11  
TWP. 9 RANGE 7  
HOLMES COUNTY  
OHIO



SCALE 1" = 100'  
 O I.P. SET  
 ● I.P. FOUND

I CERTIFY THIS PLAT TO BE A  
 REVISED SURVEY OF SURVEY DONE PREVIOUSLY  
 TO CORRECT DESCRIPTION OF PLACE OF BEGINNING.

Clyde E. Purdy  
 Clyde E. Purdy R.S. 4900

MAP OFFICE COPY