

NW
11 15
20 16

N.W. Cor
N.W. Qtr
Sec. 16
T-9 R-4
Walnut Creek Twp.
Holmes Co., O.

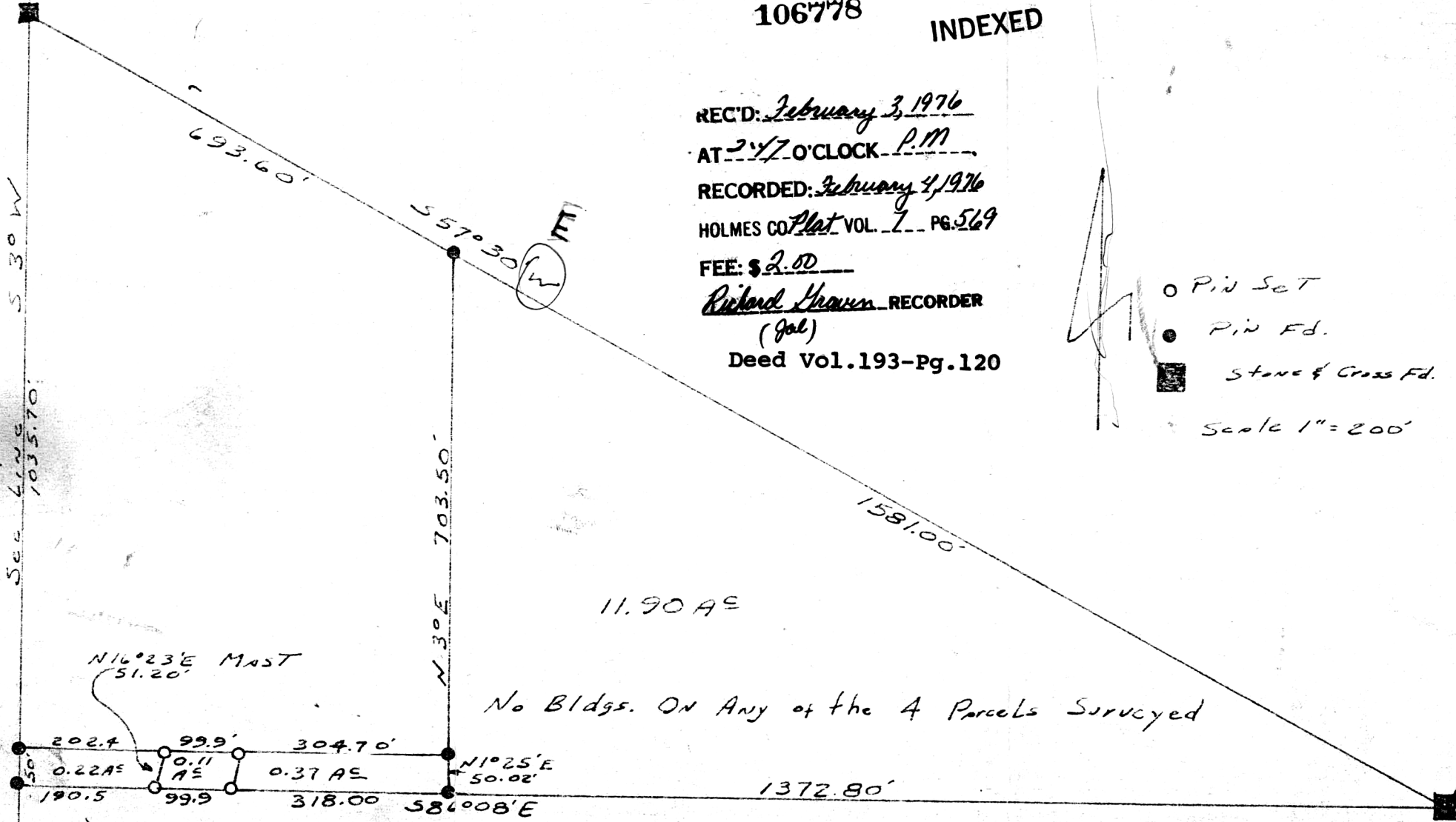
CHRIST E. MILLER SURVEY
N.W. QUARTER SECTION 16
TOWNSHIP 9 RANGE 4
WALNUT CREEK TOWNSHIP
HOLMES COUNTY, OHIO
COMPLETED MAY 18, 1974

106778

INDEXED

REC'D: February 3, 1976
AT 2:47 O'CLOCK P.M.
RECORDED: February 4, 1976
HOLMES CO. Plat VOL. 7 PG. 569
FEE: \$2.00
Richard Shann RECORDER
(Gal.)
Deed Vol. 193-Pg. 120

○ Pin Set
● Pin Fd.
■ Stone & Cross Fd.
Scale 1" = 200'



No Bldgs. ON Any of the 4 Parcels Surveyed

I CERTIFY THIS SURVEY TO BE CORRECT TO
THE BEST OF MY KNOWLEDGE AND BELIEF.

SIGNED William T. Burkey

WILLIAM T. BURKEY
REGISTERED SURVEYOR #5107

MAP OFFICE COPY