

106485

INDEXED

RECTD.

Dec. 22, 1975

AT 2:41 O'CLOCK PM

RECORDED:

Dec. 23, 1975

HOLMES CO. Plat VOL. 7 PG. 552

FEE: \$ 2.00

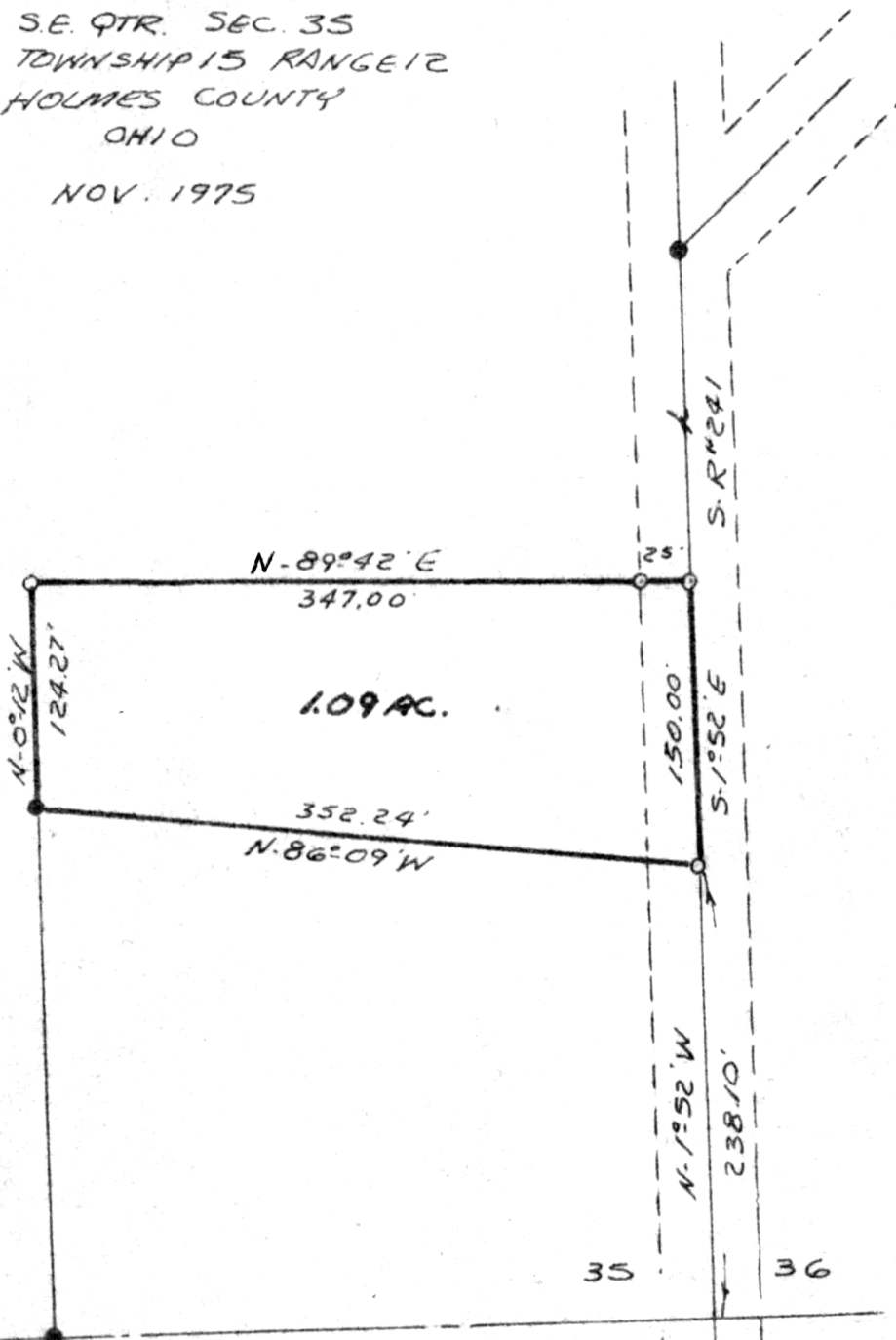
Richard Crane RECORDER

Deed Vol. 192-Pg. 641

*70m
4 inches angle*

SALT CREEK TOWNSHIP
S.E. QTR. SEC. 35
TOWNSHIP 15 RANGE 12
HOLMES COUNTY
OHIO

NOV. 1975



SCALE 1"=100'

O I.P. SET

● I.P. FOUND

I CERTIFY THIS SURVEY TO BE
CORRECT TO THE BEST OF MY

KNOWLEDGE

MAP OFFICE COPY

Clyde E. Purdy
CLYDE E. PURDY R.S. 74900
PURDY & McCollough, INC.