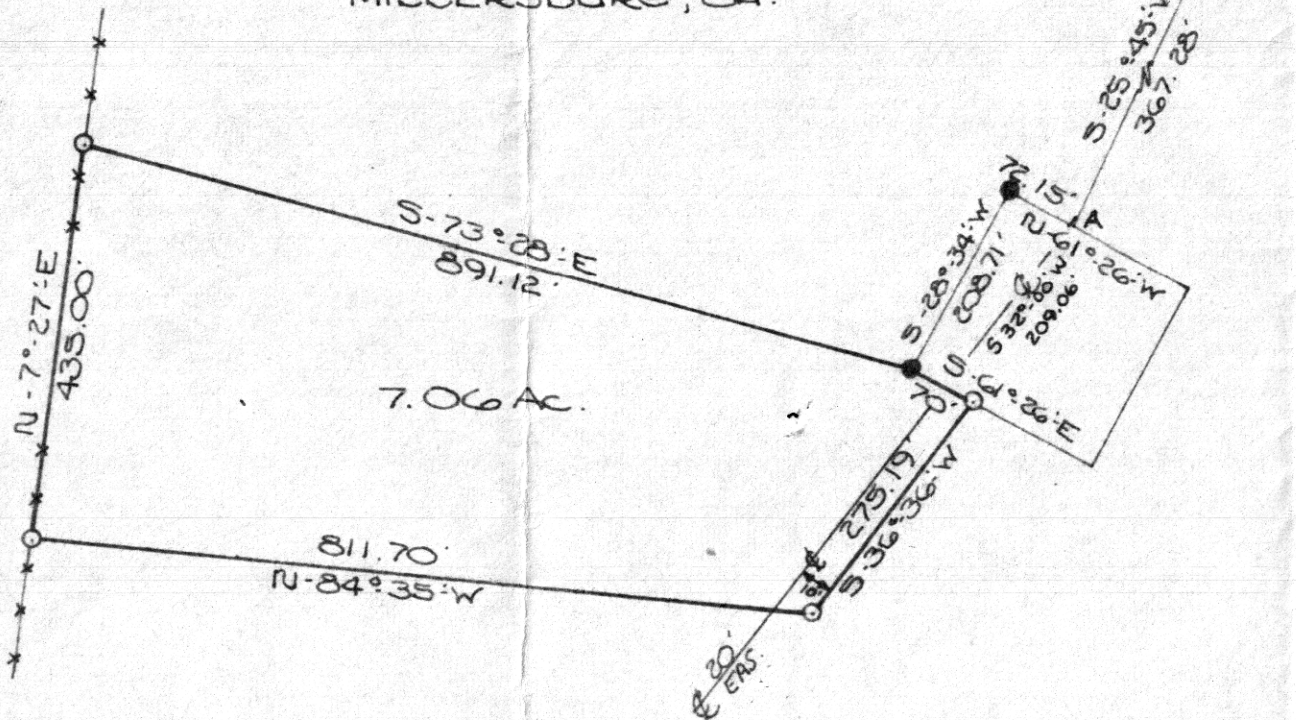


HARDY TOWNSHIP
 S.W. QTR. SEC. - 17
 T-9-N R-6-W
 HOLMES COUNTY
 OHIO
 NOV. 1974

SUR - LARRY CLARK
 R.D. # 4
 MILLERSBURG, OH.



I CERTIFY THIS SURVEY TO BE CORRECT
 TO THE BEST OF MY KNOWLEDGE.

Clyde E. Purdy
 CLYDE E. PURDY R.S.#4900
 PURDY & McCULLOUGH INC.
 ORRYVILLE, OH.

MAP OFFICE COPY

N-87°-00'-W	17	17
739.20'	17	17



SCALE 1" = 200'
 ● I.P. FOUND
 ○ I.P. SET

INDEXED

105487

REC'D: Aug. 19, 1975

AT 4:19 O'CLOCK PM

RECORDED: Aug. 20, 1975

HOLMES CO. Plat VOL. 7 PG. 501

FEE: \$ 2.00

Richard Gannon RECORDER
 (LR)

Deed Vol.191-Pg.570