

REC'D: July 24, 1975

AT: 1:37 O'CLOCK P.M.

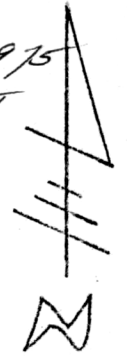
RECORDED: July 25, 1975

HOLMES CO. Plat VOL. 7 PG. 488

FEE: \$ 2.00

Ronald L. Laughery RECORDER
(L.V.)

Deed Vol. 191 Page 367

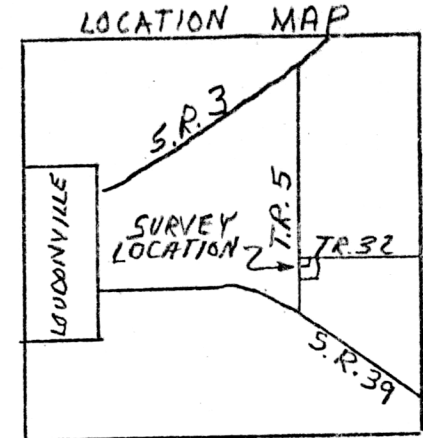


SYMBOLS

- O ⇒ Iron Pin Set
- S.R. ⇒ State Route
- T.R. ⇒ Township Road

APPROVED BY
TAX MAP OFFICE

Date 7/24/75
R.L.K.



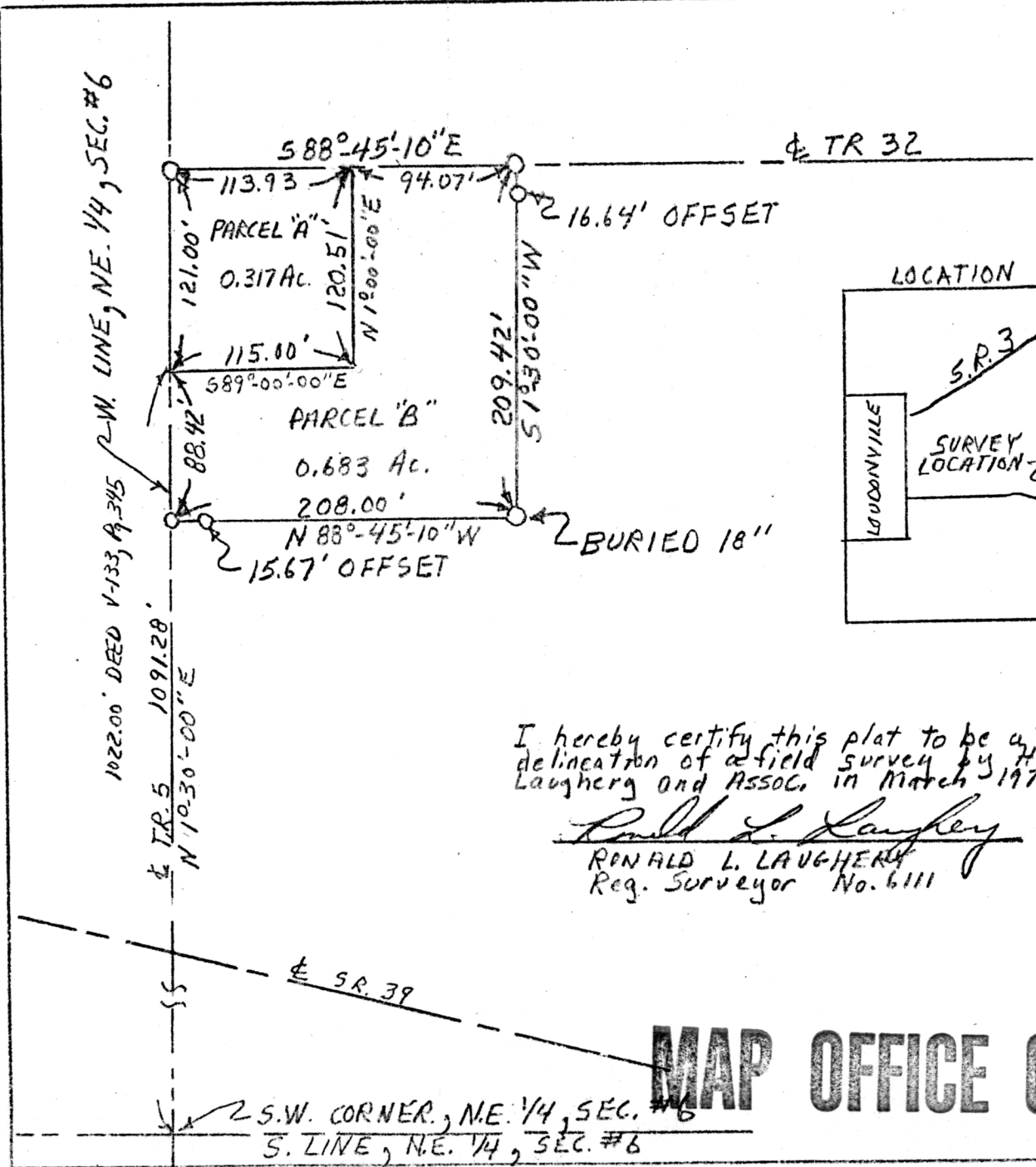
I hereby certify this plat to be a true delineation of a field survey by Hudnut-Laughery and Assoc. in March 1974.

Ronald L. Laughery
RONALD L. LAUGHERY
Reg. Surveyor No. 6111

HUDNUT, LAUGHERY & ASSOC.
ENGINEERING & SURVEYING
1283 CENTER LANE DRIVE
ASHLAND, OHIO 44805

Washington Twp, Sec. #6, Twp. #19, R. #15
Holmes County, Ohio
Drawn By: RLR: 7/10/75; Scale 1"=100'

MAP OFFICE COPY



S.W. CORNER, NE 1/4, SEC. #6
S. LINE, NE 1/4, SEC. #6

Beck