

PLAT MADE FOR  
WILLARD S. MILLER

BERLIN TOWNSHIP  
LOT NO. 21 1ST QTR.  
TWP. 9 RANGE 6  
HOLMES COUNTY  
OHIO

NOTE: THIS PLAT WAS  
MADE FROM PREVIOUS  
SURVEYS TO ESTABLISH  
ACRAGE OF TRACT.

105204 INDEXED

REC'D: July 21, 1975

AT 10:16 O'CLOCK A.M.

RECORDED: July 21, 1975

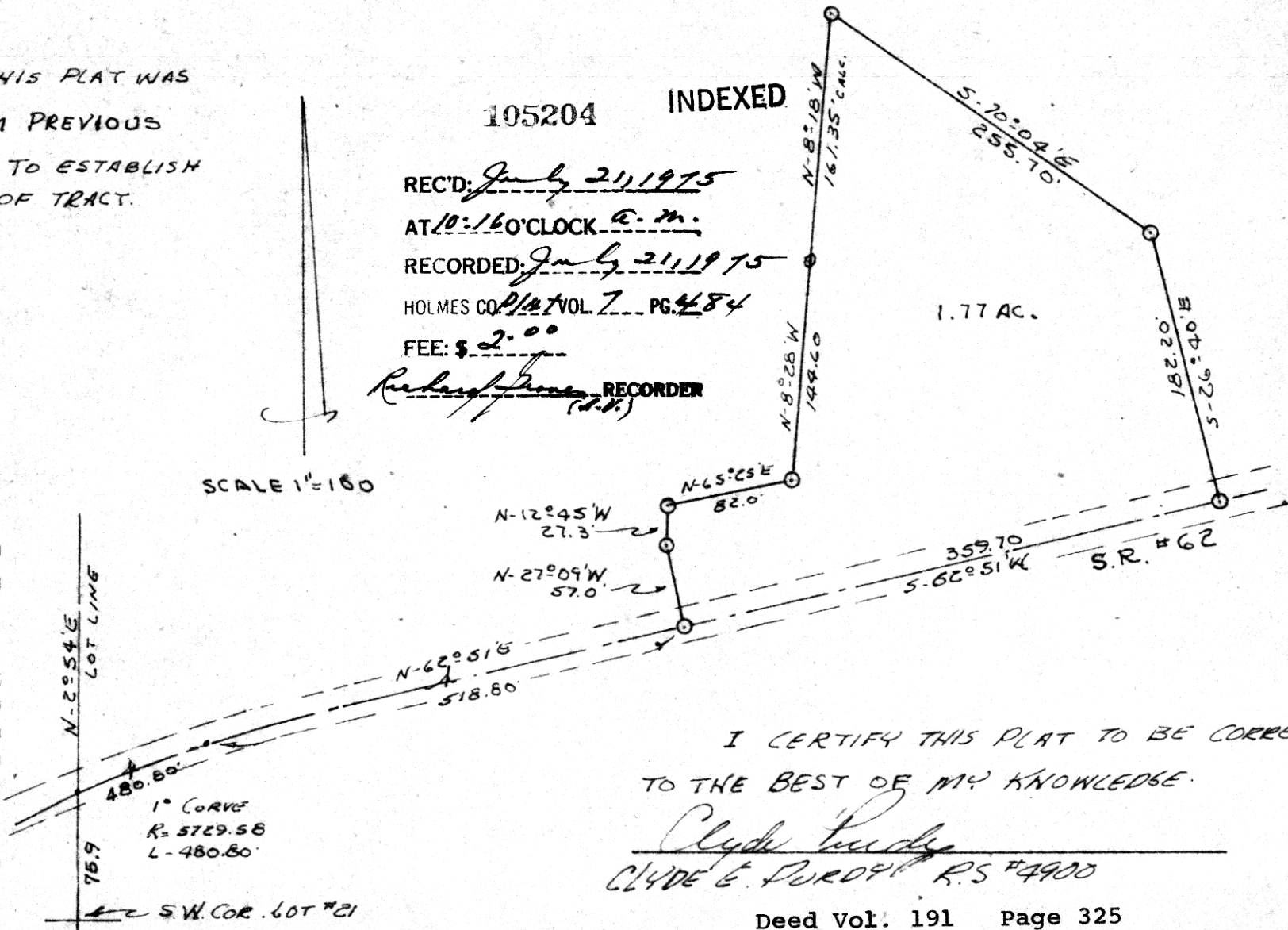
HOLMES CO. PLAT VOL. 7 PG. 484

FEE: \$ 2.00

Redauffner RECORDER  
(S.P.)

1.77 AC.

SCALE 1"=160'



I CERTIFY THIS PLAT TO BE CORRECT  
TO THE BEST OF MY KNOWLEDGE.

Clyde Purdy  
CLYDE E. PURDY R.S. #4900

MAP OFFICE COPY