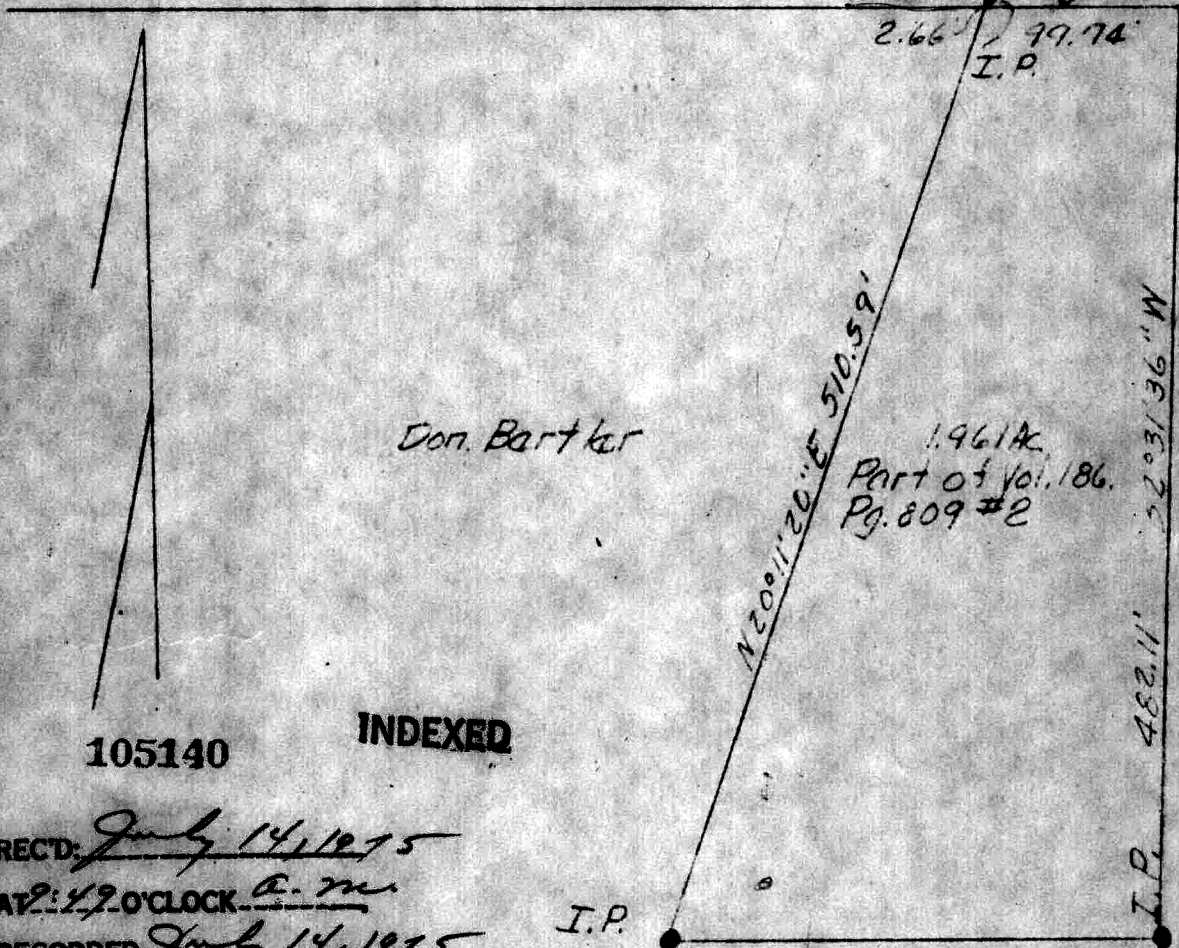


588° 54' 17" E

Post at N.E. corner
NW 1/4 of SE 1/4 59, T8N &
R. 5 Pg. 140 & R7W



Don Bartler

1.961 Ac.
Part of Vol. 186.
Pg. 809 #2

105140

INDEXED

RECD: July 14, 1915
 AT: 4:30 O'CLOCK P.M.
 RECORDED: July 14, 1915
 HOLMES CO. Vol. 7 PG. 475
 FEE: \$ 2.00

Robert L. Kasner RECORDER
 (R.L.K.)

Deed Vol. 191-Pg. 250
 Scale: 1" = 100'

I.P.

N 89° 13' 33" W 254.72'

I.P.

759.1'

482.1'

1128.4'

22° 31' 36" W

SE corner NW 1/4 SE 1/4
59, T8N & R7W

Stone



PLAT OF A SURVEY
 Don Bartler
 to

Daway Garver
 N.W. 1/4 of S.E. 1/4 of 59, T8N
 & R7W of Mech. Twp., Hol. Co.,
 Ohio.

Robert L. Kasner P.S. 5193

6/25/15

MAP OFFICE COPY