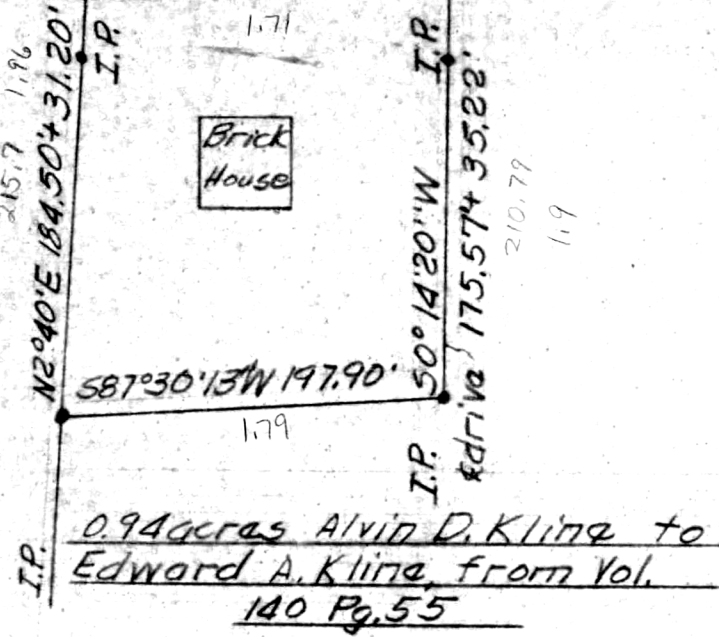
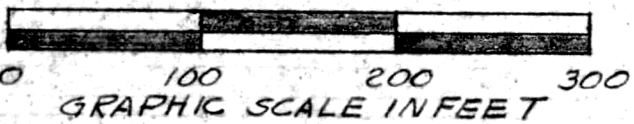


N88°47'58"E 188.53' S85°09'5"W 855.86'  
E.S.R. 39

E.S.R. 39



0.94 acres Alvin D. Kline to Edward A. Kline, from Vol. 140 Pg. 55



25.19 chains (1662.54') Vol. 111 Pg. 401  
Post 864' I.P. N2°0'0"E 201' M.S.  
1597.54' M

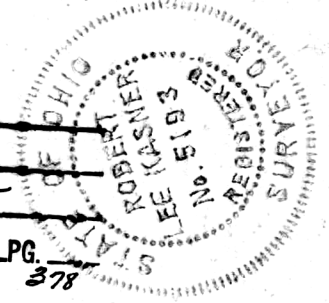
SW CORNER 49.63 acre tract Vol. 111 Pg. 401

APPROVED BY  
TAX MAP OFFICE  
Date Dec. 30, 74 9m

INDEXED

103705

REC'D Dec. 30, 1974  
AT 11:04 PELICK AIR  
RECORDED Jan. 2, 1975  
BOOKED Plat VOL 7 PG. 378  
FEE 2.00  
Richard Shraver RECORDER



Deed Vol. 189-Pg. 513

PLAT OF SURVEY OF  
0.94 acre tract Lot 6, 3/4  
T9N, R5W, Walnut Creek  
Twp, Holmes Co., Ohio

Robert L. Kasmer P55193 PE28820  
11/2/74

**MAP OFFICE COPY**

John W.