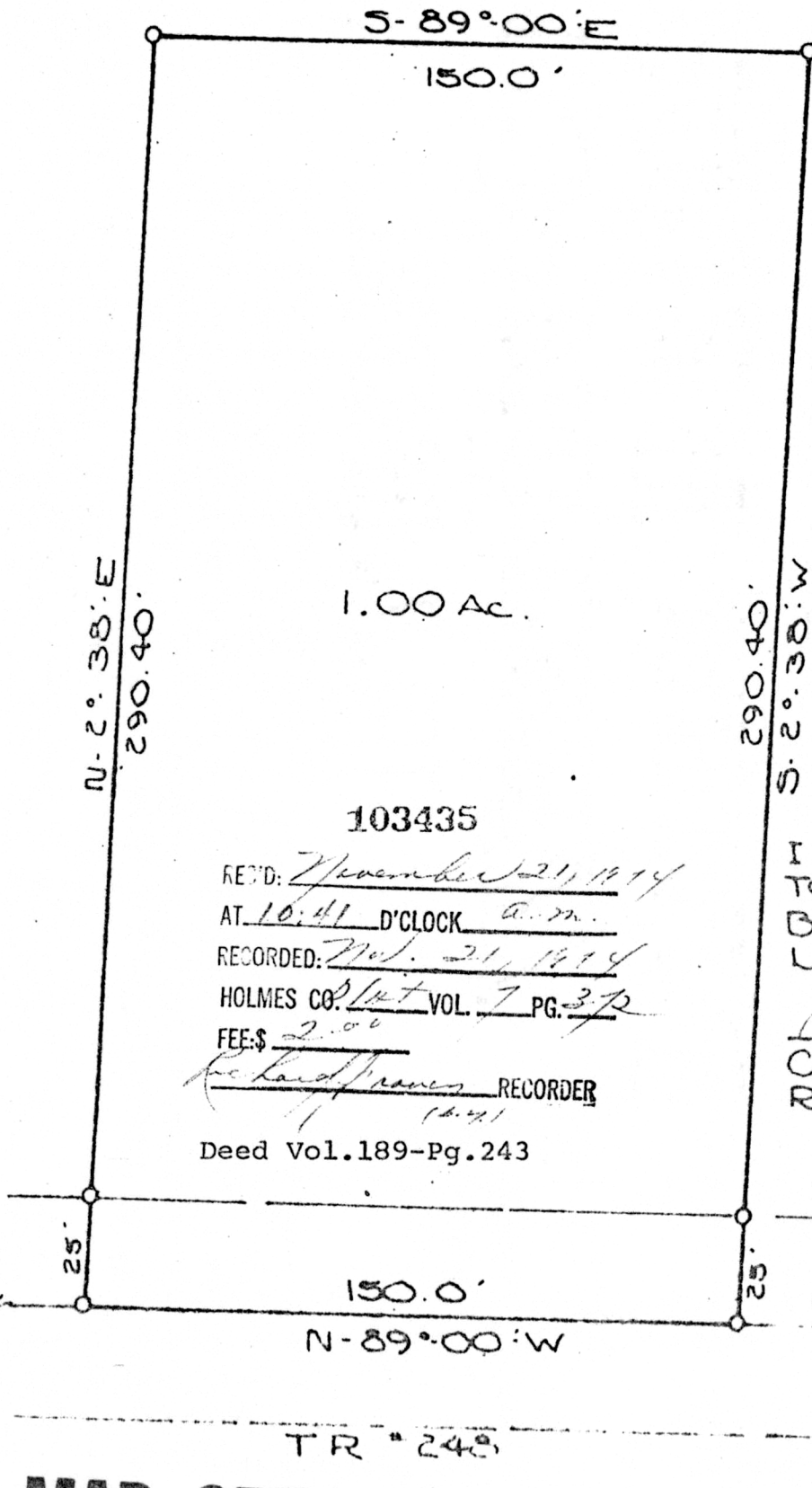


OCT. 1974

PRAIRIE TOWNSHIP
N.E. QTR. SEC. 34
TWP. 14 RANGE 13
HOLMES COUNTY
OHIO

ALBERT
SWARTZENTRUBER
FARM



1.00 Ac.

103435

REC'D: November 21, 1974

AT 10:41 D'CLOCK a.m.

RECORDED: Nov. 21, 1974

HOLMES CO. Plot VOL. 7 PG. 32

FEE: \$ 2.00

Richard James RECORDER
(12/4)

Deed Vol. 189-Pg. 243

SCALE 1" = 40'
● IRON PIN FOUND
○ IRON PIN SET

I CERTIFY THIS SURVEY
TO BE CORRECT TO THE
BEST OF MY KNOW-
LEDGE.

Clyde E. Purdy
CLYDE E. PURDY
R.S. #4900

MAP OFFICE COPY

Tom