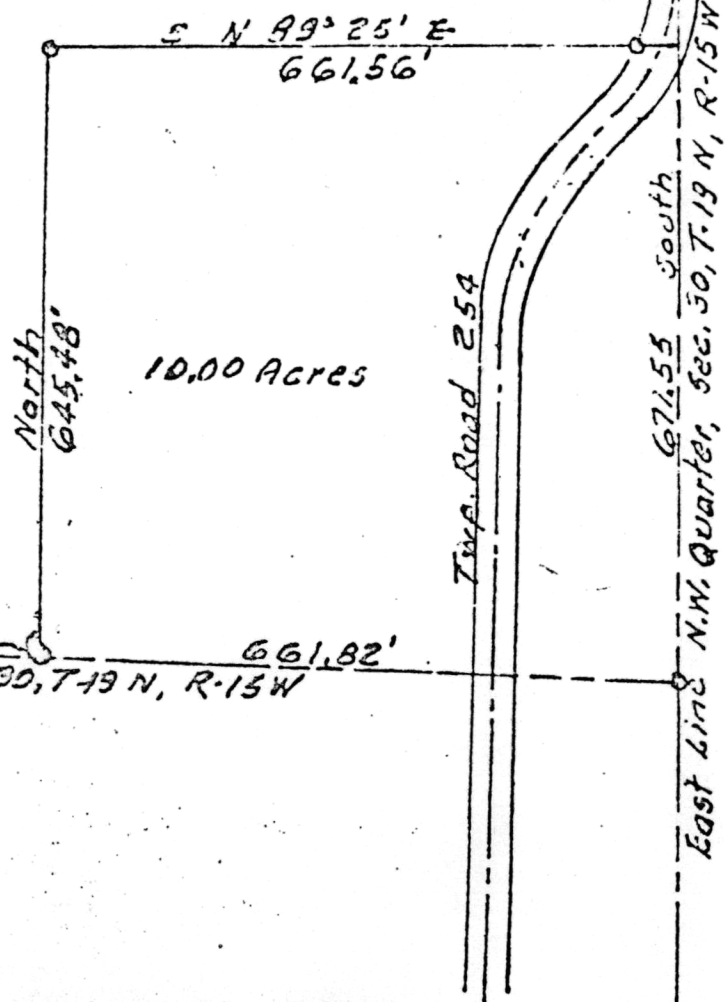


Bush

PLAT SHOWING SURVEY
OF 10.00 ACRES
NORTHWEST QUARTER, SECTION 30
KNOX TOWNSHIP
HOLMES COUNTY, OHIO.

T19 R15

Ashland County
Holmes County



10.00 Acres

1978' ±
South Line N.W. Quarter Sec. 30, T.19 N, R.15 W
N 85° 19' 40" W
661.82'

103235

REC'D: Oct. 29, 1974
AT 3:40 D'CLOCK PM
RECORDED: Oct. 30, 1974
HOLMES CO. Plat VOL. 7 PG. 348
FEE \$ 2.00
Richard Brown RECORDER
Deed Vol. 189-Pg. 64

MAP OFFICE COPY

July 10, 1974
Scale 1" = 200'
By: Shelby J. Edward
Reg. Surveyor 392