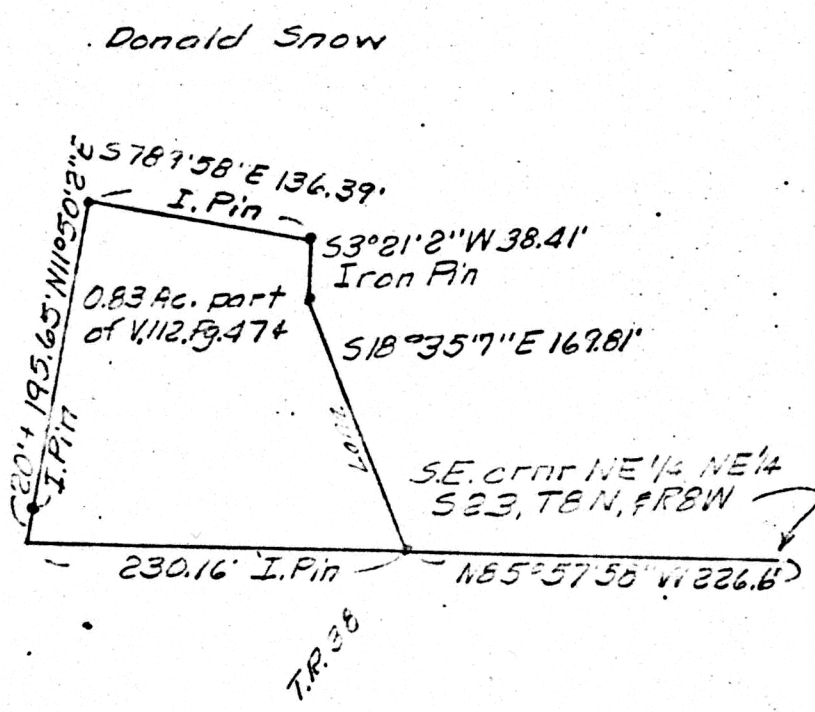


195.65
20.
215.65



Scale: 1"=100'

102821

REC'D: Sept. 6, 1974

AT 4:18 O'CLOCK P.M.

RECORDED: Sept. 9, 1974

HOLMES CO. VOL. 7, PG. 323

FEE: \$2.00

Richard Grady RECORDER

Deed Vol. 188 Page 588

DONALD SNOW
TO
RICHARD SNOW
Part of NE 1/4, NE 1/4 S 23 T 8 N R 8 W
Killbuck Twp., Holmes Co., Ohio
Robert L. Kasnar, P.S. 5193

712074

MAP OFFICE COPY