

100304

REC'D: *November 7, 1973*

AT *2:51* O'CLOCK *P.M.*

RECORDED: *Nov. 8, 1973*

HOLMES CO. *P/4* VOL. *7* PG. *151*

FEE: \$ *2.00*

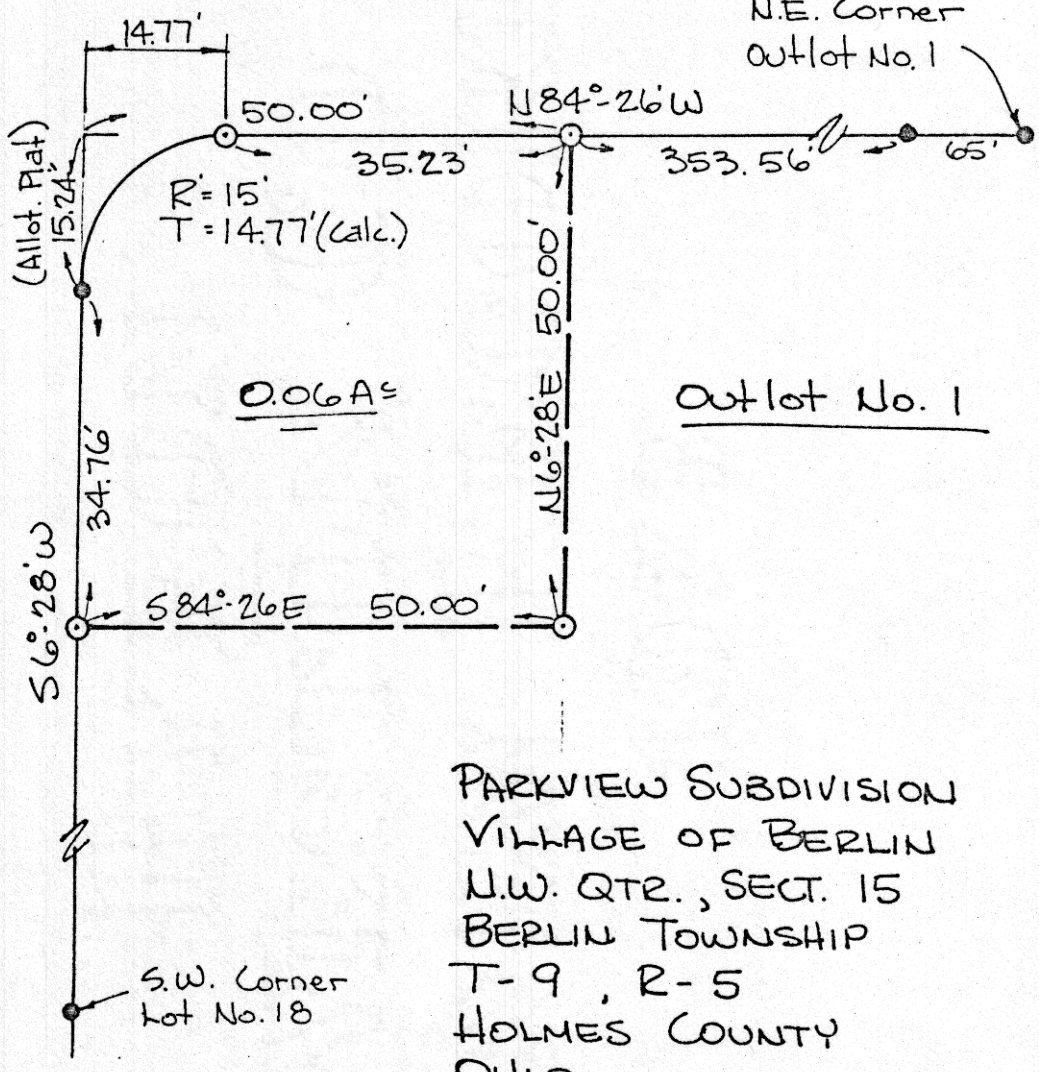
*Richard Kraven* RECORDER

Deed Vol. 185-Pg. 497

ELM STREET - 50'

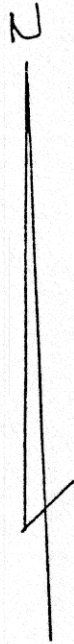
OAK STREET - 50'

N.E. Corner  
Outlot No. 1



Outlot No. 1

PARKVIEW SUBDIVISION  
VILLAGE OF BERLIN  
N.W. QTR., SECT. 15  
BERLIN TOWNSHIP  
T-9, R-5  
HOLMES COUNTY  
OHIO

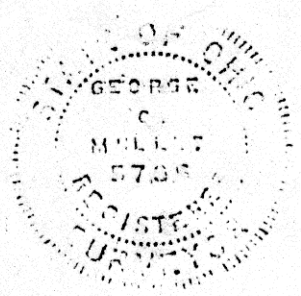


Scale: 1" = 20'

Survey for: Berlin Development Corp.  
May 5, 1973

I certify this survey to be correct  
to the best of my knowledge.

*George C. Mullett*  
Reg. Sur. # 5796



Job No. S-17-73

MAP OFFICE COPY