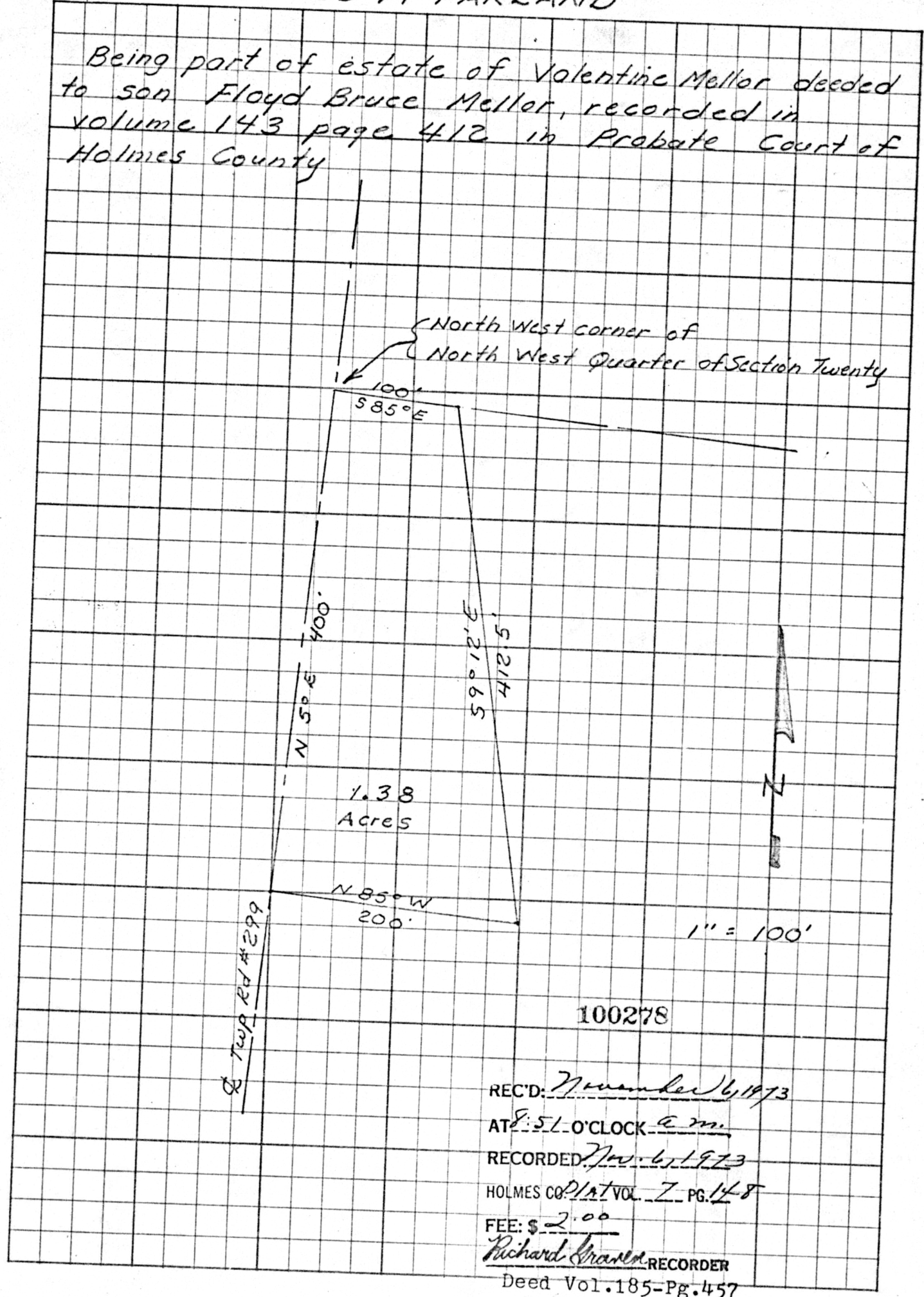


PROPERTY of  
CLYDE McFARLAND

Being part of estate of Valentine Mellor deeded  
to son Floyd Bruce Mellor, recorded in  
volume 143 page 412 in Probate Court of  
Holmes County



REC'D: November 6, 1973  
 AT: 8:51 O'CLOCK a.m.  
 RECORDED: Nov. 6, 1973  
 HOLMES CO. PLAT VOL. 7 PG. 148  
 FEE: \$ 2.00  
Richard Graves RECORDER  
 Deed Vol. 185-Pg. 457

MAP OFFICE COPY

7901-4 4x4 PER INCH LITHO IN U.S.A. TELEDYNE POST