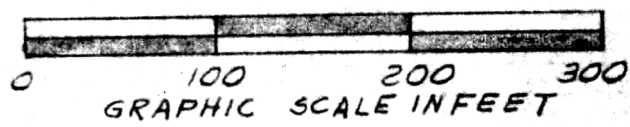
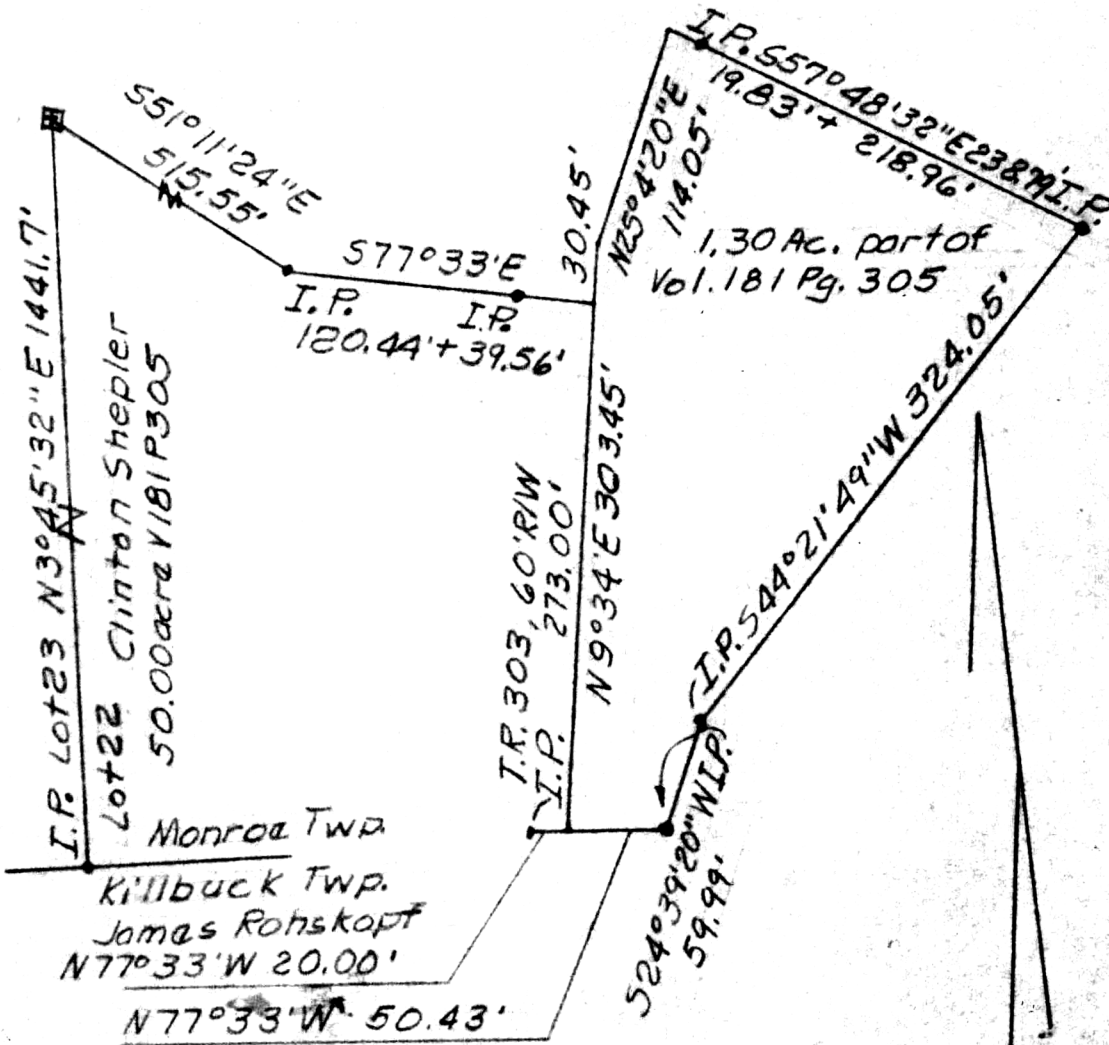


Stone NW corner
50 acre tract
V181P305



99433
RECD July 17, 1973
AT 3:25 O'CLOCK PM
RECORDED July 18, 1973
HOLMES CO. PLAT VOL. 7, PG. 87
FEE \$2.00

Richard Mann RECORDERS
Box 264 KILLBUCK



PLAT OF A SURVEY FOR
JOSEPH + DOROTHY SHEPLER
(Grantee)

Known as part of Lot 22, 4 1/4, T9N 4
RBW of Monroe Twp, Holmes Co, Ohio
Robert L. Kasnar, Registered Surveyor #5193
7/16/73

MAP OFFICE COPY