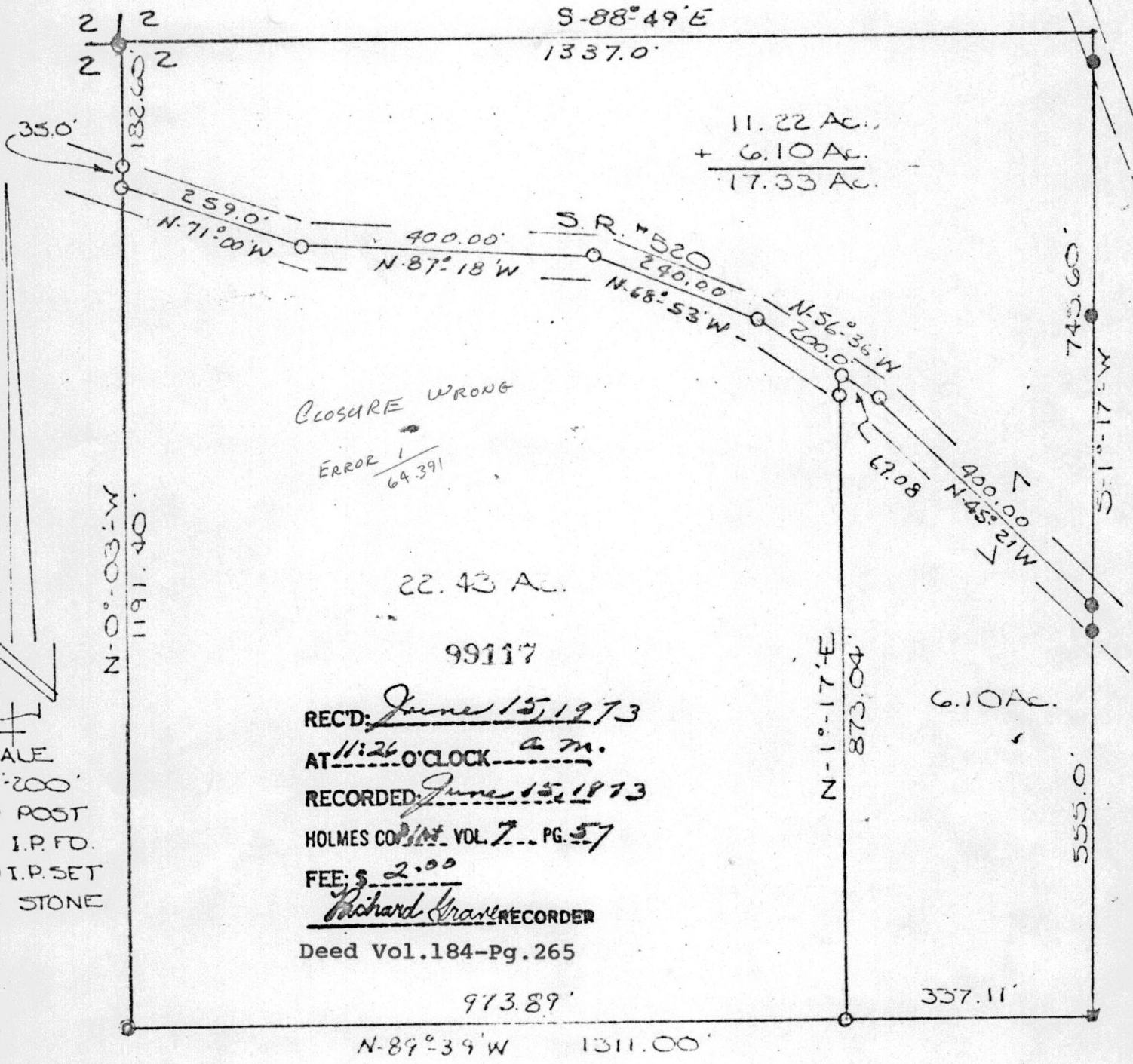


MAY - 1973

RICHLAND TOWNSHIP  
S.E. QTR. SEC. 2  
TWP. - 8 RANGE - 9  
HOLMES COUNTY  
OHIO



I CERTIFY THIS SURVEY TO BE CORRECT TO THE BEST OF MY KNOWLEDGE.

Clyde E. Purdy  
CLYDE E. PURDY R.S. #4900

MAP OFFICE COPY