

98922

REC'D: May 25, 1973

AT 10:31 O'CLOCK AM

RECORDED: May 25, 1973

HOLMES CO. PLAT VOL. 7 PG. 41

FEE: \$2.00

Richard Graves RECORDER Henry N. Miller

Deed Vol. 184-Pg. 48

N.E. Cor. N.W. Cor.
N.W. Qr. N.E. Qr.
Sec. 20 Sec. 20

East Line N.W. Qr. Sec. 20
West Line N.E. Qr. Sec. 20

Henry N. Miller

MAP
SHOWING LOCATION
OF A TRACT OF LAND
DEEDED BY
HENRY N MILLER
TO
WAYNE J. HOSTETTLER
IN

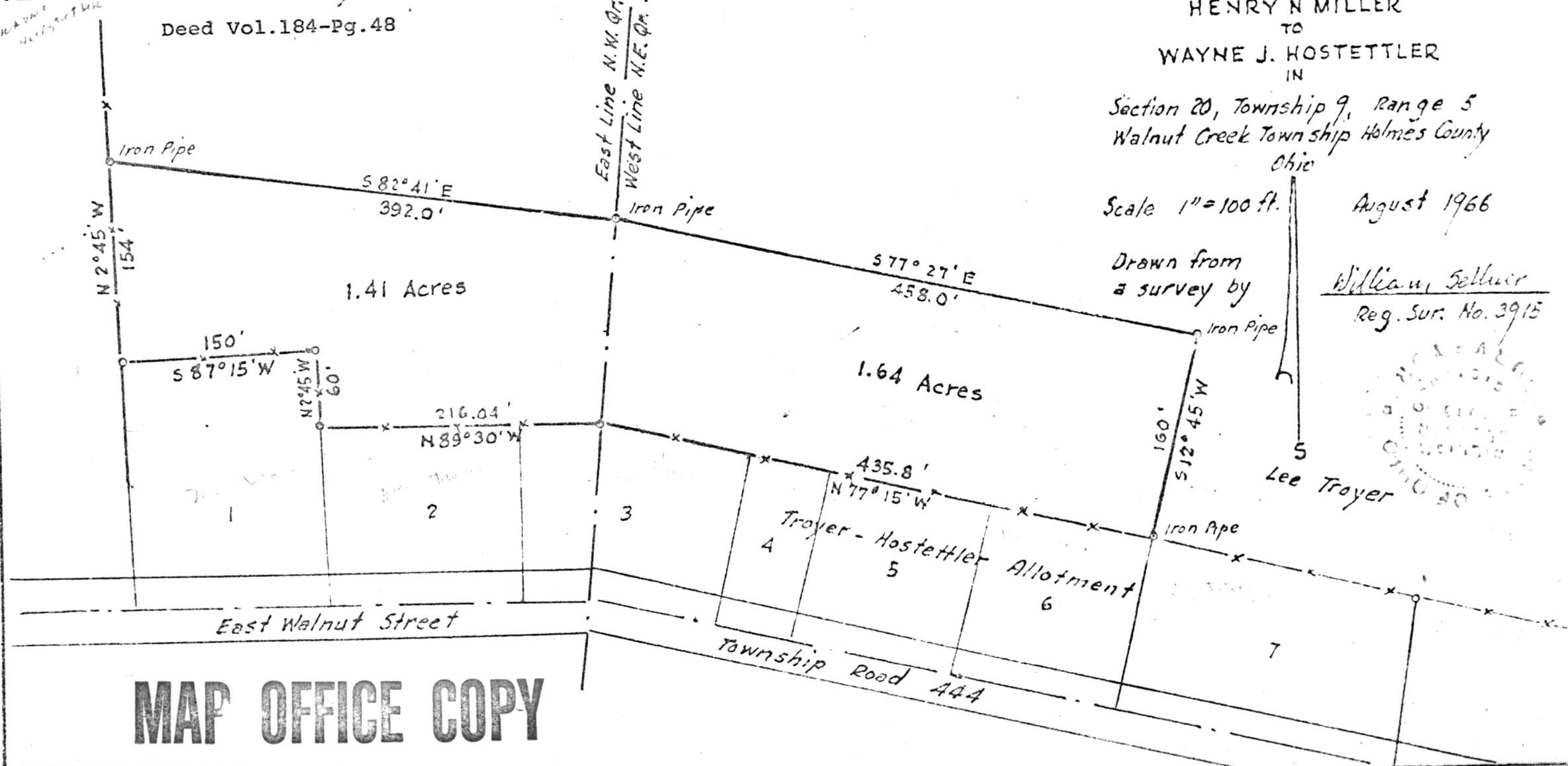
Section 20, Township 9, Range 5
Walnut Creek Township Holmes County
Ohio

Scale 1" = 100 ft.

August 1966

Drawn from
a survey by

William Sellner
Reg. Sur. No. 3915



MAP OFFICE COPY