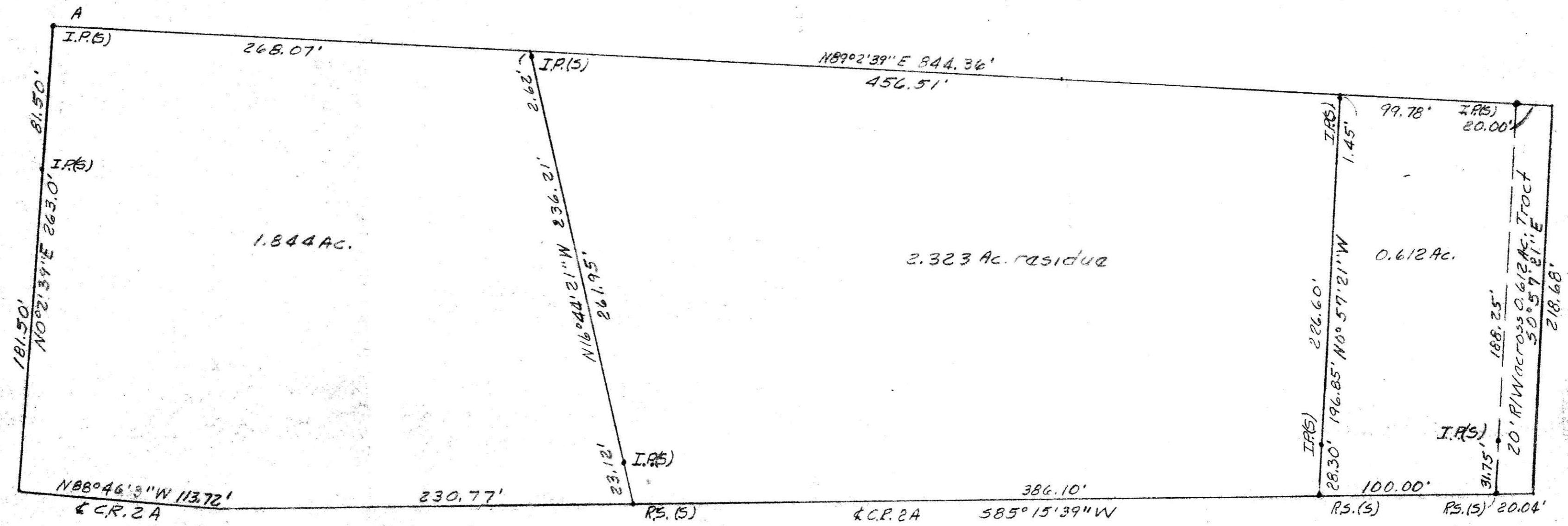
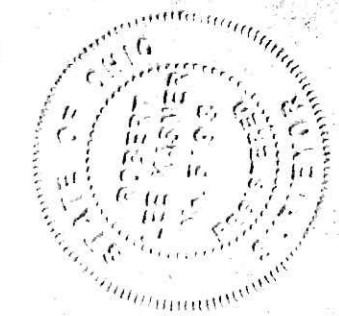


1006  
140  
860

From the NW cor of  
the SW 1/4 S11, T8N, R8W  
S89°48'33"E 909.48', S89°  
42'E 1095.4' + 50°2'39"W  
1143.66' to Point A

112141

REC'D: September 20 1977  
AT 2:13 O'CLOCK P.M.  
RECORDED: Sept. 23 1977  
HOLMES CO. Plat VOL. 6 PG. 149  
FEE: \$4.20  
Richard Haver RECORDER



Vol. 158 Pg. 231  
Scale: 1" = 50'

**MAP OFFICE COPY**

SUBDIVISION OF LANDS OF  
CHARLES E. & HILDA M. CHANEY  
Part of the NW Qtr. Sec. 11 Twp. 8 Range 8,  
Killbuck Township, County of Holmes and  
State of Ohio  
Robert Lee Kasner Reg. Surveyor # 5193