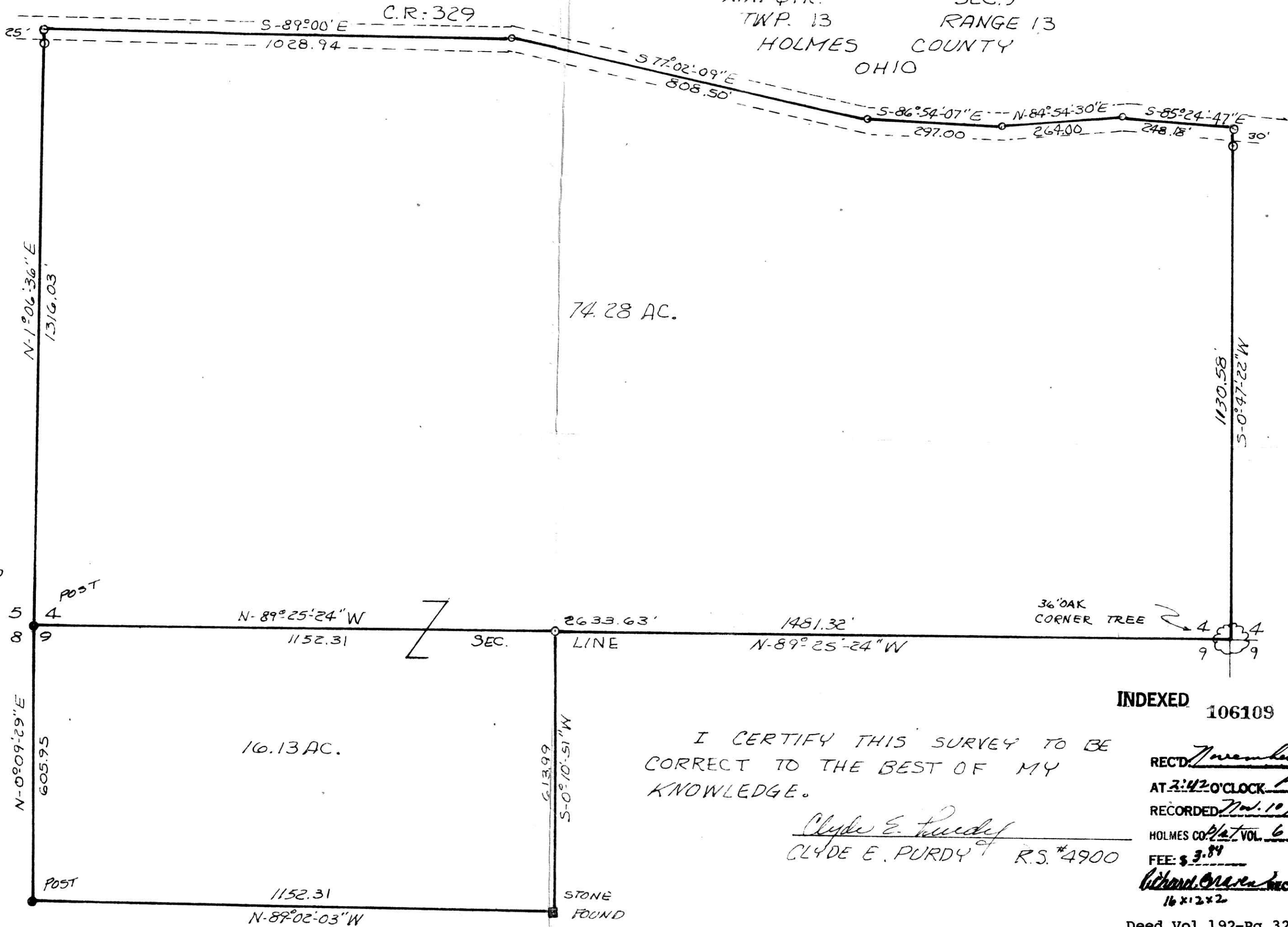


PRAIRIE TOWNSHIP
 S.W. QTR. SEC. 4
 N.W. QTR. SEC. 9
 TWP. 13 RANGE 13
 HOLMES COUNTY OHIO



74.28 AC.

16.13 AC.

SCALE 1"=200'
 O.I.P. SET
 ● POST
 ■ STONE FOUND

I CERTIFY THIS SURVEY TO BE
 CORRECT TO THE BEST OF MY
 KNOWLEDGE.

Clyde E. Purdy
 CLYDE E. PURDY R.S. #4900

INDEXED 106109

REC'D November 7, 1915
 AT 3:42 O'CLOCK P.M.
 RECORDED Nov. 10, 1915
 HOLMES CO. VOL. 6 PG. 31
 FEE: \$ 3.84
Richard Owen RECORDER
 16 x 12 x 2