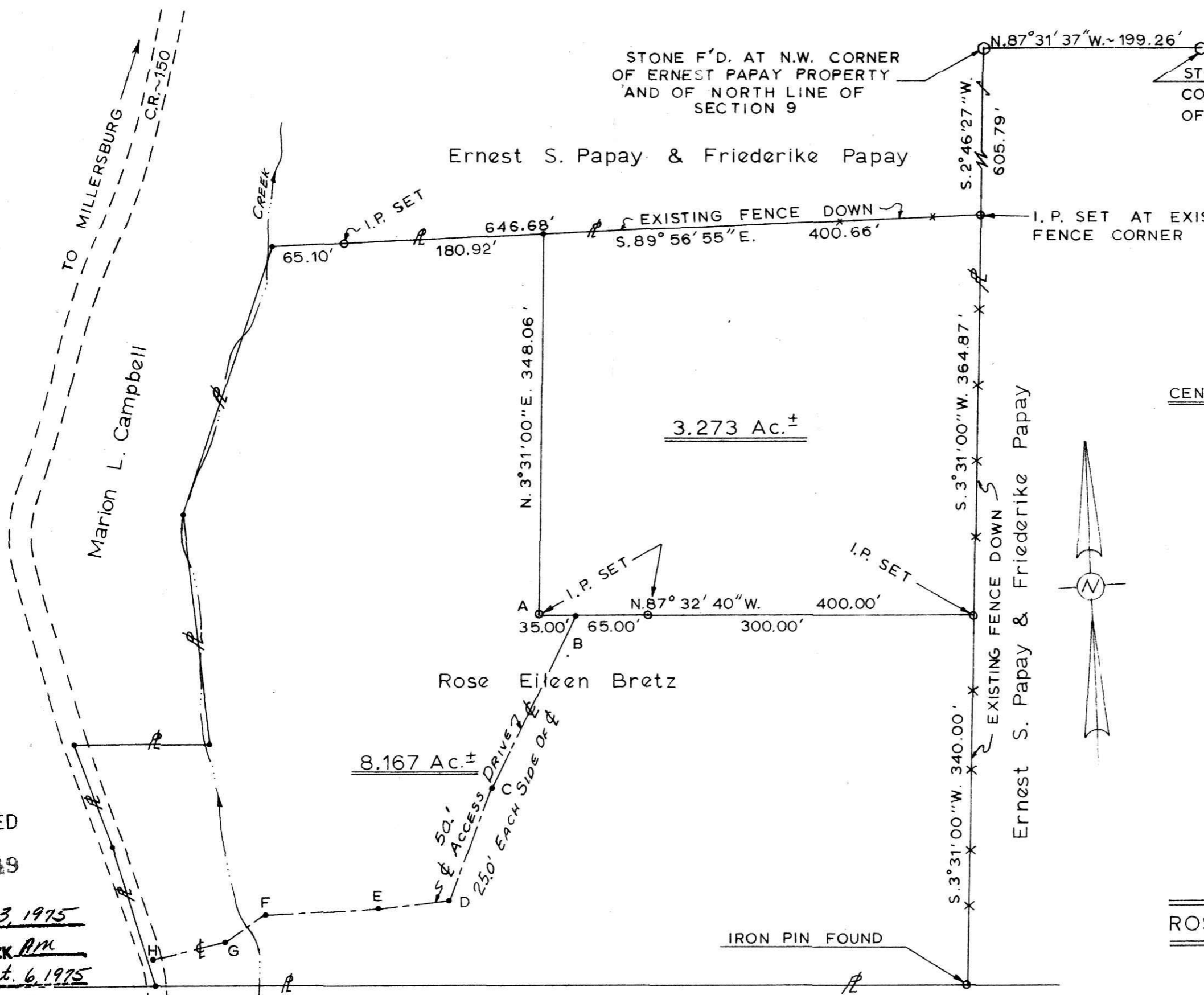


LOCATION MAP  
SCALE: 1" = 2000.0'



CENTERLINE OF ACCESS DRIVE EASEMENT ~ 16.0' WIDE

* A - B	S. 87° 32' 40" E.	35.00'
B - C	S. 28° 38' 00" W.	175.00'
C - D	S. 22° 38' 00" W.	110.00'
D - E	S. 86° 05' 00" W.	65.00'
E - F	S. 88° 51' 00" W.	102.00'
F - G	S. 61° 12' 00" W.	45.00'
G - H	S. 78° 18' 44" W.	67.51'

\* TIE TO PROPERTY CORNER.

ACREAGE TABLE

3.273 Ac.
8.167 Ac.
<u>TOTAL = 11.440 Ac.</u>

ROSE EILEEN BRETZ AND RICHARD BRETZ

PART OF N.E. QTR. OF NW. QTR. OF SECTION 9  
TOWNSHIP 8, RANGE 7, MECHANIC TOWNSHIP  
HOLMES COUNTY, OHIO

SCALE: 1" = 100'

DATE: SEPTEMBER ~ 1975

BUCKEYE LAND SURVEYING  
PHONE: 1-614-622-4210  
P.O. BOX 697 COSHOCTON, OHIO 43812

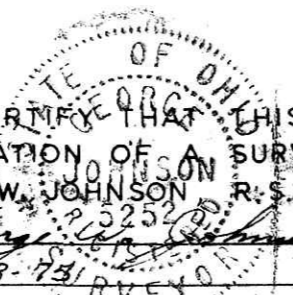
INDEXED  
105819

REC'D: Oct. 3, 1975  
AT 12:58 O'CLOCK PM  
RECORDED: Oct. 6, 1975  
HOLMES CO. Plat VOL. 6 PG. 75  
FEE: \$ 4.02  
Richard Straver RECORDER  
17 1/2 x 11 1/2

Deed Vol. 192-Pg. 42

**MAP OFFICE COPY**

I HEREBY CERTIFY THAT THIS PLAT IS A TRUE DELINEATION OF A SURVEY MADE BY GEORGE W. JOHNSON, R.S. # 5252.  
DATE: 9-8-75



Robert J. Jordan

IRON PIN FOUND