

96834 INDEXED

REC'D: Oct 18, 1922

AT 9:47 O'CLOCK AM

RECORDED: Oct 18, 1922

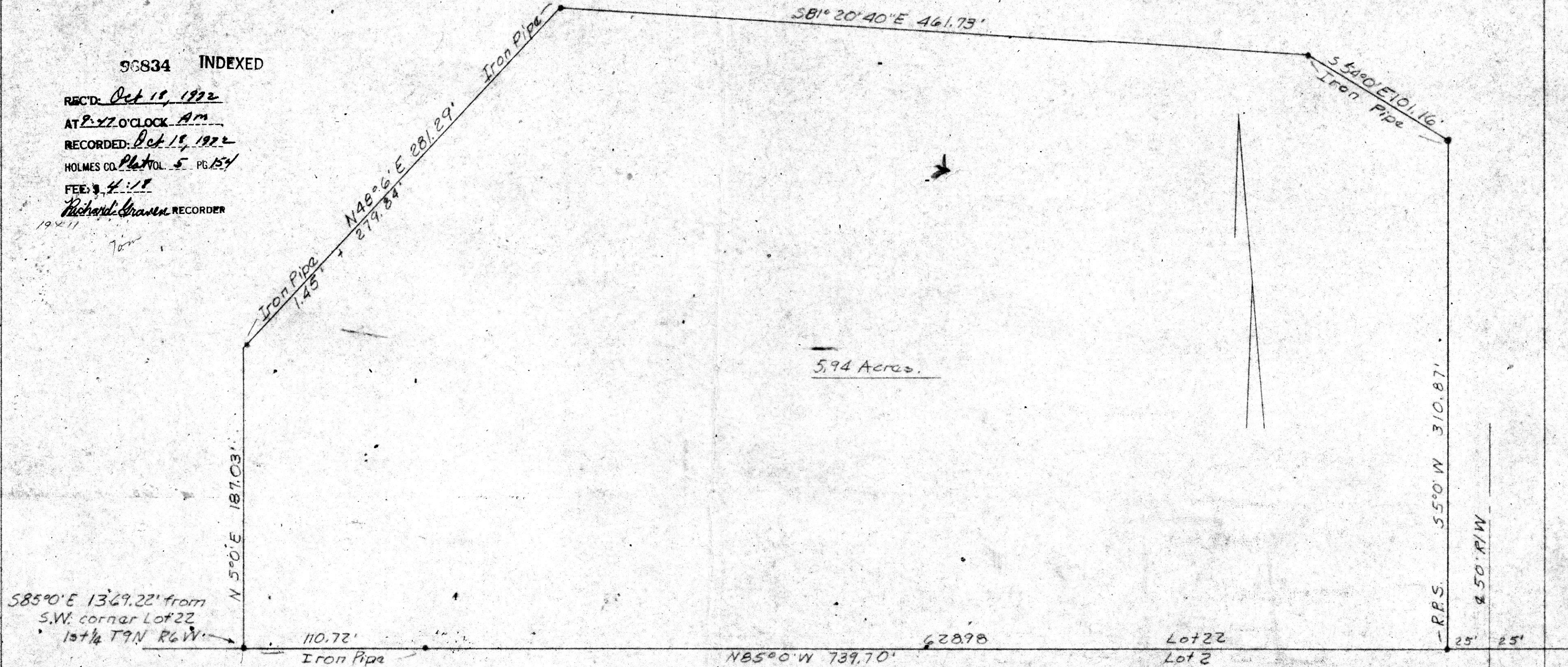
HOLMES CO. Plat VOL 5 PG 154

FEE \$ 4.18

Richard Strawn RECORDER

1922

Tom



5.94 Acres.

S 85° 0' E 1369.22' from  
S.W. corner Lot 22  
1st 1/4 T9N R6W

110.72'  
Iron Pipe

N 85° 0' W 739.70'

62898  
Lot 22  
Lot 2

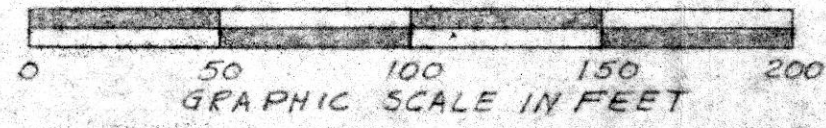
55° 0' W 310.87'  
R.R.S.

25' 25'  
450' R/W

55° 0' W 125.00'  
Radius

R = 225', Δ = 50° 30'  
Arc = 198.3'

± Old USR 62



PLAT OF A SURVEY OF  
 5.94 ACRE TRACT  
 Situated in Berlin Township, Holmes  
 County, State of Ohio, known as  
 part of Lot 22, 1st 1/4, T9N, R6W  
 Robert L. Kasnar, Registered Surveyor #5193