

REC'D: August 15, 1970

AT 11:30 O'CLOCK A.M.

RECORDED: Aug. 17, 1970

HOLMES CO. PLAT VOL. 5 PG. 42

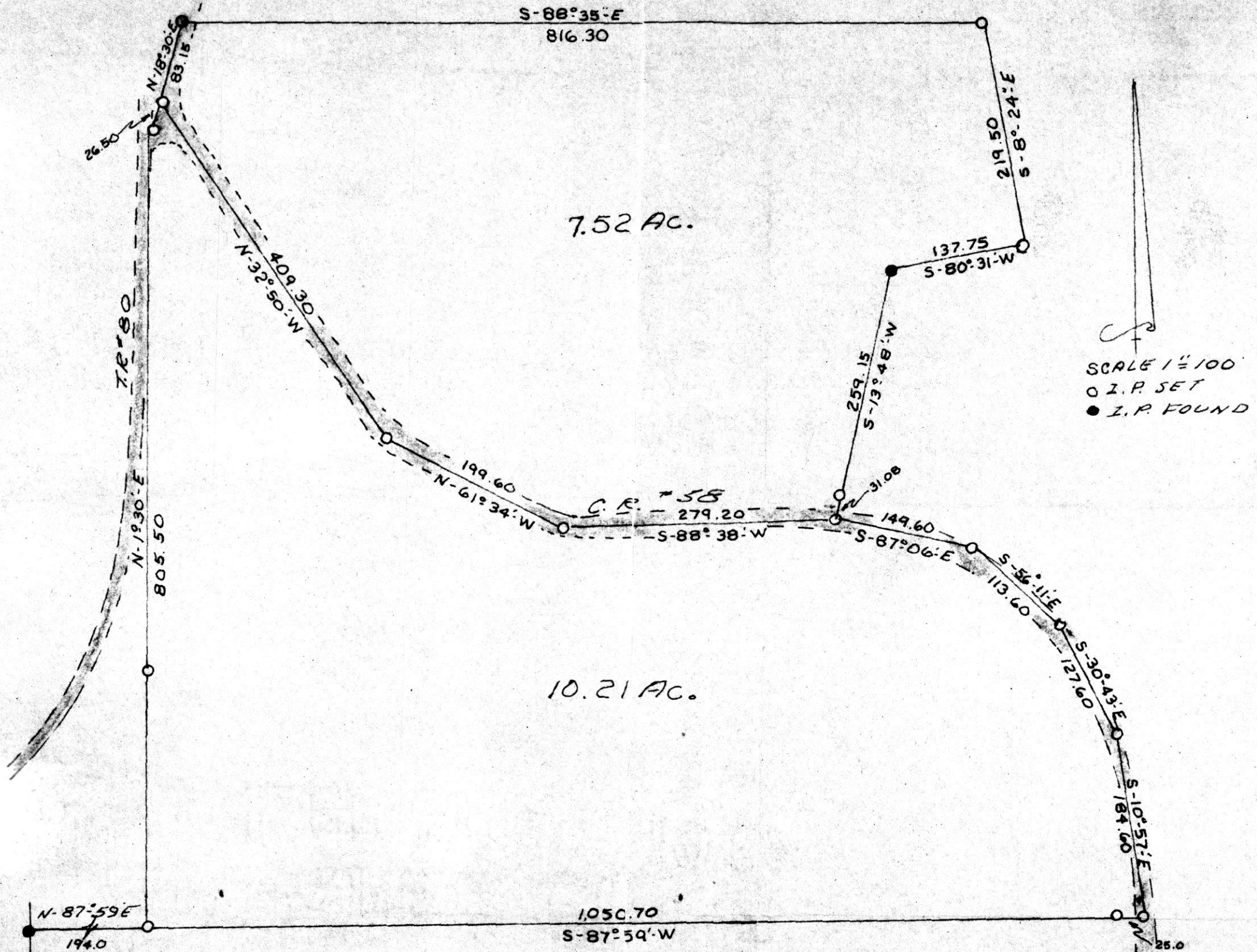
FEE: \$ 3.65

Richard Spradley RECORDER

89880

MECHANIC TOWNSHIP
N.E. QTR SEC. 1
TOWNSHIP 8 RANGE 7
HOLMES COUNTY
OHIO

AUG. 1970



S.W. COR.
N.E. QTR.
SEC. 1

I CERTIFY THIS SURVEY TO BE CORRECT
TO THE BEST OF MY KNOWLEDGE.

Clyde E. Purdy
Clyde E. Purdy R.S. 4900

S-89°30'-E
844.34'

2.28 AC.

PART LOT NO. 20
4TH QTR.
T-9 R-8

PART LOT NO 3
3RD QTR.
T-9 R-8

MONROE TOWNSHIP

PT. LOT NO. 3 3RD QTR.
PT. LOT NO. 20 4TH QTR.
TOWNSHIP 9 RANGE 8
HOLMES COUNTY
OHIO

July 1970

20.24 LOT 3
2.28 LOT 20
22.52 AC. TOTAL

N-0°44'E
1523.6'

N-1°00'E LOT LINE

8050'

T-R-55
S-20°00'W

SCALE 1" = 200'

Q.I.P. set

764.80

S-77°49'E
670.43

RES.

PT. LOT NO. 20
4TH QTR.
T-9 R-8

6.00 A.

3.22 Ac.

S.E. COR. LOT NO. 3
3RD QTR

575.12

303.15'

311.15

N-102°38'E
432.50

319.57

447.0'
S102°38'W

N-89°30'W
T.R.-286
89931

N-68°35'W

N-75°20'W
T.R.-286

609.20

747.90
N-1°00'E

S.W. COR. LOT NO. 20
4TH QTR.

I CERTIFY THIS SURVEY
TO BE CORRECT TO THE BEST
OF MY KNOWLEDGE.

Clyde E. Perry
Clyde E. Perry, P.S. #4490

REC'D: August 24, 1970

AT 11/16 O'CLOCK a.m.

RECORDED: Aug. 24, 1970

HOLMES CO. Vol. 5 PG. 59

FEE: \$ 2.00

Richard Brown RECORDER