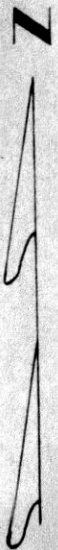


MADE FOR
 ETHEL BURKEY
 R.D. 1
 MILLERSBURG OHIO

HARDY TOWNSHIP
 SE QTR SECTION 13
 TWP 9 RANGE 7
 HOLMES COUNTY, OHIO

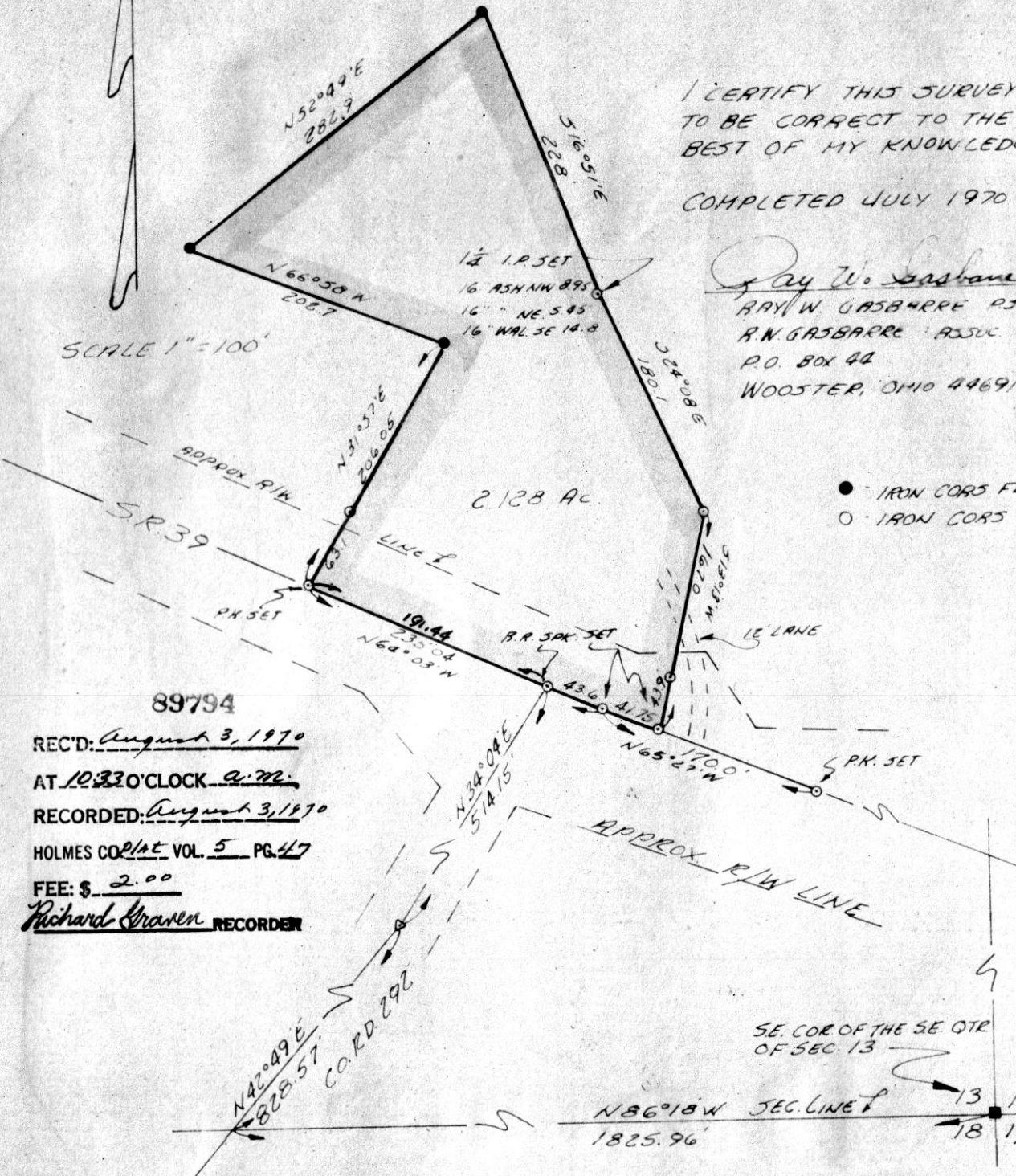


I CERTIFY THIS SURVEY
 TO BE CORRECT TO THE
 BEST OF MY KNOWLEDGE.

COMPLETED JULY 1970

Ray W. Gasbarré
 RAY W. GASBARRÉ AS AISE
 R.W. GASBARRÉ ASSOC.
 P.O. BOX 44
 WOOSTER, OHIO 44691

SCALE 1" = 100'



89794
 REC'D: August 3, 1970
 AT 10:33 O'CLOCK a.m.
 RECORDED: August 3, 1970
 HOLMES CO. PLAT VOL. 5 PG. 47
 FEE: \$ 2.00
Richard Straven RECORDER

N 86° 18' W SEC. LINE 1
 1825.96

N 1° 30' E 89 perches 12 links
from SE corner NW ¼ Sec. 10, T 8 N, R 5 W, Vol. 173 Pg. 605

Co. Rd. 70

N 88° 50' W 245.46

Iron Pin N 0° 42' W 200.00' Iron Pin
18.51'
6.60' 174.89'

0.92 Ac. Part of Prev. Conv.
Vol. 173 Pg. 605, including about
24 sq. rods as called out for
school house purposes.

215.28'
S 73° 51' W 247.45'

3217' Iron Pin

N 1° 30' E 192.45'
Twp. Rd. # 137



GRAPHIC SCALE IN FEET

See Deed Record: Vol. , Pg.

PLAT OF A SURVEY FOR
CLARA MULLET

Situated in Clark Township, Holmes
Co., Ohio, known as part of the
NW. Qtr. Sec. 10, Twp. 8 North, and
Range 5 West.

Robert L. Kasner, Reg. Surveyor #5193

7/9/70

89820

REC'D: August 8, 1970

AT 11:10 O'CLOCK A.M.

RECORDED: August 19, 1970

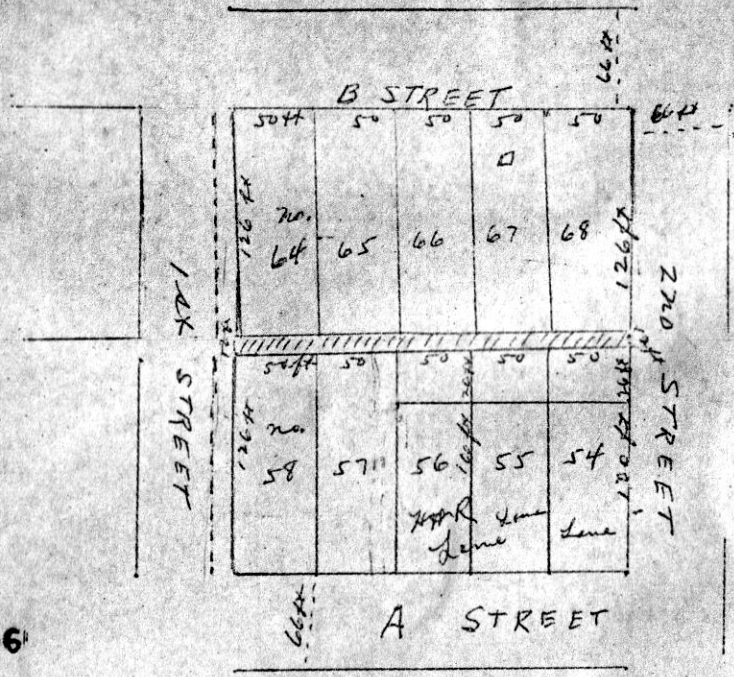
HOLMES CO. PLAT VOL. 5 PG. 47

FEE: \$2.00

Richard Krause RECORDER



NORTH



89806

REC'D: August 5, 1970
 AT 11:01 O'CLOCK A.M.
 RECORDED: Aug 6, 1970
 HOLMES CO. PLAT VOL 5 PG. 47

FEE: \$ 2.00
 Richard Graves RECORDER

5
 PLAT TAKEN FROM MAP OF

HOLMESVILLE, OHIO - APRIL - 1946

Certified Correct

Karl Snyder
 License 182

MAST



89837

REC'D: August 11, 1970

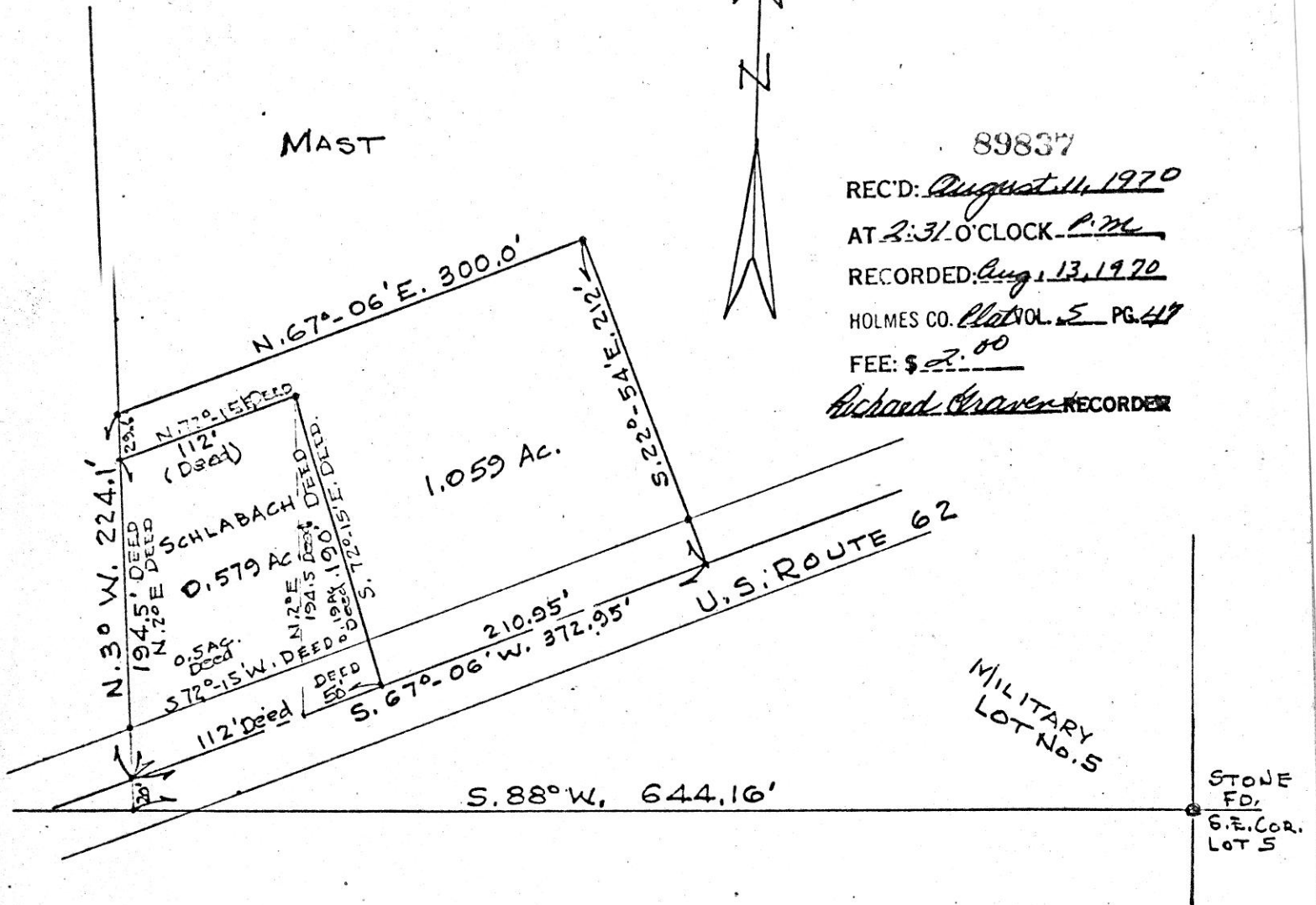
AT 2:31 O'CLOCK P.M.

RECORDED: Aug. 13, 1970

HOLMES CO. Plat Vol. 5 PG. 47

FEE: \$ 2.00

Richard Craven RECORDER



PLAT OF A SURVEY OF A PART OF
 LOT No. 5; FOURTH QUARTER; TWP. 10
 RANGE 5, MILITARY LANDS, PAINT TOWNSHIP,
 HOLMES COUNTY, OHIO FOR JACOB MAST.

SCALE - 1" = 100'

JULY 11, 1970

RC. SCHNEIDER, #4177 & R.H. HUNSINGER, #3685
 REGISTERED SURVEYORS.

