

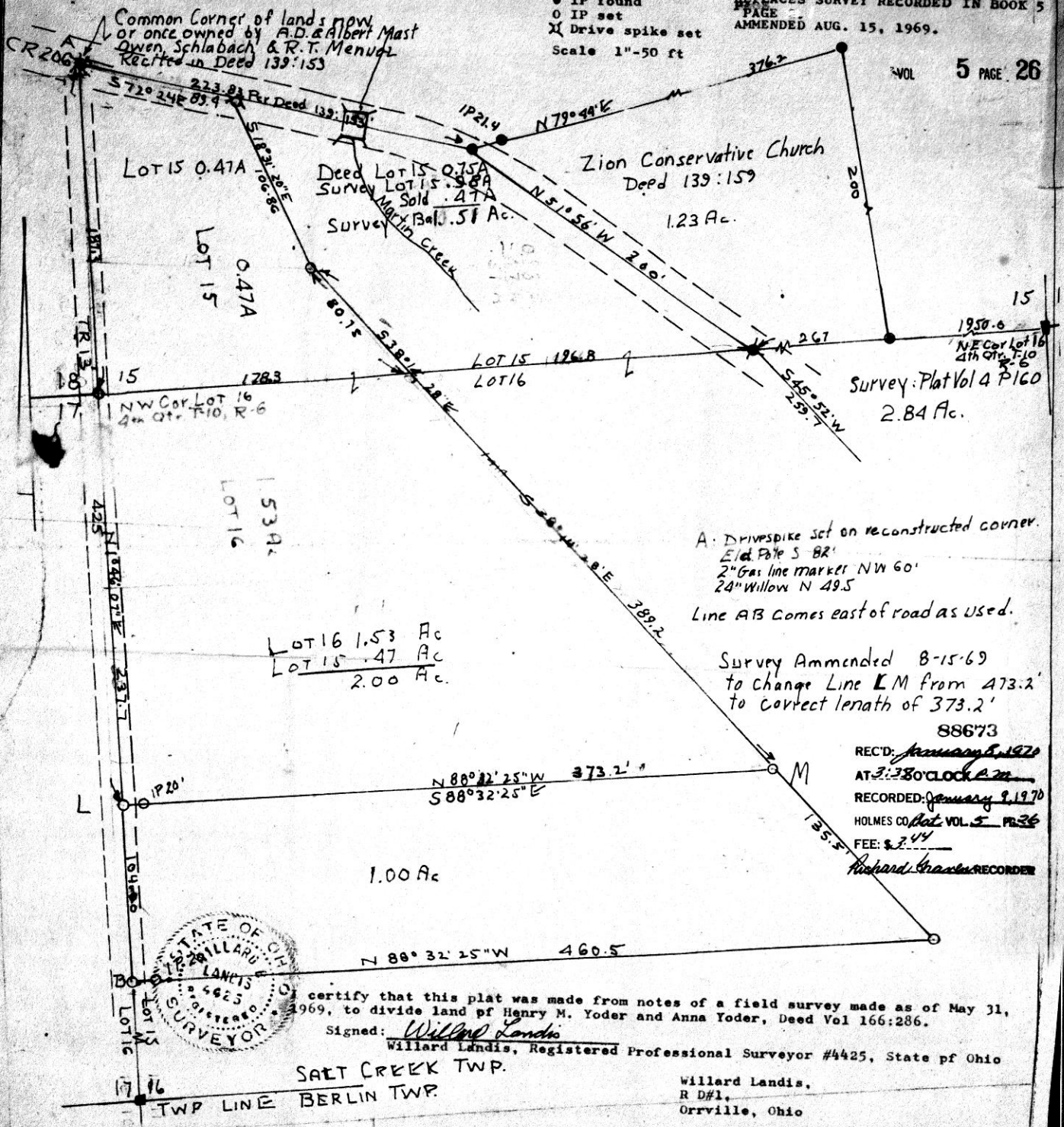
SALT CREEK TOWNSHIP--HOLMES COUNTY

PART OF LOTS 15 and 16, T-10, 4th QUARTER, R-6, US MILITARY LANDS

THIS AMENDED SURVEY CANCELS AND REPLACES SURVEY RECORDED IN BOOK 5 PAGE 26
 AMENDED AUG. 15, 1969.

- IP found
 - IP set
 - ⊗ Drive spike set
- Scale 1"=50 ft

VOL 5 PAGE 26



Common Corner of lands now or once owned by A.D. & Albert Mast Owen, Schlabach & R.T. Mennel Recited in Deed 139:153

Zion Conservative Church Deed 139:159 1.23 Ac.

Survey: Plat Vol 4 P 60 2.84 Ac.

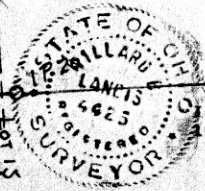
LOT 16 1.53 Ac
 LOT 15 .47 Ac
 2.00 Ac.

A. Drivespike set on reconstructed corner.
 E 1/4 P 16 S BR'
 2" Gas line marker NW 60'
 24" Willow N 49.5'

Line AB Comes east of road as used.

Survey Amended 8-15-69 to change Line LM from 473.2' to correct length of 373.2'

88673
 REC'D: January 8, 1970
 AT 3:30 O'CLOCK P.M.
 RECORDED: January 9, 1970
 HOLMES CO. Vol. 5 P. 26
 FEE: \$ 7.44
 Richard Granger RECORDER



I certify that this plat was made from notes of a field survey made as of May 31, 1969, to divide land of Henry M. Yoder and Anna Yoder, Deed Vol 166:286.

Signed: Willard Landis
 Willard Landis, Registered Professional Surveyor #4425, State of Ohio

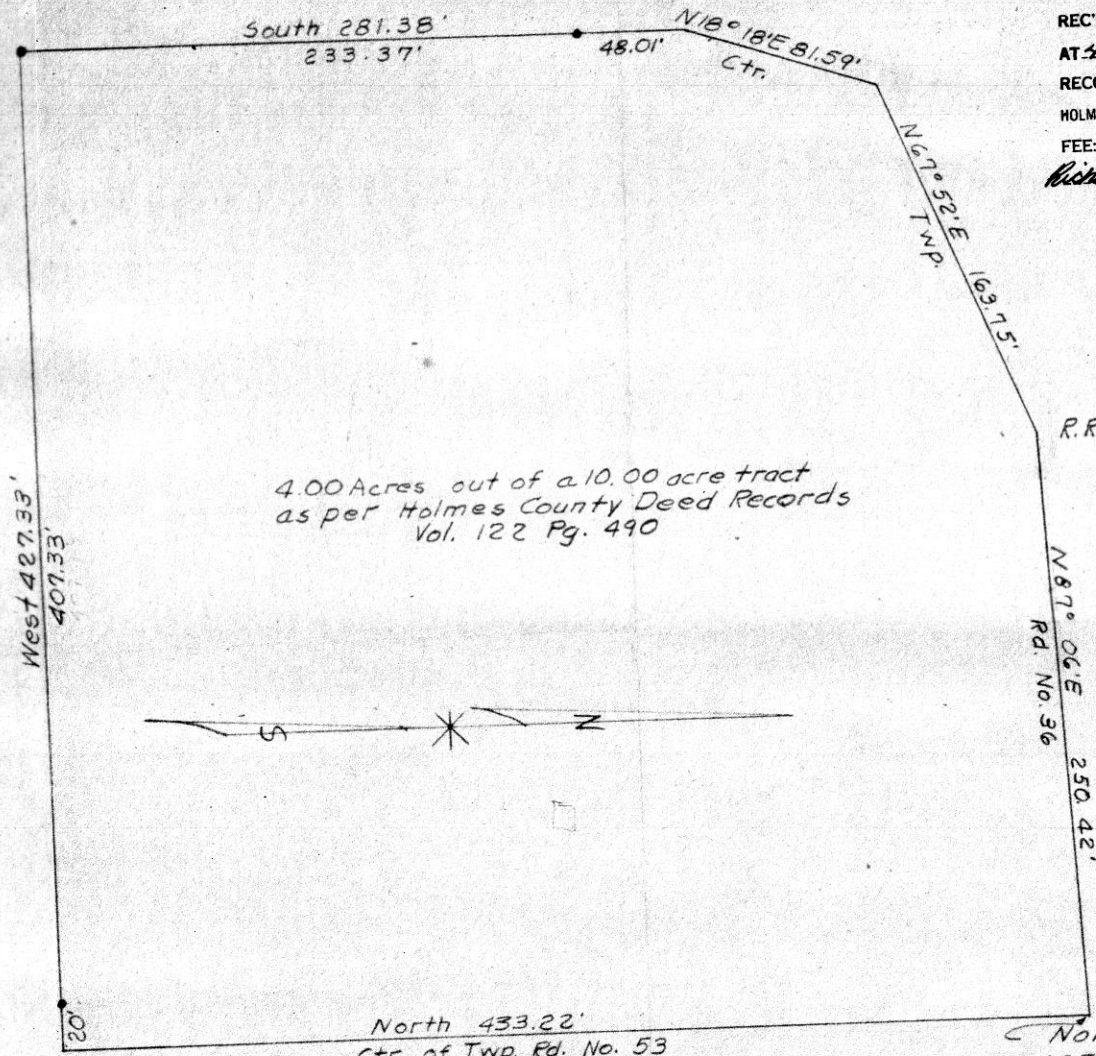
SALT CREEK TWP.
 TWP LINE BERLIN TWP.

Willard Landis,
 R D#1,
 Orrville, Ohio

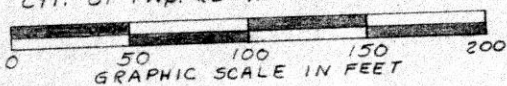
12 1/4 X 14

88709

REC'D: January 15, 1970
AT 4:18 O'CLOCK P.M.
RECORDED: January 19, 1970
HOLMES CO. Plat VOL. 5 PG. 26
FEE: \$ 5.40
Richard C. Owen RECORDER



4.00 Acres out of a 10.00 acre tract
as per Holmes County Deed Records
Vol. 122 Pg. 490



R.R. Spike
Northeast corner
as per above reference.

PLAT OF A SURVEY FOR
ETHEL SNOW
Known as part of the Southeast
Quarter of Section 21, Township 8,
and Range 8, Killbuck Township
Holmes County, Ohio.
Robert L. Kasner
Registered Surveyor 5193

10/8/69



13713

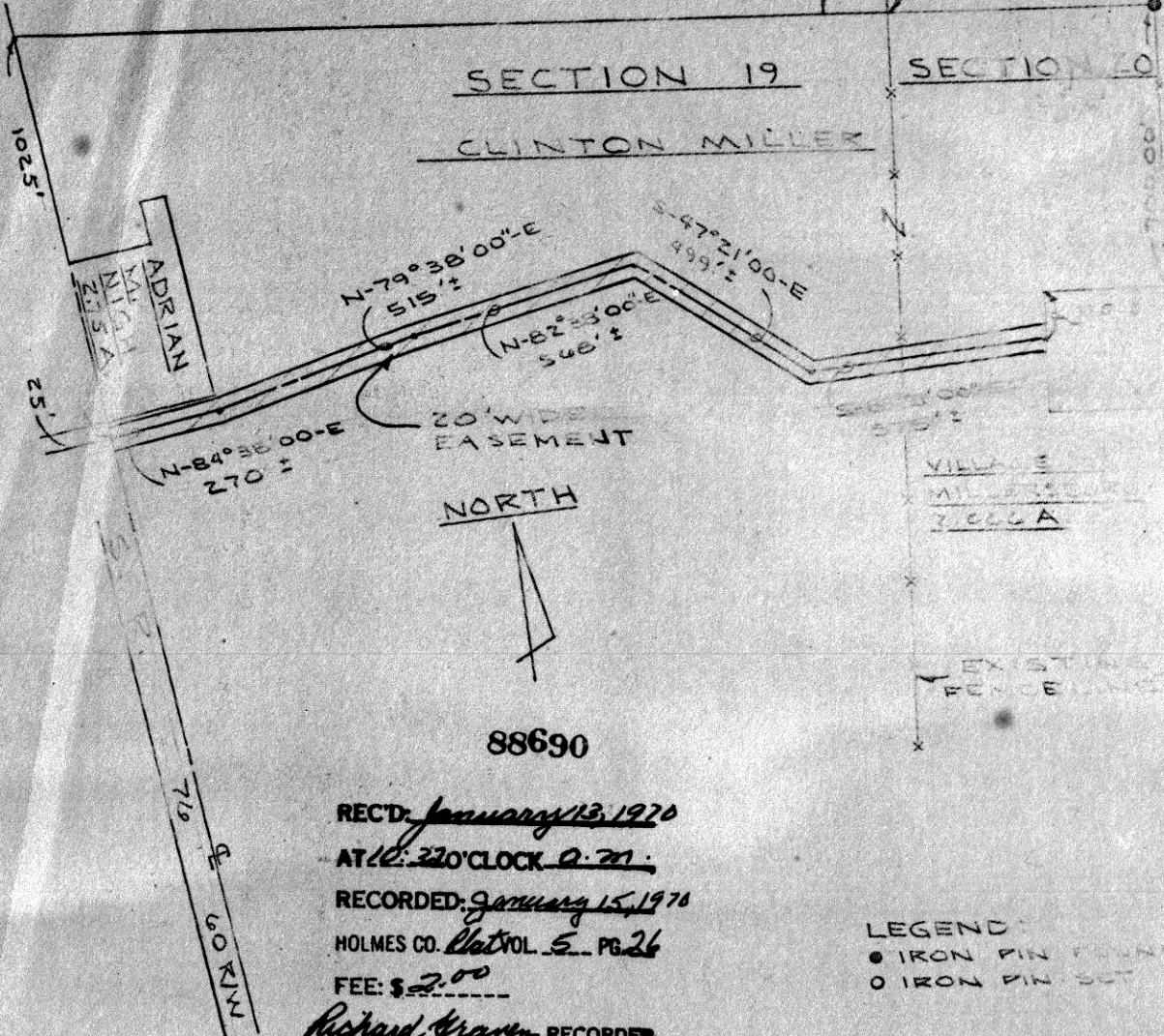
VILLAGE OF MILLERSBURG CORPORATION LINE

N.W. CORNER OF S.W. 1/4 SECT. 20

SECTION 19

SECTION 20

CLINTON MILLER



NORTH

88690

REC'D: *January 13, 1970*

AT 10:20 O'CLOCK A.M.

RECORDED: *January 15, 1970*

HOLMES CO. Plat VOL. 5, PG. 26

FEE: \$ *2.00*

Richard Craven - RECORDER

LEGEND

- IRON PIN FOUND
- IRON PIN SET

PLAT OF EASEMENT
FOR THE VILLAGE OF MILLERSBURG
 PART OF S.E. 1/4 SECT. 20 & PART S.W. 1/4 SECT. 19
 HARDY TOWNSHIP HOLMES COUNTY OH

DRAWN	RAIKE ENGINEERS George W. Raika, Inc. Consulting Engineers 2145 Claremont Ave., Ashland, Ohio
APPROVED DATE	
FIELD BOOK ZZ	

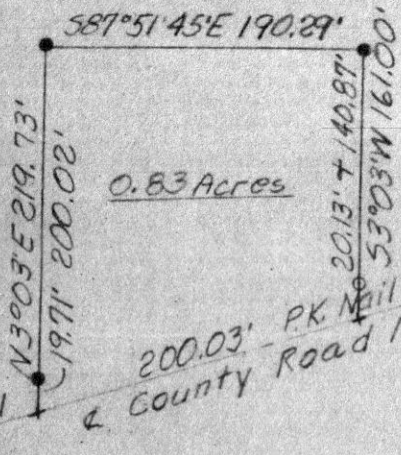
587°0'E 1335.0' Vol. 130 Pg. 165 N. Line S. 14, T8, R7

Stone at N.W. corner N.E. 1/4 S14, T8, R7.

Lands of Oscar Middaugh

88747

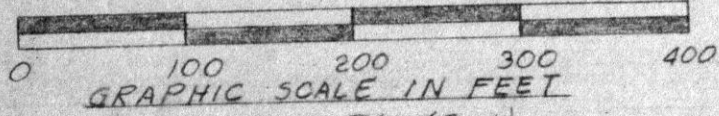
REC'D: January 20, 1970
AT 2:52 O'CLOCK PM
RECORDED: January 21, 1970
HOLMES CO. Plat VOL. 5 PG. 26
FEE: \$2.00
Richard Grant RECORDER



53°0'W 878.0' Vol. 130 Pg. 165

159.635' E corner
1.0 Ac. Tract P.B. 4, Pg. 55

200.03' PK Nail
County Road No. 35
155.66' PK Nail
575°04'W PK Nail



• Denotes Iron Pin (Set)
○ Denotes Iron Pin (Previous Survey)



PLAT OF A SURVEY FOR OSCAR MIDDAUGH

Situated in Killbuck Township, Holmes County, and State of Ohio. Known as part of the Northeast Quarter of Section 14, Township 8, and Range 7.
Robert Lee Kasner, Registered Surveyor No. 5193
12/9/69