

87017

REC'D. March 10, 1969

AT 2:35 O'CLOCK P.M.

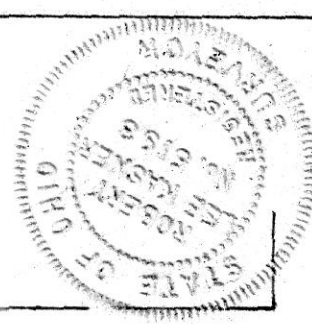
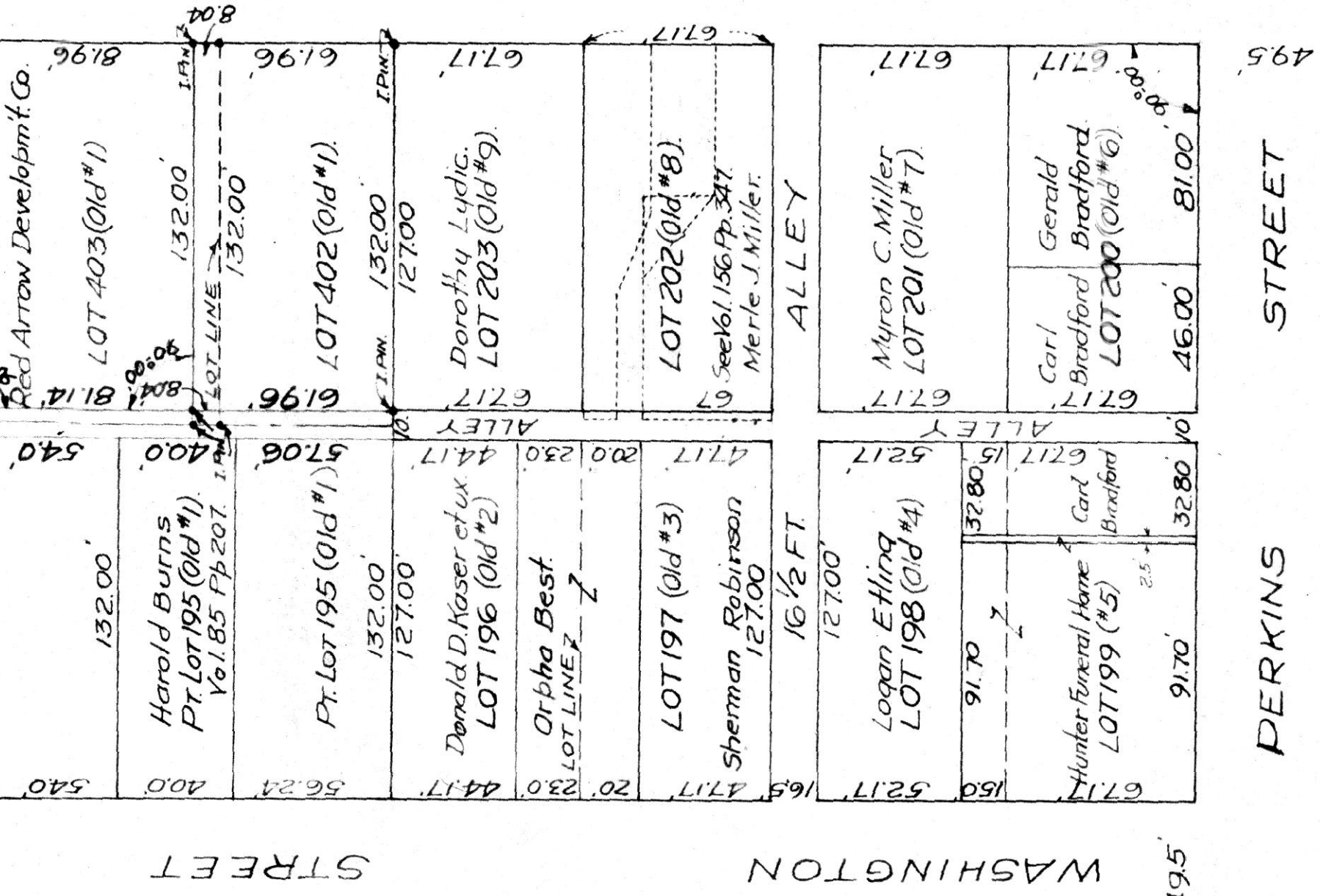
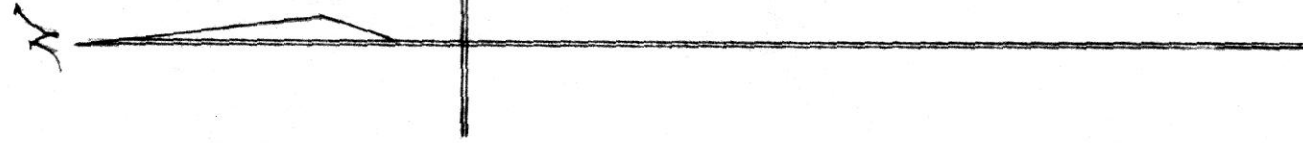
RECORDED. March 11, 1969

HOLMES CO. Plat VOL. 5, PG. 125

SEE: \$1.87

Richard Strawn RECORDER

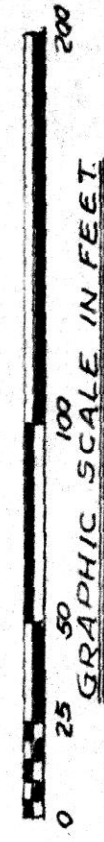
SOUTH LINE 0.10 # SOUTH LINE OF ADAM JOHNSON'S SUBDIVISION OF OUT LOTS TO MILLERSBURG
NORTH LINE OF JOHNSON & MILLER'S 2ND. ADDITION.



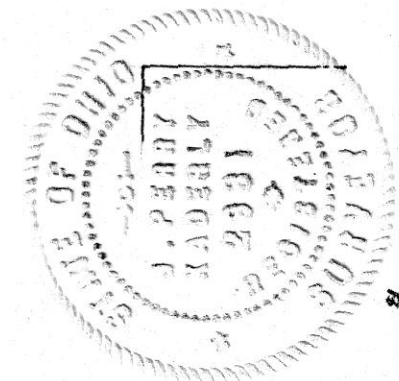
Corner Stone 7 West of Lot Corner.

PERKINS STREET
CLAY STREET
MILLERSBURG

SURVEY FOR RED ARROW DEVELOPMENT CO'Y MILLERSBURG, OHIO.



Robert L. Kasner, Reg'd. Surveyor #5193
J. Perry Kaderly, Reg'd. Surveyor #2931
New Philadelphia, O. Feb. 27, 1969.



REFERENCE AND NOTES.
SURVEYOR'S PLAT BOOK VOL. 5 PP 186.
JOHNSON & MILLER'S PLAT OF THEIR
SECOND ADDITION (DEED RECORD
VOL. 4 PP 315, 1837) GAVE LOT SIZE FOR
LOTS - OLD NOS. 2, 3, 4, 5, 6, 7, 8 & 9 IN ACRES
AND THE NORTH-SOUTH ALLEY WAS 25 LINKS
(16 1/2 FT.) WIDE. ON OR ABOUT 1860 A RESURVEY
WAS MADE, AT WHICH TIME THE ABOVE LOTS
WERE EACH MADE 67'-2" (67.17 FT) WIDE AND
127.0 FT. IN DEPTH. THE STREET FRONTAGE
FOR LOT 1 (195-402-#403) WAS MADE 148.5 FT.
(7 POLES) ON EACH STREET. THE LENGTHS AS
SHOWN WERE CALCULATED FROM THE SPREAD
AS SHOWN ON IRVINE & ENOS 2ND. ADDITION
RECORDED IN PLAT BOOK VOL. 1 PP 19 (AUG. 12, 1854). J.P.K.