

8667.5

REC'D: December 16-1968

AT 1:45 O'CLOCK P.M.

RECORDED: Dec. 16-1968

HOLMES CO. Plat VOL 4 PG 187

FEE: \$ 1.

Evelyn Anderson RECORDER



86630

VOL 4 PAGE 187

REC'D: December 17-1968

AT 10:20 O'CLOCK A.M.

RECORDED: Dec. 18, 1968

HOLMES CO. PLAT VOL. 4 PG. 187

VILLAGE OF HOLMESVILLE
LOTS 126 : 127
HOLMES COUNTY, OHIO

MADE FOR
BUCKEYE OIL
BOX 85
HOLMESVILLE, OHIO

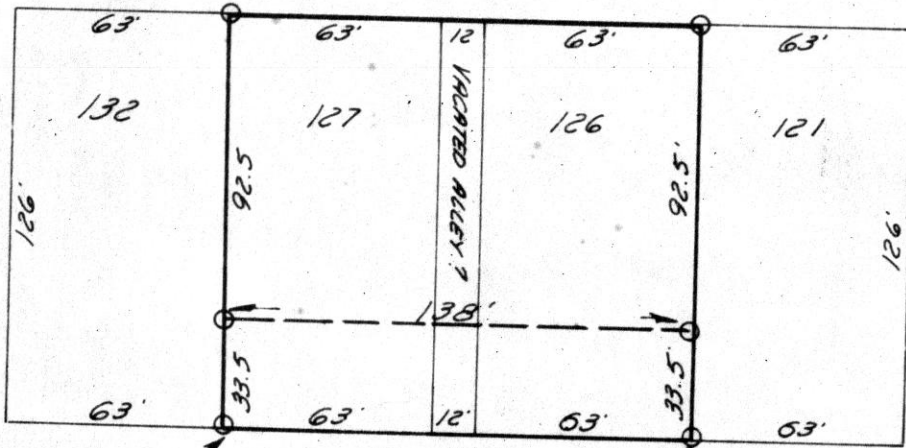
FEE: \$ 1.00

REF: DEED VOL. 1 Pg. 3

Evelyn Anderson RECORDER

MAIN ST. 66'

ERIE ST. 60'



O IRON CORNS SET
FENCE 2' W

O IRON CORNS SET
FENCE 8' W

O IRON CORNS SET

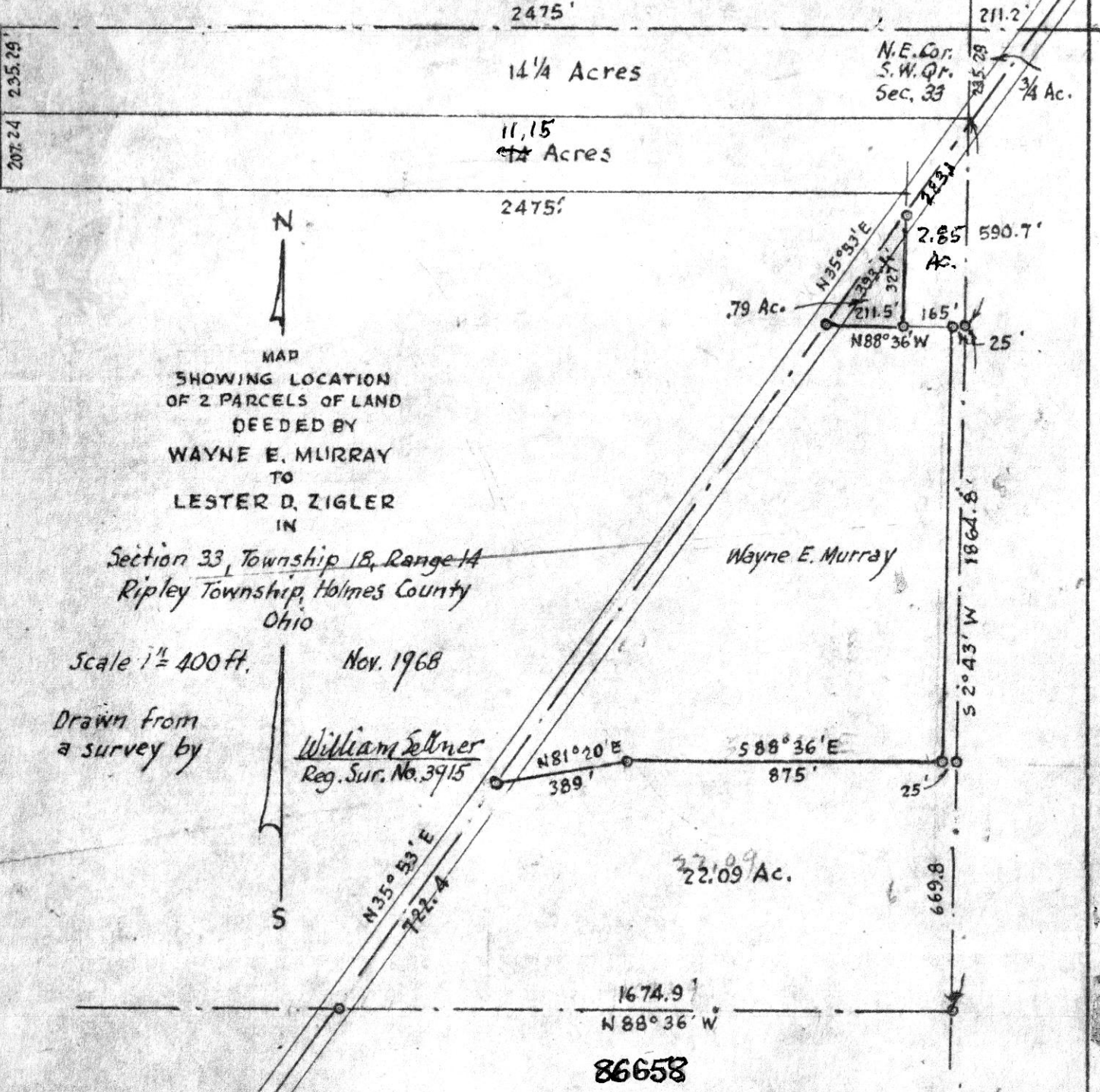
SCALE 1" = 50'

I CERTIFY THIS SURVEY TO BE CORRECT TO THE
BEST OF MY KNOWLEDGE.

COMPLETED 11-19-68

Ray W. Gasbarre
RAY W. GASBARRE P.S. 4153
R.W. GASBARRE & ASSOC.
P.O. BOX 44
WOOSTER, OHIO





MAP
SHOWING LOCATION
OF 2 PARCELS OF LAND
DEEDED BY
WAYNE E. MURRAY
TO
LESTER D. ZIGLER
IN

Section 33, Township 18, Range 14
Ripley Township, Holmes County
Ohio

Scale 1" = 400 ft.

Nov. 1968

William Seltner
Reg. Sur. No. 3915

Drawn from
a survey by

REC'D: December 23-1968
AT 11:25 O'CLOCK A.M.
RECORDED December 27-1968
HOLMES CO. PLAT VOL. 4 PG. 187
FEE: \$1.00
Evelyn Anderson, RECORDER
By: D.A.

