

80677

OAK GROVE ALLOTMENT No 2

S.W. Quarter Section 25. Twp 20 (Washington) Range 15. Holmes County, Ohio.

KNOW all men by these present that we the undersigned have caused the lots shown to be surveyed and platted.

WITNESS our hands this 9th day of August 1965.

Owners
Morton Reed
Betty N. Reed
Cyril A. Starr
Quella H. Starr

Witnesses
Charles W. King
Charles W. King
Sandra K. Hawkins
Sandra K. Hawkins

State of Ohio } S.S.
County of Wayne }

BEFORE ME Sandra K. Hawkins a notary public in said county and state, personally appeared Morton Reed, Betty N. Reed, Cyril A. Starr, Quella H. Starr and acknowledged that they did sign the foregoing and that the same is their free act and deed.

In testimony whereof I hereby set my hand and seal this 9th day of August 1965.

Sandra K. Hawkins 7-22-70
Notary Public My Comm. exp.



Approved this 5th day of February 1966. Holmes County Health Department.
By C. J. ...

Approved this 14th day of February 1966. Holmes County Commissioners.
Signed Warren ... signed Cliff Maxwell signed ...

Received for transfer this ... day of ... 1965. Holmes County Taxmap office.
By ...

Received for transfer this 14 day of February 1966. Holmes County Auditor's office.
By Vera ...

Received for recording this 7th day of April 1966. Holmes County Recorder's office.
RECORDED: April 7-1966 at 10:50 A.M. By Evelyn Anderson Recorder.
Recorded in Plat Book 4 Page 89
FEE: 3.57

I certify this plat, prepared from field survey, to be correct to the best of my knowledge.

Completed Aug. 2nd 1965
Ray W. Gasbarre
Ray W. Gasbarre R.S. 4153
Engineering Assoc.
P.O. Box 157, Wooster, Ohio

- Iron cans found
- Iron cans set

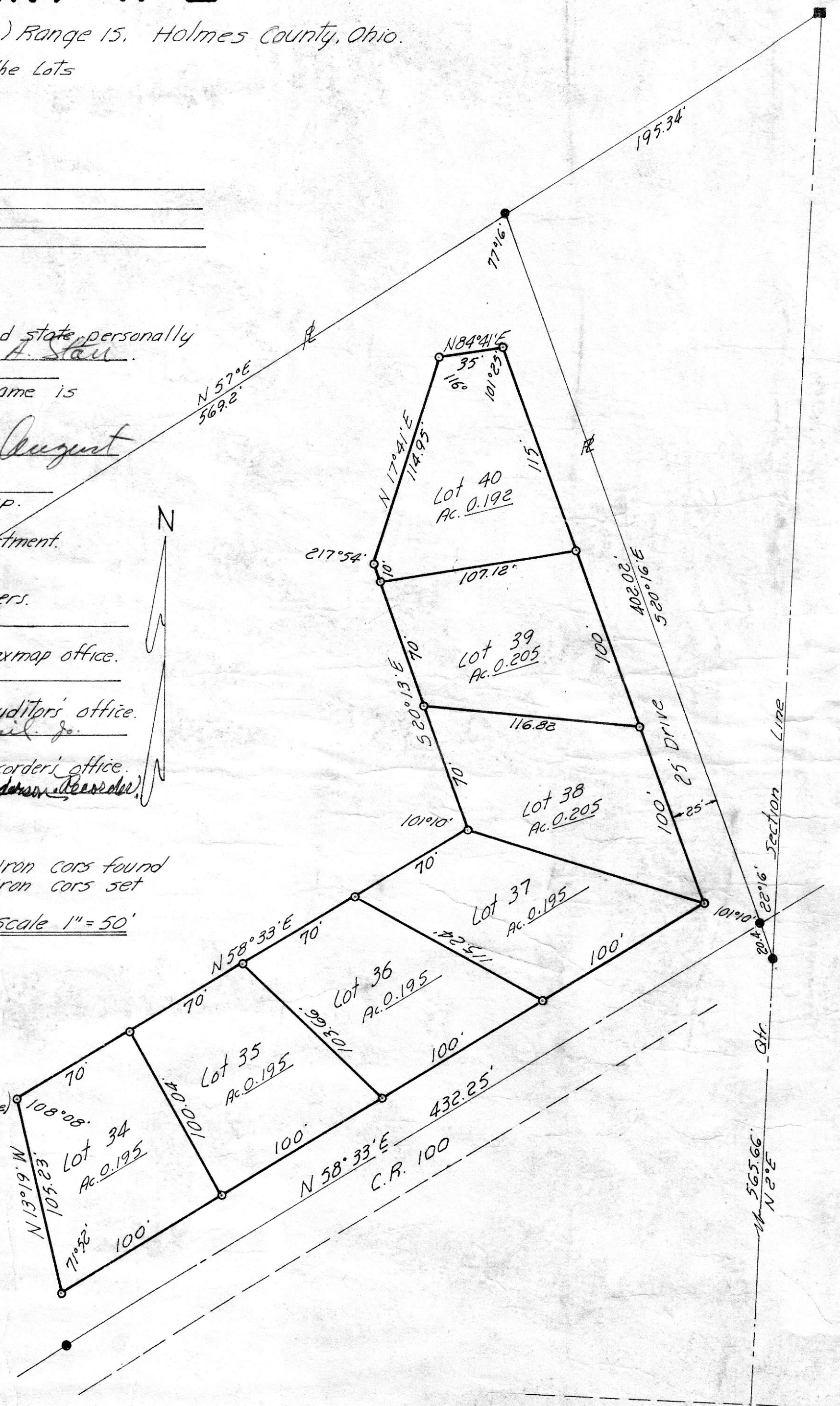
Scale 1" = 50'

5.898 Ac. (See Vol 2, Pg 122 for previous acreage)
- 1.382 Ac. in Lots 34 through 40
4.516 Ac. balance

NOTATION:

FOR RESTRICTIONS - OAK GROVE DEVELOPMENT #2
AND ALL REMAINING DEVELOPMENTS IN THE ORIGINAL
REED AND STARR PROPERTY - SEE DEED VOL. 162 - PAGE 383

NOTATION RECORDED - MAY 12, 1967
EVELYN ANDERSON - RECORDER



T.R. 2 Section 25 25 Line
36 36