

79429

REC'D: August 31, 1965

AT 10:26 O'CLOCK A.M.

RECORDED: August 31, 1965

HOLMES CO. PLAT VOL. 4 PG. 9

FEES: \$ 1.07

*Evelyn Anderson*  
RECORDER

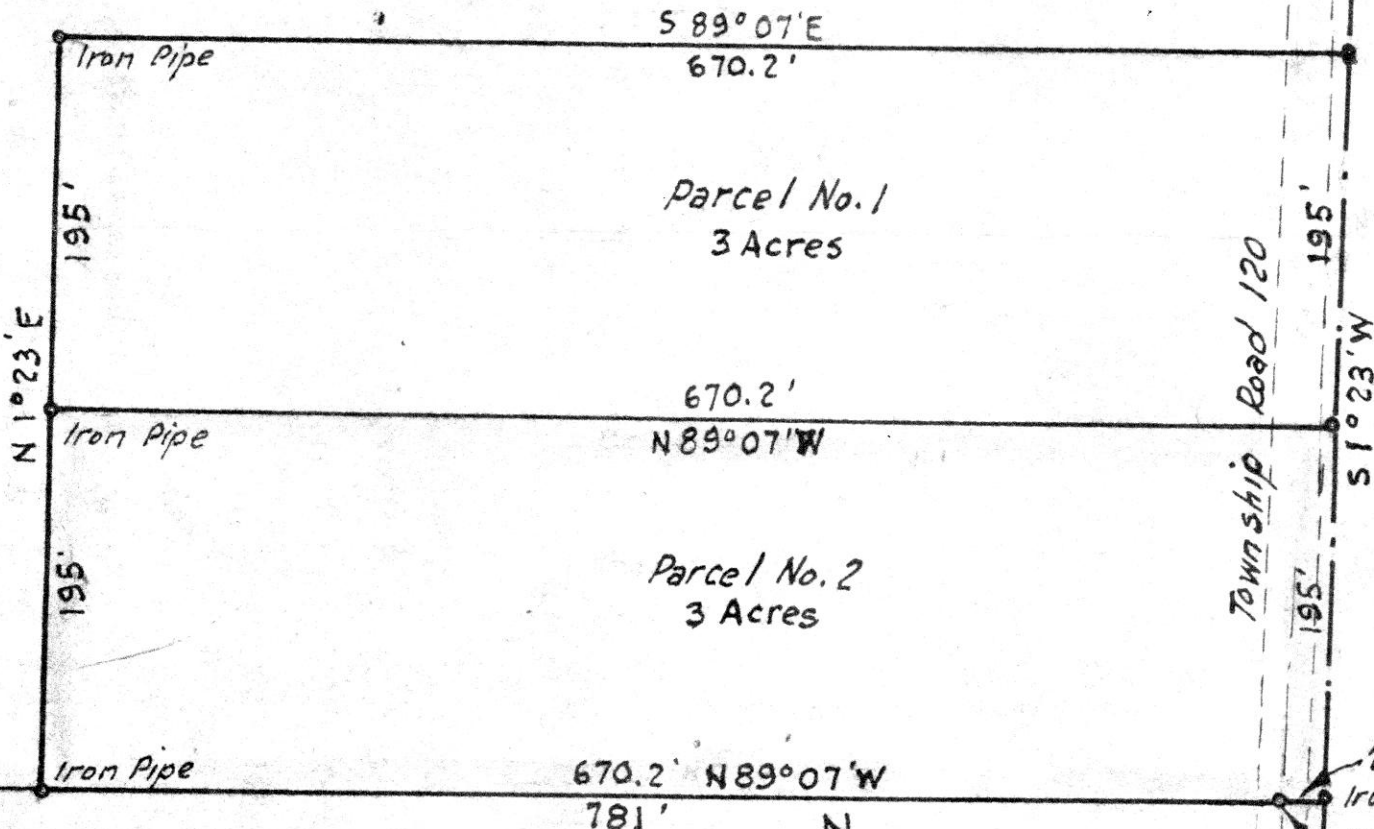
John E. & Edna Troyer

N.E. Cor.  
of Lot No. 6  
4<sup>th</sup> Qr. Twp.  
Twp. 9  
Range 6

445'  
51°23'W

Albert Hershberger

John E. & Edna Troyer



Atlee Schlabach

MAP  
SHOWING LOCATION  
OF 2 PARCELS OF LAND  
ON THE  
JOHN E. & EDNA TROYER  
FARM

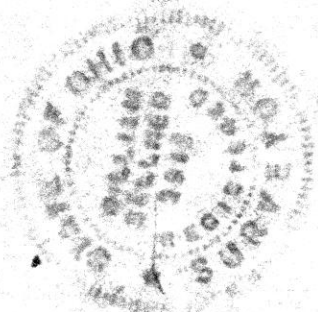
IN  
Lot No. 6, 4<sup>th</sup> Qr. Twp., Twp. 9, Range 6  
Berlin Township, Holmes County  
Ohio

Scale 1" = 100 ft.

August 1965-

Drawn from  
a survey by

*William Sellner*  
Reg. Sur. No. 3915



REC'D: August 31, 1965

79434

AT 8:37 O'CLOCK P.M.

N.E. Cor. of Section 9

RECORDED: August 31, 1965

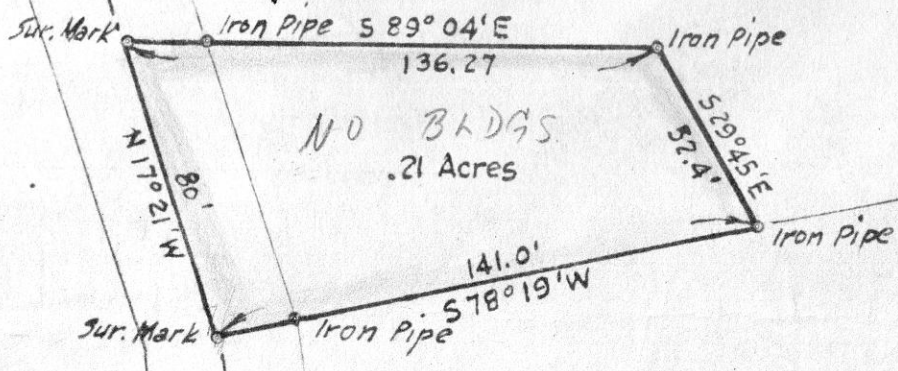
HOLMES CO. PLAT VOL. 4 PG. 69

Edwin C. Miller

FEE: \$1.00

Evelyn Anderson RECORDER  
P.S.

2428.8'  
5500.0' W



Edwin C. Miller

Holmes County Road 201

Abe O. Miller

East Line of Section 9



MAP  
SHOWING LOCATION  
OF A PARCEL OF LAND  
DEEDED BY

EDWIN C. MILLER  
TO  
AMANDA WEAVER

Andrew J. C. Yoder

Section 9, Township 14, Range 12  
Salt Creek Township, Holmes County  
Ohio

Scale 1" = 100 ft.

Aug. 1965

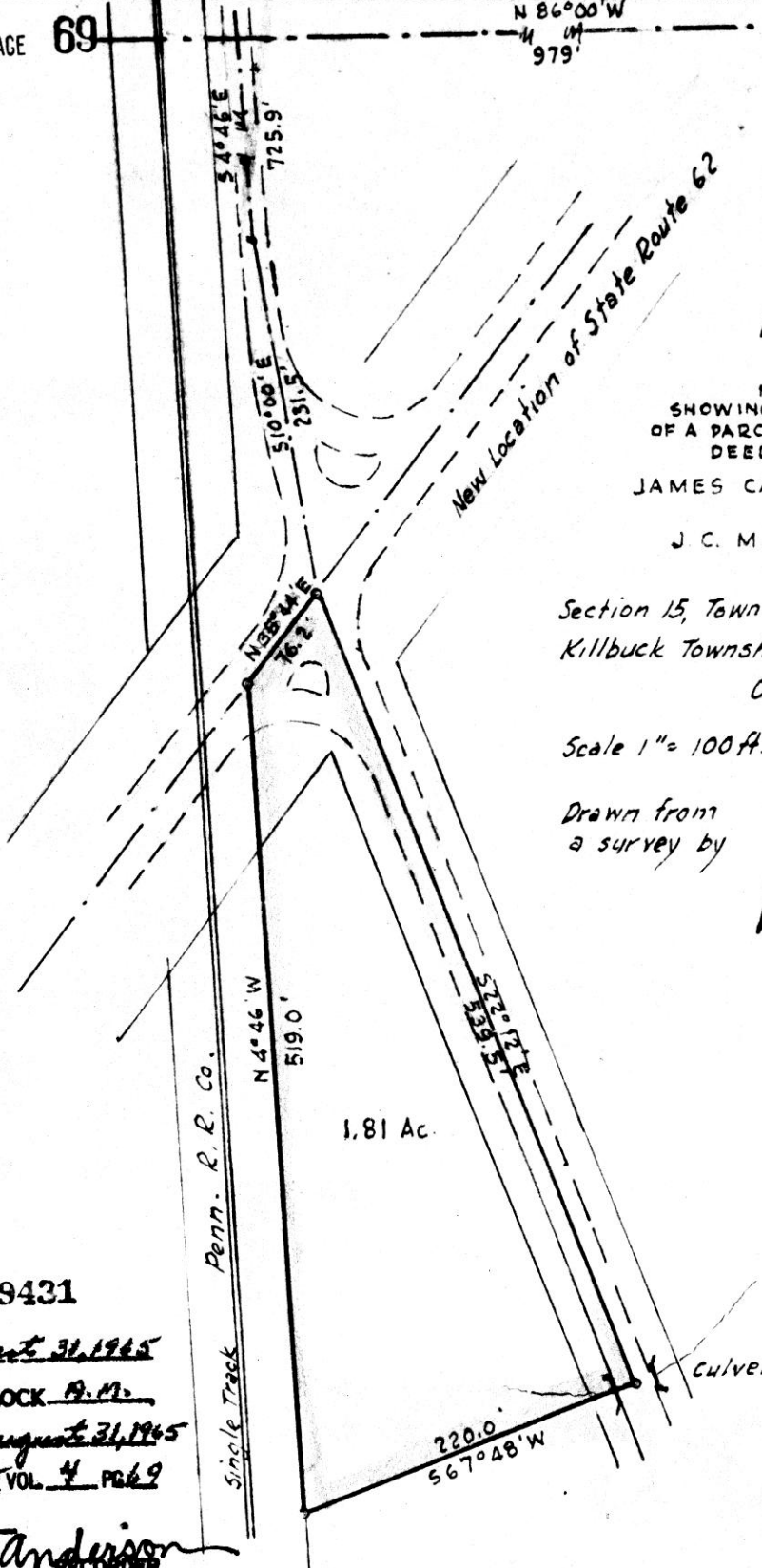
Drawn from a  
survey by

William Sellner  
Reg. Sur. No. 3915



N 86°00' W  
979'

N.E. Cor.  
of S.W. Qr.  
Sec. 15



MAP  
SHOWING LOCATION  
OF A PARCEL OF LAND  
DEEDED BY  
JAMES CARPENTER  
TO  
J. C. MASON  
IN

Section 15, Township 8, Range 7  
Killbuck Township, Holmes County  
Ohio

Scale 1" = 100 ft.

Aug. 1962

Drawn from  
a survey by

William Setzner  
Reg. Sur. No. 3913



1.81 Ac.

Penn. R. R. Co.

Single Track

Culvert

79431

REC'D: August 31, 1965  
AT 10:27 O'CLOCK A.M.  
RECORDED: August 31, 1965  
HOLMES CO. PLAT VOL. 4 PAGE 69

FEES: \$1.00  
Evelyn Anderson  
RECORDER