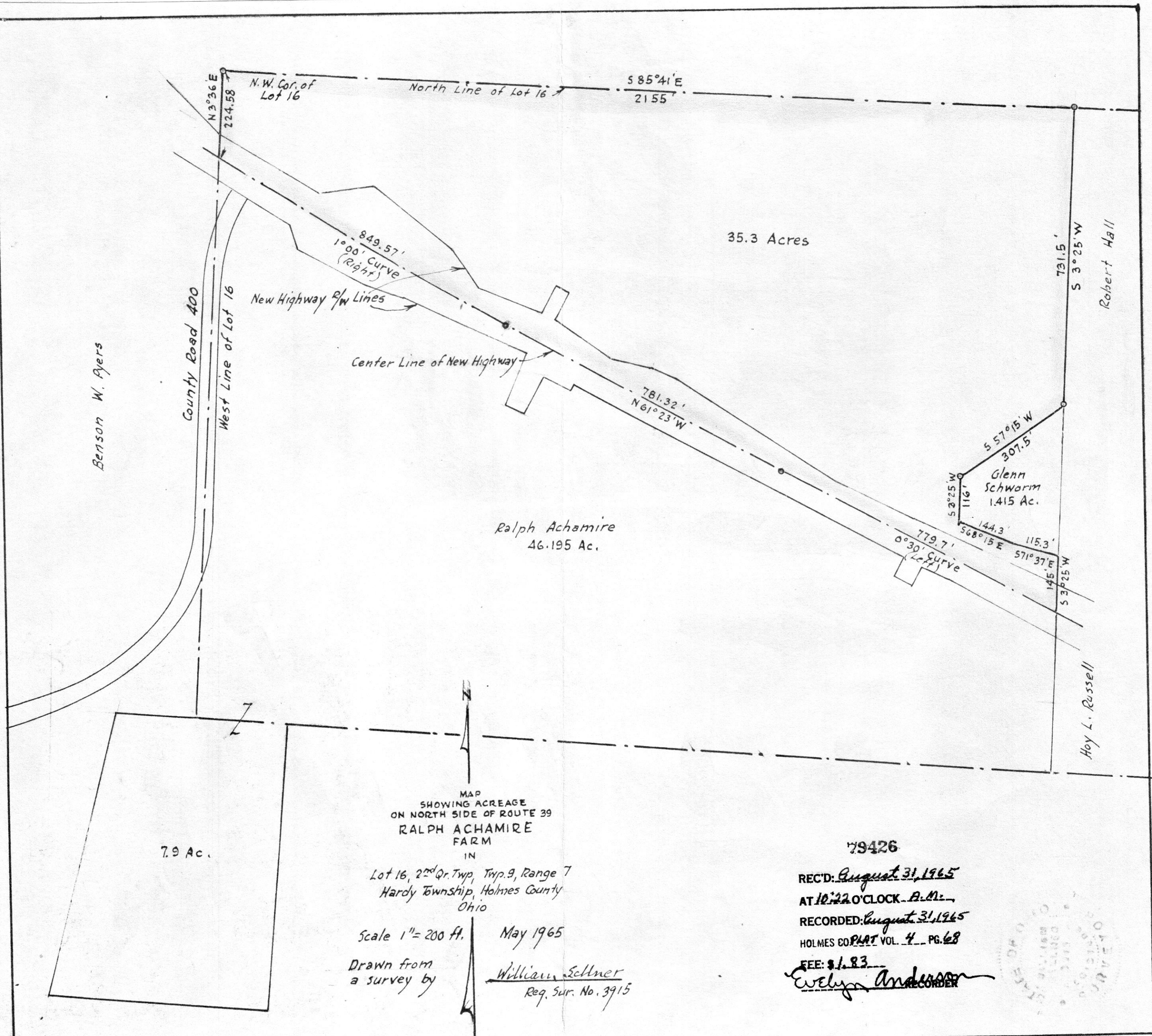


14 1/4 X 12 3/4



7.9 Ac.

MAP SHOWING ACREAGE ON NORTH SIDE OF ROUTE 39 RALPH ACHAMIRE FARM

IN Lot 16, 2nd Qr. Twp, Twp. 9, Range 7 Hardy Township, Holmes County Ohio

Scale 1" = 200 ft.

May 1965

Drawn from a survey by

William Sellner Reg. Sur. No. 3915

79426

REC'D: August 31, 1965

AT 10:22 O'CLOCK A.M.

RECORDED: August 31, 1965

HOLMES CO. PLAT VOL. 4 PG. 68

SEE: 81.83

Evelyn Anderson RECORDER

