

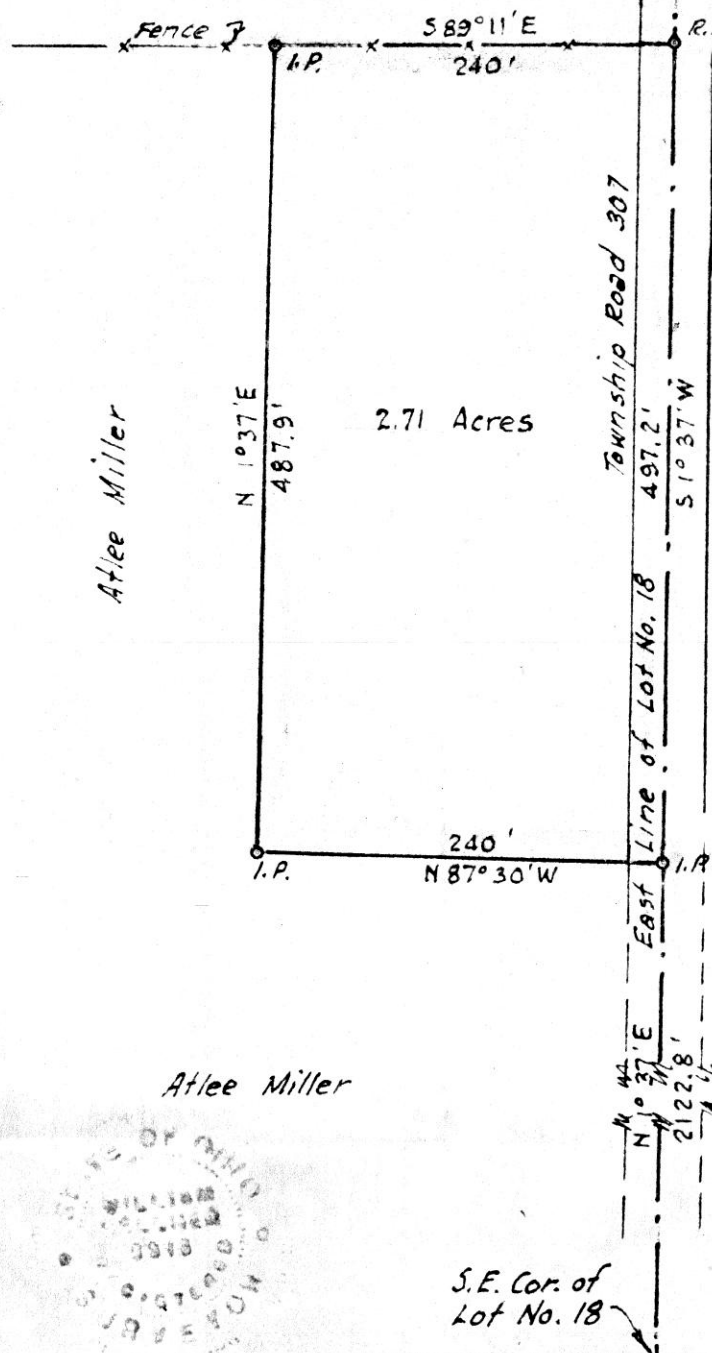
66

79221  
REC'D: July 27-1965  
AT 11:30 O'CLOCK A.M.  
RECORDED: July 30, 1965  
HOLMES CO. VOL. 4 PG. 66  
FEE: \$1.<sup>00</sup>

*Evelyn Anderson* RECORDER

James Hall

Township Road 308



Domestic Film Products Corp.

N

MAP  
SHOWING LOCATION  
OF A PARCEL OF LAND  
DEEDED BY  
ATLEE MILLER  
TO  
NORMAN SEAMAN  
IN

Lot 18, 3<sup>rd</sup> Qr. Twp, Twp 9, Range 7  
Hardy Township, Holmes County  
Ohio

Scale 1" = 100 ft.

July 1965

Drawn from  
a survey by

*William Sellner*  
Reg. Sur. No.  
3915

Atlee Miller



S.E. Cor. of Lot No. 18

79279

RECD: August 5-1965

AT 3:30 CLOCK P.M.

RECORDED August 6, 1965

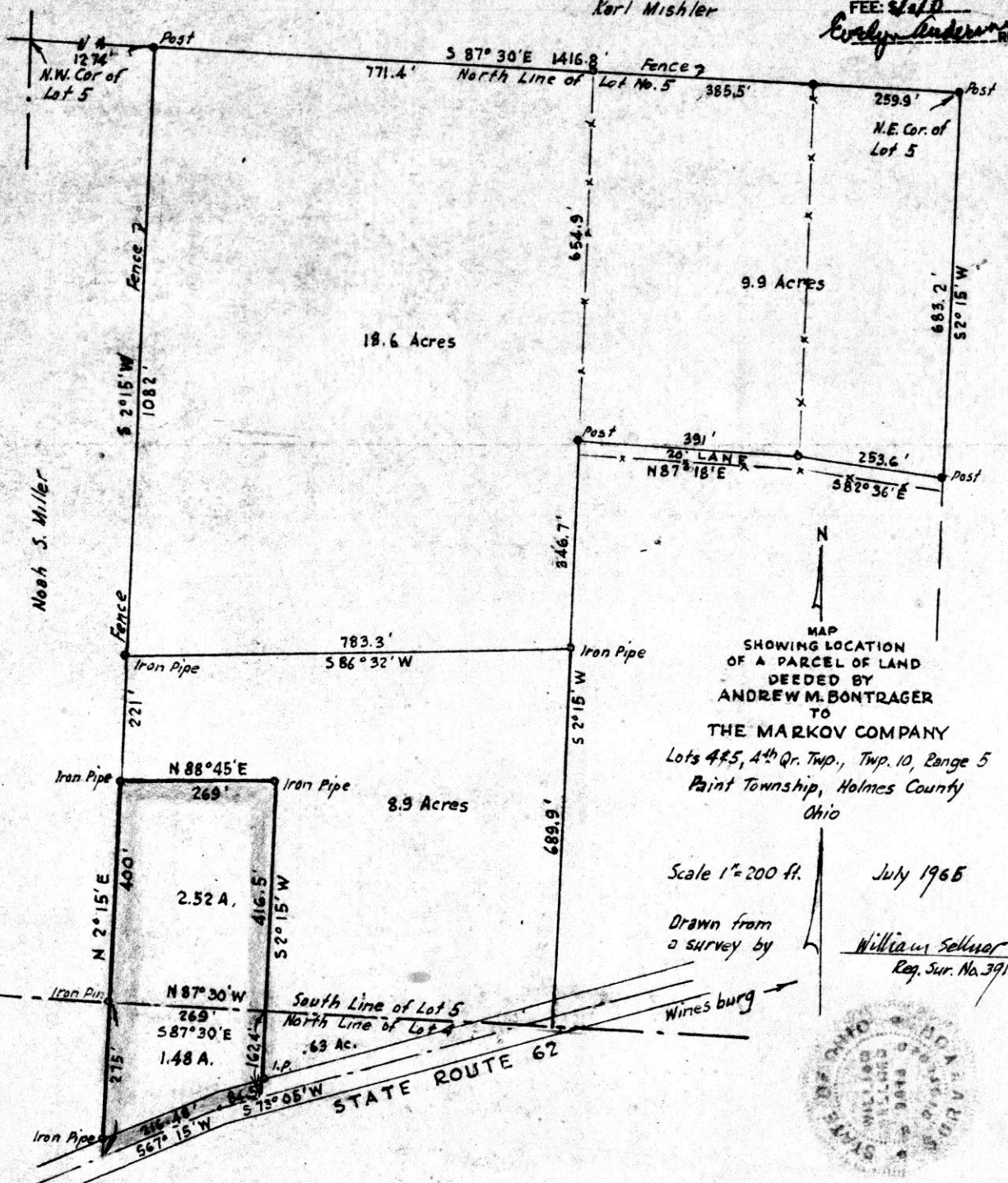
HOLMES COUNTY VOL. 4 PG. 66

FEE: \$100

Evelyn Anderson RECORDER

VOL 4 PAGE 66

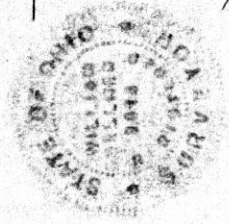
Karl Mishler



MAP  
SHOWING LOCATION  
OF A PARCEL OF LAND  
DEEDED BY  
ANDREW M. BONTRAGER  
TO  
THE MARKOV COMPANY  
Lots 4&5, 4th Qr. Twp., Twp. 10, Range 5  
Paint Township, Holmes County  
Ohio

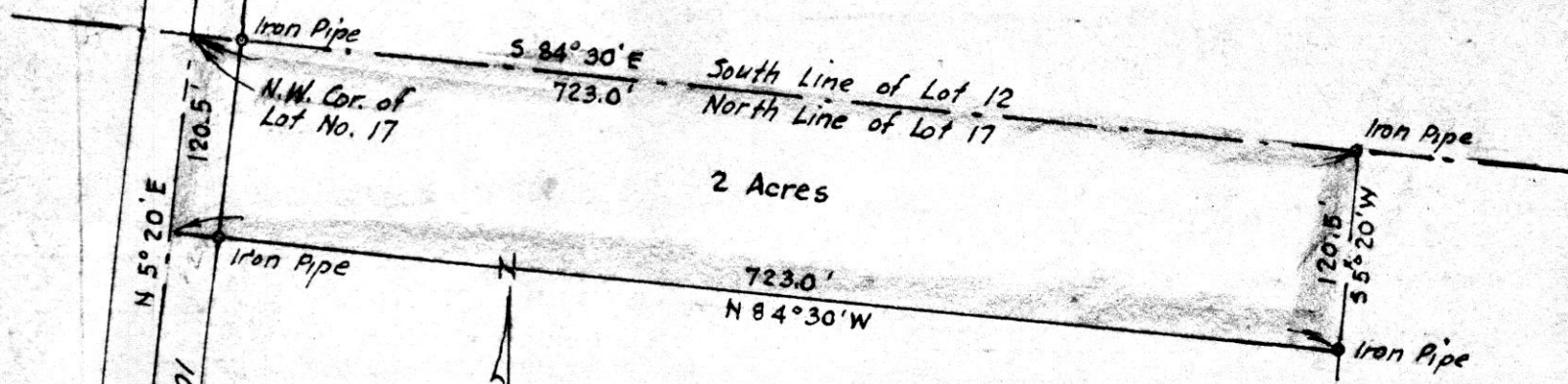
Scale 1" = 200 ft. July 1965

Drawn from a survey by William Sellner Reg. Sur. No. 3915



11/6/71

Beulah & Blake Boyd



MAP  
SHOWING LOCATION  
OF A PARCEL OF LAND  
DEEDED BY  
RAYMOND SCHLABACH  
TO  
~~RAYMOND~~ HERSHBERGER  
Fidem IN

Raymond Schlabach

Lot No. 17, 1st Gr. Twp., Twp. 9, Range 6  
Berlin Township, Holmes County  
Ohio

Scale 1" = 100 ft.

May 1965

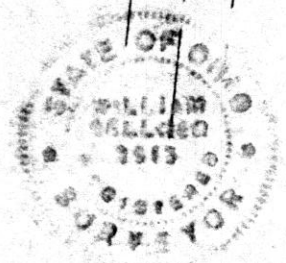
Drawn from a survey by

William Sellner  
Reg. Sur. No. 3915

79272

REC'D August 5-1965  
AT 11:70 CLOCK P.M.  
RECORDED: Aug. 6, 1965  
HOLMES CO. Plat. VOL. 4 PG. 66

FEE: \$1.00  
C. Evelyn Anderson RECORDER



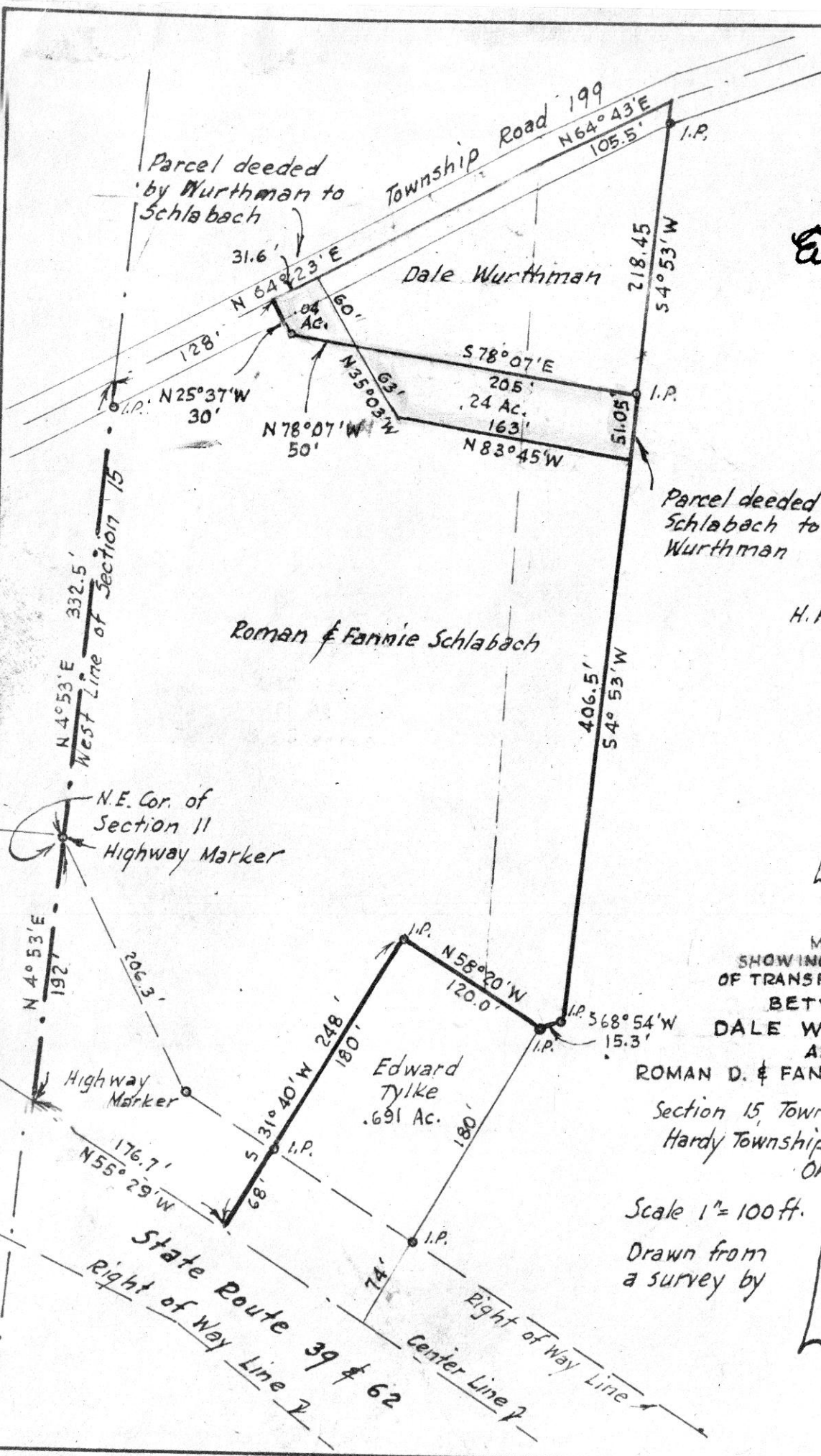
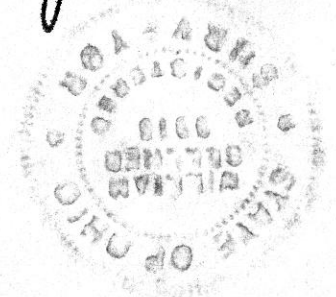
Holmes County Road 201

Raymond Schlabach

REC'D: August 3, 1965  
AT 9:54 O'CLOCK A.M.  
RECORDED August 4, 1965  
HOLMES CO. PLAT VOL. 4 PG. 66

FEE: \$ 1.00

*Erley Anderson* RECORDER



MAP  
SHOWING LOCATION  
OF TRANSFER OF LAND  
BETWEEN  
DALE WURTHMAN  
AND

ROMAN D. & FANNIE E. SCHLABACH  
Section 15, Township 9, Range 6  
Hardy Township, Holmes County  
Ohio

Scale 1" = 100 ft.  
Drawn from  
a survey by

Mar. 1965

*William Sellner*  
Req. Sur. No. 3915