

REC'D: October 29-64
AT 3:23 O'CLOCK P.M.
RECORDED: October 29-64
HOLMES CO. Plat VOL. 4 PG. 39
FEE: \$ 1.00

Orly Anderson RECORDER



MAP
SHOWING LOCATION
OF A PARCEL OF LAND
DEEDED BY

ABE. D. SCHLABACH
TO
SUNSLOPE PAROCHIAL SCHOOL
IN

Section 32. Township 14, Range 13
Prairie Township, Holmes County
Ohio

Scale 1" = 100 ft.

August 1964

Drawn from
a survey by

William Sellmer
Reg. Sur. No. 3519

Abe. D. Schlabach

N.W. Cor. of the
S.E. Qr. of
Section 32

Township Road 323

N.W. 1/4
S 1°00' W
11627.5'

S 89°00' E
275'

15' Lane

S 53°20' E
314.5'

.218 Acres in Lane

S 54°00' E
46.2'

119.5'
S 81°58' E

125.2'
N 88°45' E

N 1°00' E
280.5'

S 89°00' E
150'

1.033
Acres

300'

S 1°00' W
51°00' W

19.5'
N 1°00' E

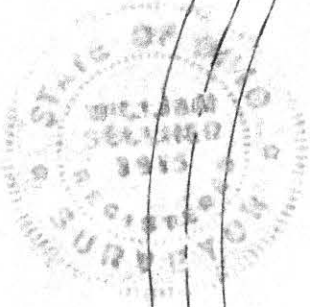
150'

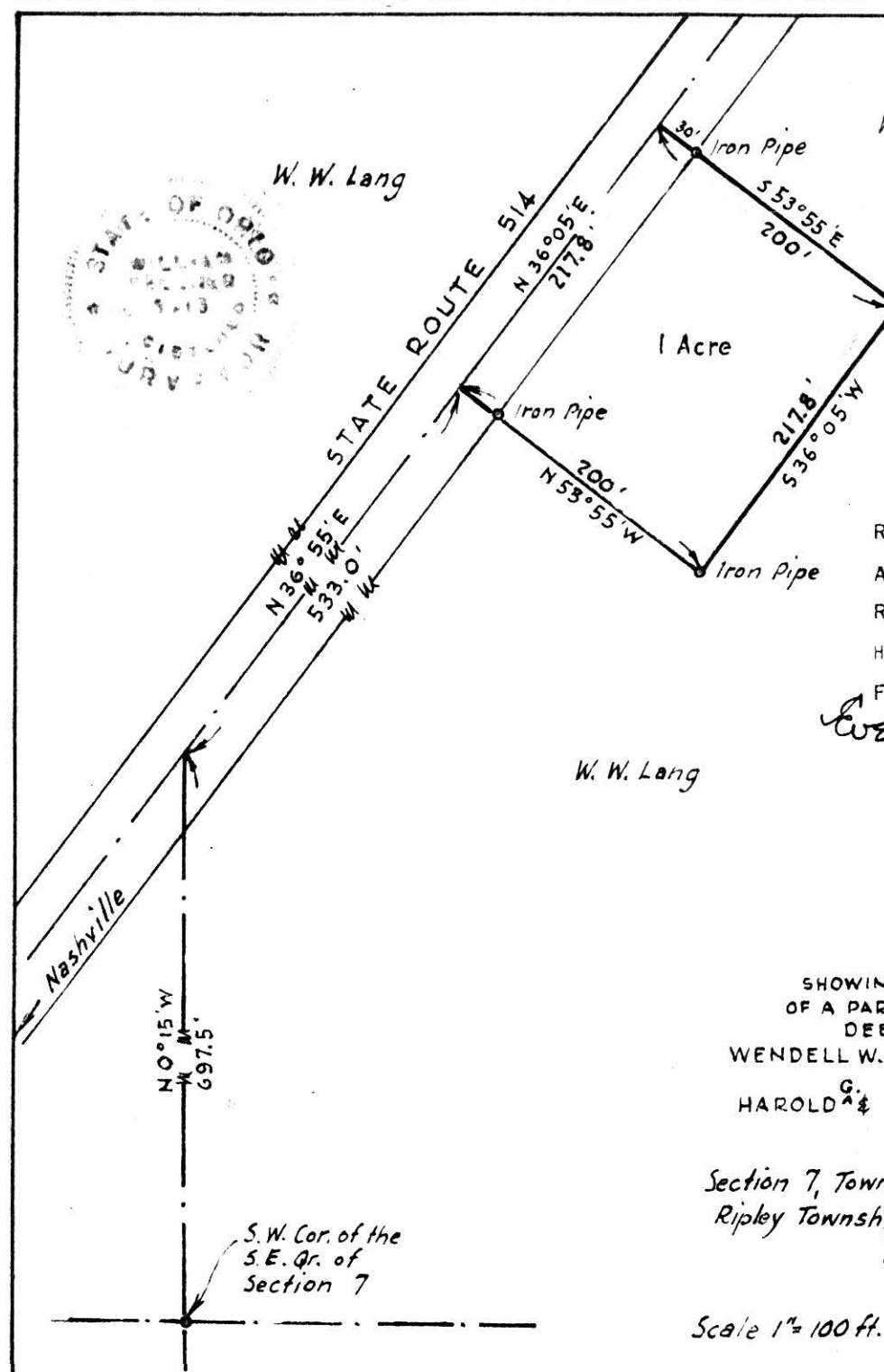
N 89°00' W

Fence

Abe D. Schlabach

Abe D. Schlabach





W. W. Lang

W. W. Lang

1 Acre

77973

REC'D: October 30-1964
AT 9:25 O'CLOCK A.M.
RECORDED: November 2, 1964
HOLMES CO. PLAT VOL. 4 PG. 39
FEE: \$ 1.00

Evly Anderson RECORDER

W. W. Lang



MAP
SHOWING LOCATION
OF A PARCEL OF LAND
DEEDED BY
WENDELL W. & JUNE M. LANG
TO
HAROLD G. & LOIS L. FOWLER
IN

Section 7, Township 17, Range 14
Ripley Township, Holmes County
Ohio

Scale 1" = 100 ft.

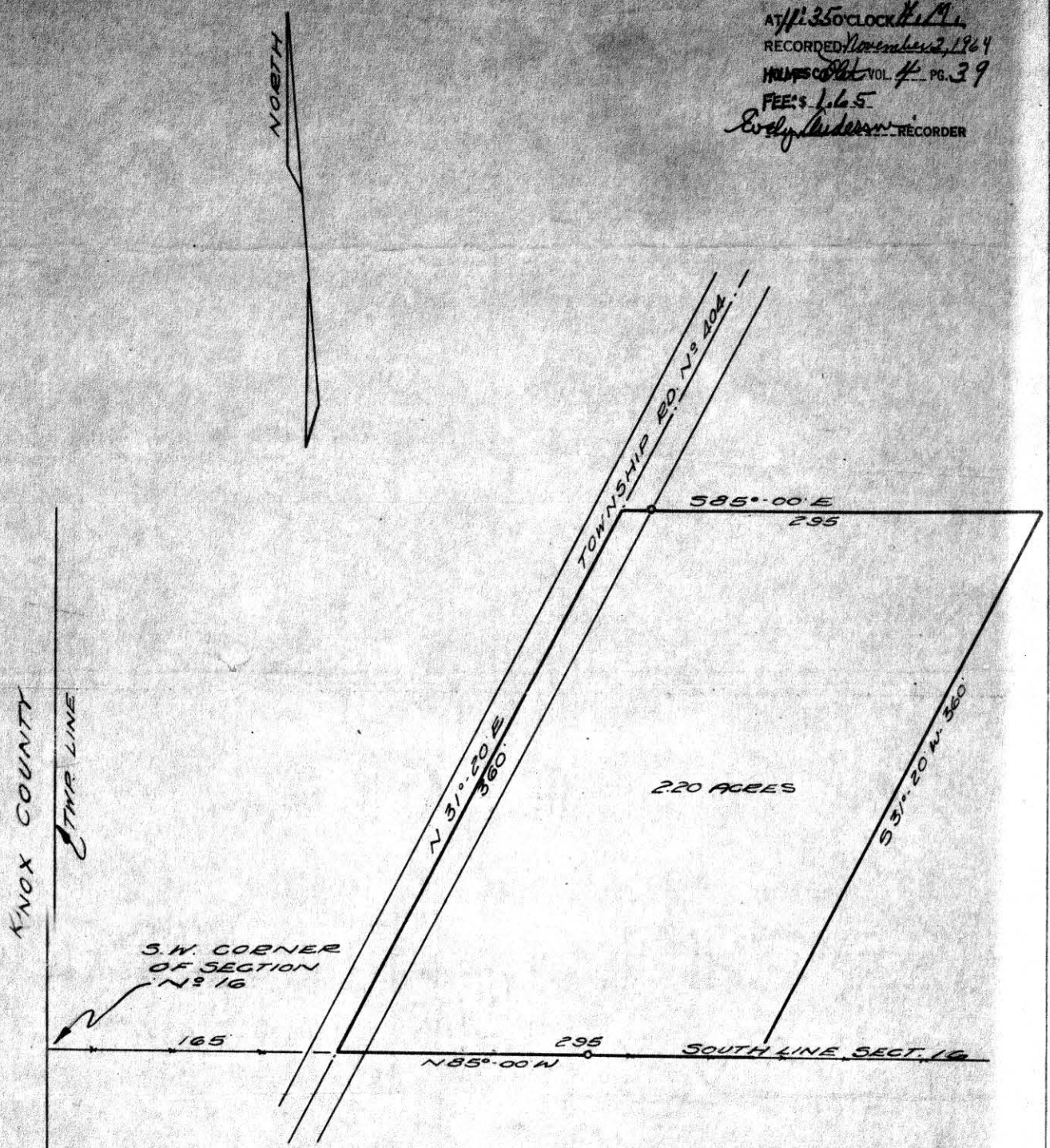
April 1964

Drawn from
a survey by

William Seltner
Reg. Sur. No. 3915

66

RECD *Oct 31-1964*
AT 11:35 O'CLOCK *K.M.*
RECORDED *November 2, 1964*
H.M.S.C. *Plat* VOL. 4 PG. 39
FEE'S *166.5*
Evelyn Anderson RECORDER



10 3/4 x 16 1/4

PART OF THE S.W. Q.R. OF SECTION 16
RICHLAND TOWNSHIP, HOLMES CO. O.
SCALE: 1" = 60'
O = IRON STAKES

I CERTIFY THIS PLAT TO BE A CORRECT
COPY OF SURVEY MADE BY ME AT THE
REQUEST OF C.H. SIMMONS



Floyd W. Barnes

December 7, 1963



MAP
SHOWING LOCATION
OF A PARCEL OF LAND
DEEDED BY
JOHN W. & RUTH M. OLDMAN
TO
KENNETH PLANK
IN
Section 33, Township 18 Range 14
Ripley Township Holmes County
Ohio

Scale 1" = 200 ft.

Nov. 1964

Drawn from
a survey by

William Sellner
Reg. Sur. No. 3915

78067

REC'D: *Nov 14 1964*

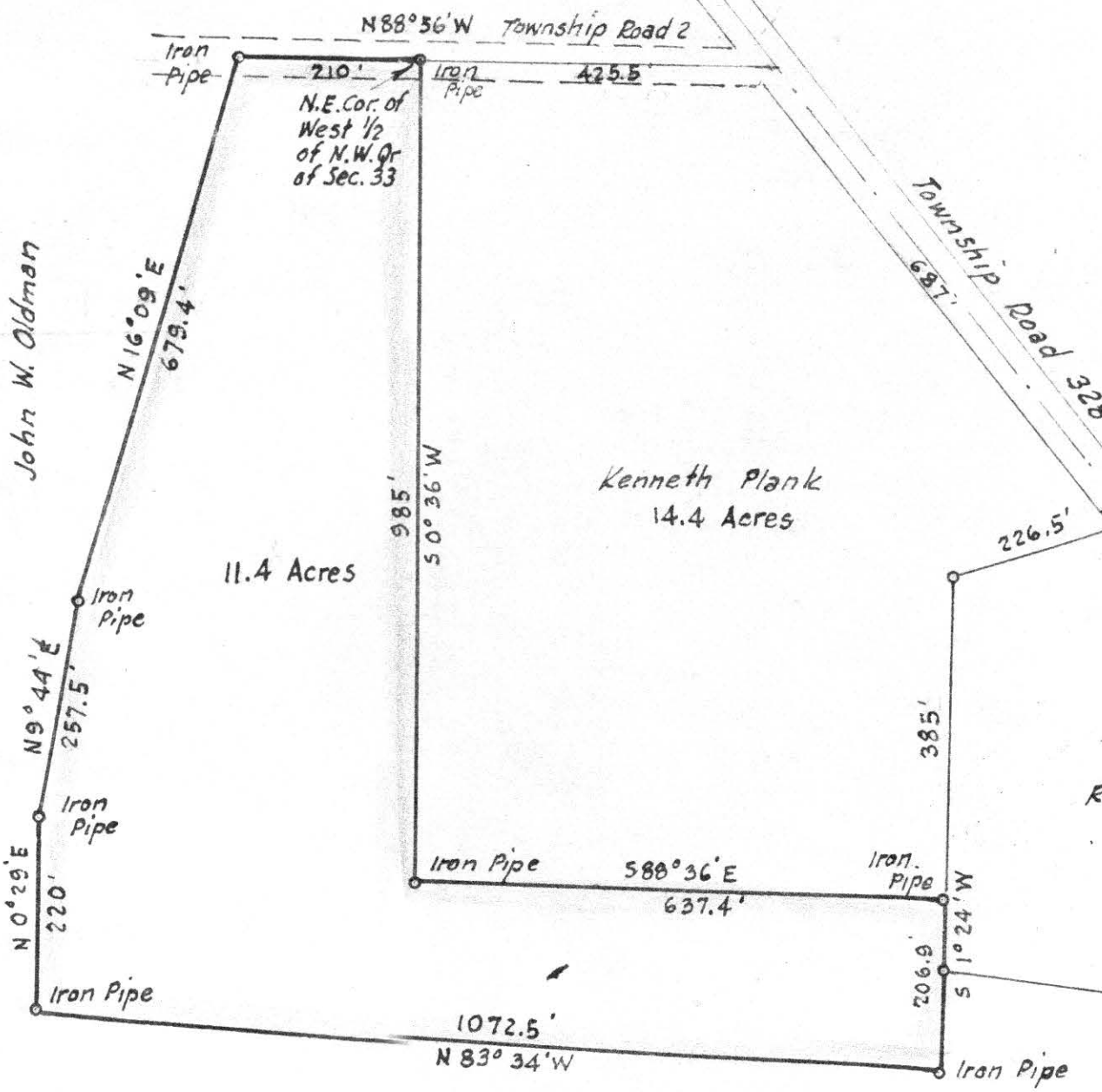
AT 11:00 O'CLOCK *11/14*

RECORDED: *Nov. 16, 1964*

HOLMES CO. *Vol 4* PG. 32

FEE: \$ *1.00*

W. J. Anderson RECORDER



Kenneth Plank
14.4 Acres

11.4 Acres

John W. Oldman

John W. Oldman

Ripley Church