



MAP
SHOWING DIVISION
OF THE
ROBERT SPAHR
PROPERTY

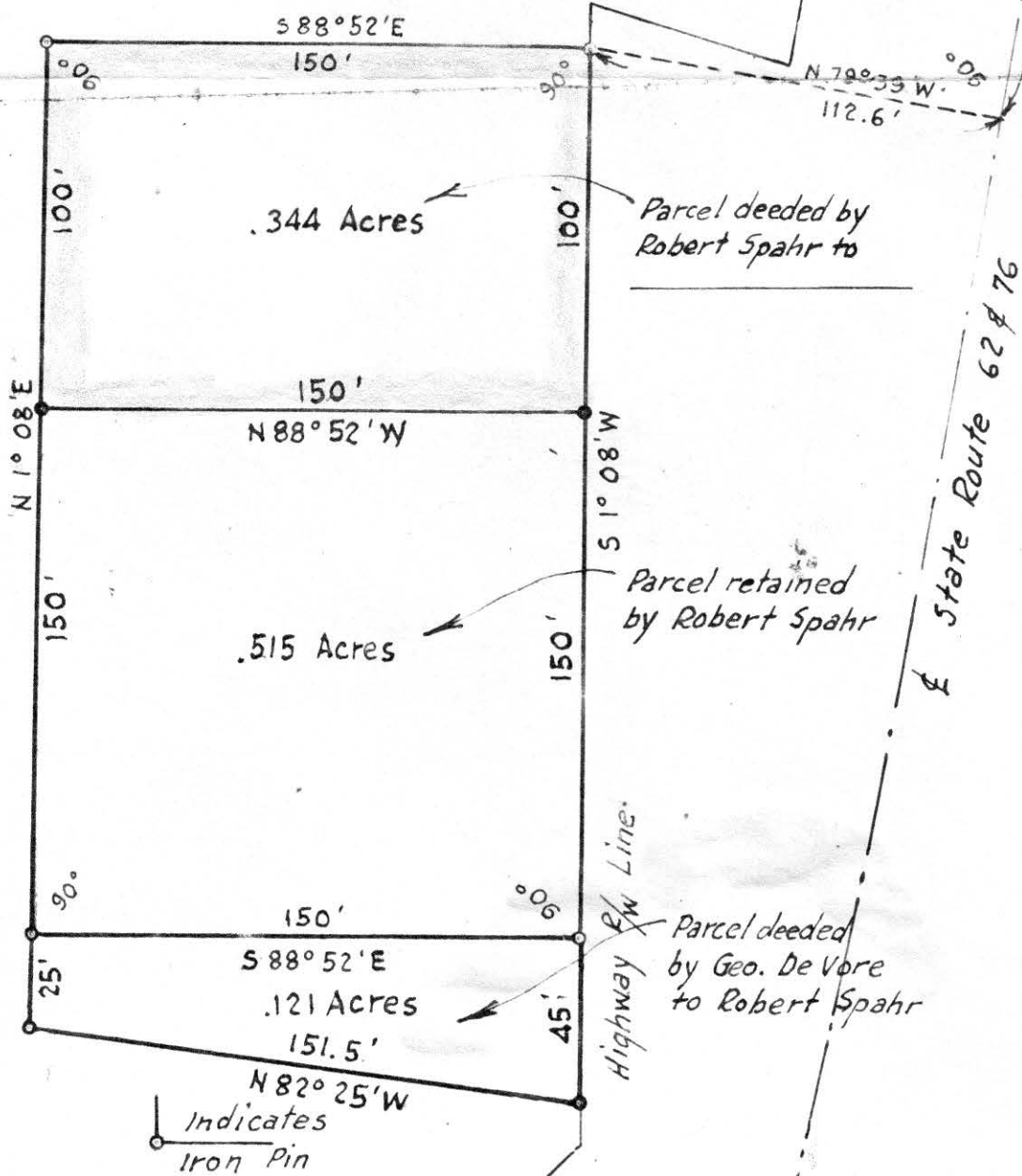
IN
Section 22, Township 9, Range 7
Hardy Township Holmes County
Ohio

Scale 1" = 50 ft. May 1963

Drawn from a
survey by

William Sellner
Reg. Sur. No. 3915

George De Vore



.344 Acres

.515 Acres

.121 Acres

Wade Logsdon

77903

REC'D October 16-1964

AT 4:30 O'CLOCK P.M.

RECORDED: Oct. 17-1964

HOLMES CO. VOL. 4 PG. 38

FEE: \$16.00

Rocky Anderson RECORDER

George De Vore

77910

REC'D: *October 19-1964*

AT 10:27 O'CLOCK *A.M.*

RECORDED: *October 19-1964*

HOLMES CO. *Plat* VOL. *4* PG. *38*

FEE: \$ *1.00*

Evelyn Anderson RECORDER

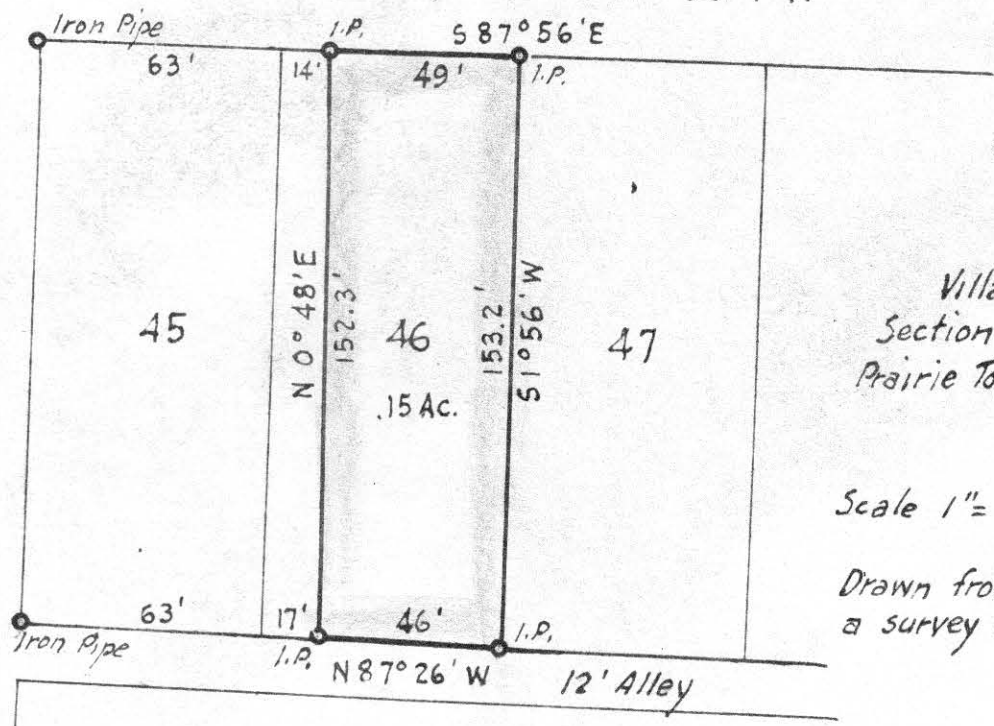
ST. 66 FT.

192

194

JEFFERSON ST. 33 FT.

TAYLOR



MAP SHOWING LOCATION OF A PART OF LOT 46

IN THE Village of Holmesville Section 3, Township 13, Range 13 Prairie Township, Holmes County Ohio

Scale 1" = 50 ft.

Drawn from a survey by

Oct. 1964

William Sellmer
Reg. Sur. No. 3915



Cemetery

North Line N.W. Qr. Sec. 24

N87°30'W
375.64

Stone

N.E. Cor.
N.W. Qr.
Section 24

E. W. Smith

Verle & Esther Sprang

S38°30'W
774.4'
State Route 514

N

MAP
SHOWING LOCATION
OF A PARCEL OF LAND
DEEDED BY

VERLE & ESTHER SPRANG
TO
RICHARD & BETTY A. GALBRAITH
IN

Section 24, Township 19, Range 15
Knox Township, Holmes County
Ohio

Scale 1" = 100 ft.

August 1964

Drawn from a
survey by

William Sellner
Reg. Sur. No. 3915

77940 Verle & Esther Sprang

REC'D: October 24-1964
AT 9:50 O'CLOCK A.M.
RECORDED: Oct. 26-1964
HOLMES CO. PLAT VOL. 4 PG. 38
FEE: \$1.00

Carolyn Anderson RECORDER
ES.

