

# CENTER LINE SURVEY PLAT

STATE ROUTE 39 - SEC. 15.04

HOLMES COUNTY - OHIO

HARDY TWP - LOTS 1-16-17-18 OF 2ND. QR., AND  
LOT 1 OF 3RD. QR. & PR. SEC. 13; T-9-N, R-7-W

76410

REC'D. February 7, 1964

AT 1:30 O'CLOCK P.M.

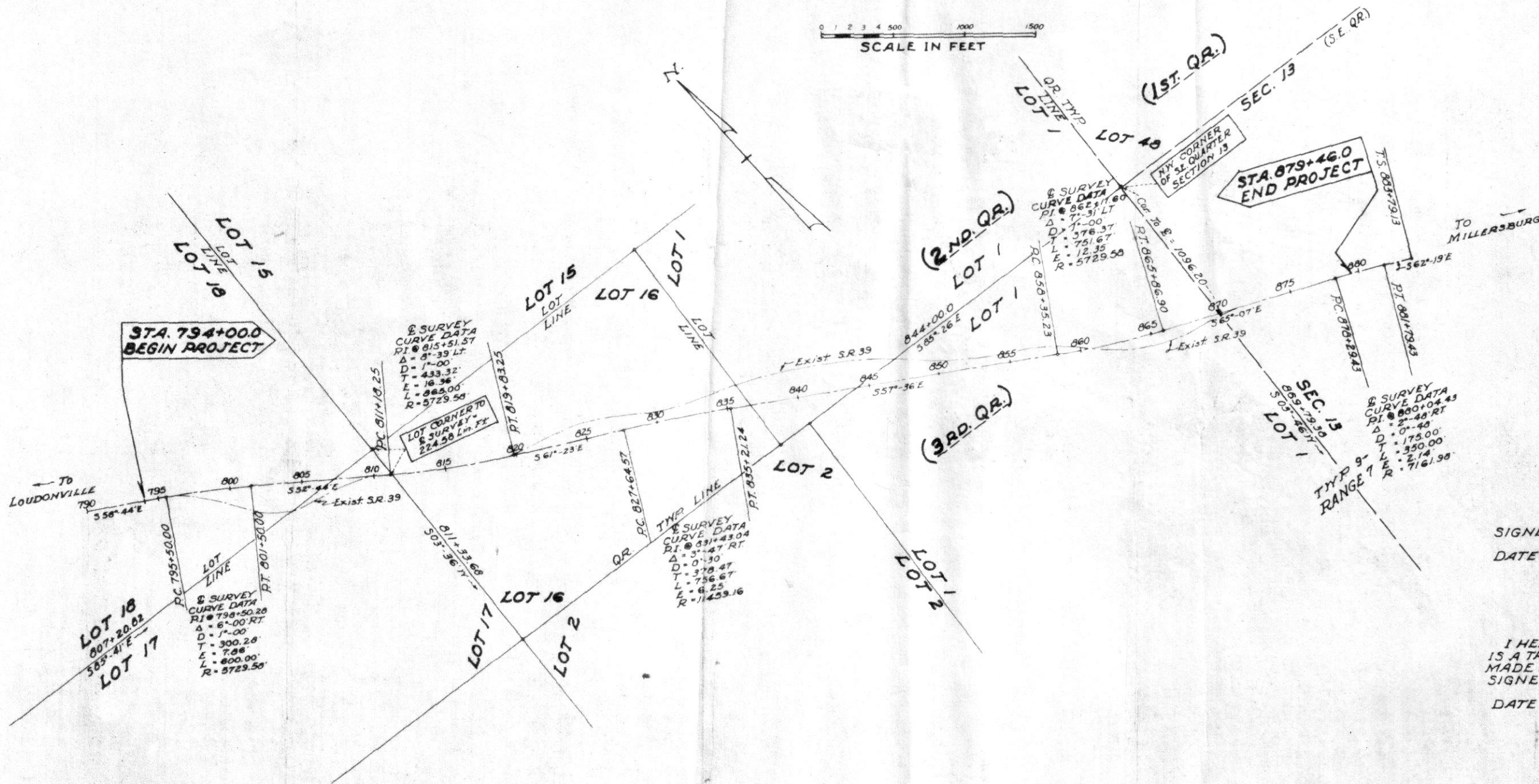
RECORDED Feb. 7, 1964

HOLMES CO. Plat VOL. 4 PG. 14

FEE: \$ 1.79

Evelyn Anderson RECORDER  
L.A.

SCALE IN FEET  
0 1 2 3 4 500 1000 1500



SIGNED Earl W. Nelson  
DATE: 9-27-63 DIVISION DEPUTY DIRECTOR

I HEREBY CERTIFY THAT THIS PLAT  
IS A TRUE DELINEATION OF A SURVEY  
MADE BY OHIO DEPARTMENT OF HIGHWAYS.  
SIGNED: Earl W. Nelson  
DATE: 9-26-63

CENTER LINE MONUMENT ASSEMBLIES WILL BE SET ON CENTER LINE DURING CONSTRUCTION AT THE FOLLOWING STATIONS.

STATION	STATION
794+00.0	853+00
795+50.00 (P.C.)	858+35.23 (P.C.)
801+50 (RT.)	862+00
806+00	865+86.90 (RT.)
811+16.25 (RC.)	872+00
815+50	878+29.43 (P.C.)
819+83.25 (RT.)	
824+00	
827+64.57 (RC.)	
835+21.24 (RT.)	
841+00	
847+00	

RECEIVED 2-7-64  
RECORDED 2-7-64  
BOOK 4 Page 14  
Evelyn Anderson  
COUNTY RECORDER