

12" x 18"

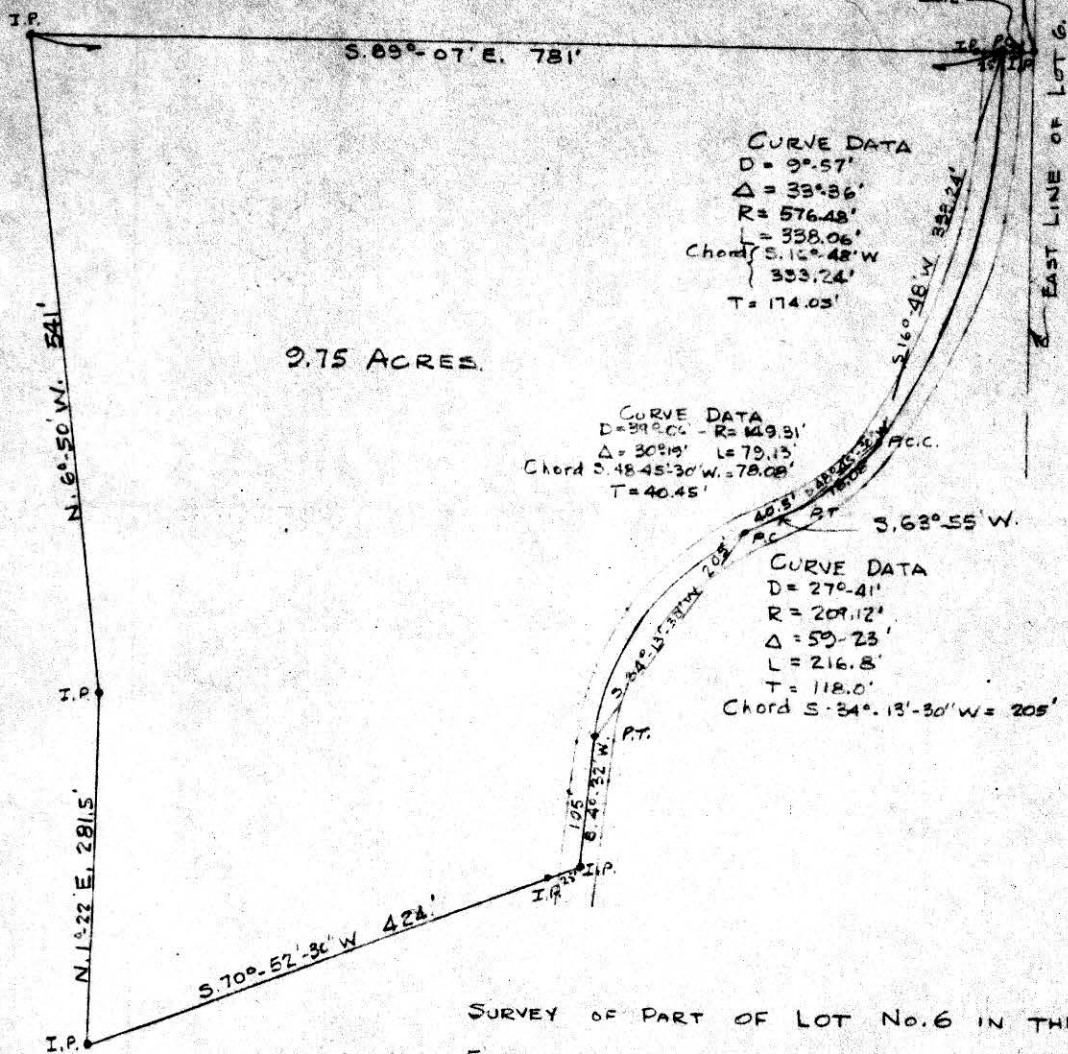
76417

LOT 1

N.E. COR. LOT 6

RECORDED February 8, 1964
AT 12:35 O'CLOCK P.M.
RECORDED 3-22-1964
HOLMES CO. 2687 VOL. 4 - PG. 13
FEE: \$2.16
Conveyed by deed to Maxwell
28.

LOT 6



9.75 ACRES.

CURVE DATA
D = 9° 57'
Δ = 33° 36'
R = 576.48'
L = 338.06'
Chord S. 16° 48' W. 333.24'
T = 174.03'

CURVE DATA
D = 39° 00' - R = 149.31'
Δ = 30° 19' L = 79.15'
Chord S. 48° 45' 30" W. = 78.09'
T = 40.45'

CURVE DATA
D = 27° 41'
R = 209.12'
Δ = 53° 23'
L = 216.8'
T = 118.0'
Chord S. 34° 13' 30" W = 205'

SURVEY OF PART OF LOT No. 6 IN THE
FOURTH QUARTER TOWNSHIP; TOWNSHIP No. 9;
RANGE No. 6; CONNECTICUT WESTERN RESERVE
SCHOOL LANDS; BERLIN TOWNSHIP, HOLMES
COUNTY OHIO, TO CONVEY A PARCEL FROM
MAXWELL TO SLABACH.

SCALE 1"=100'

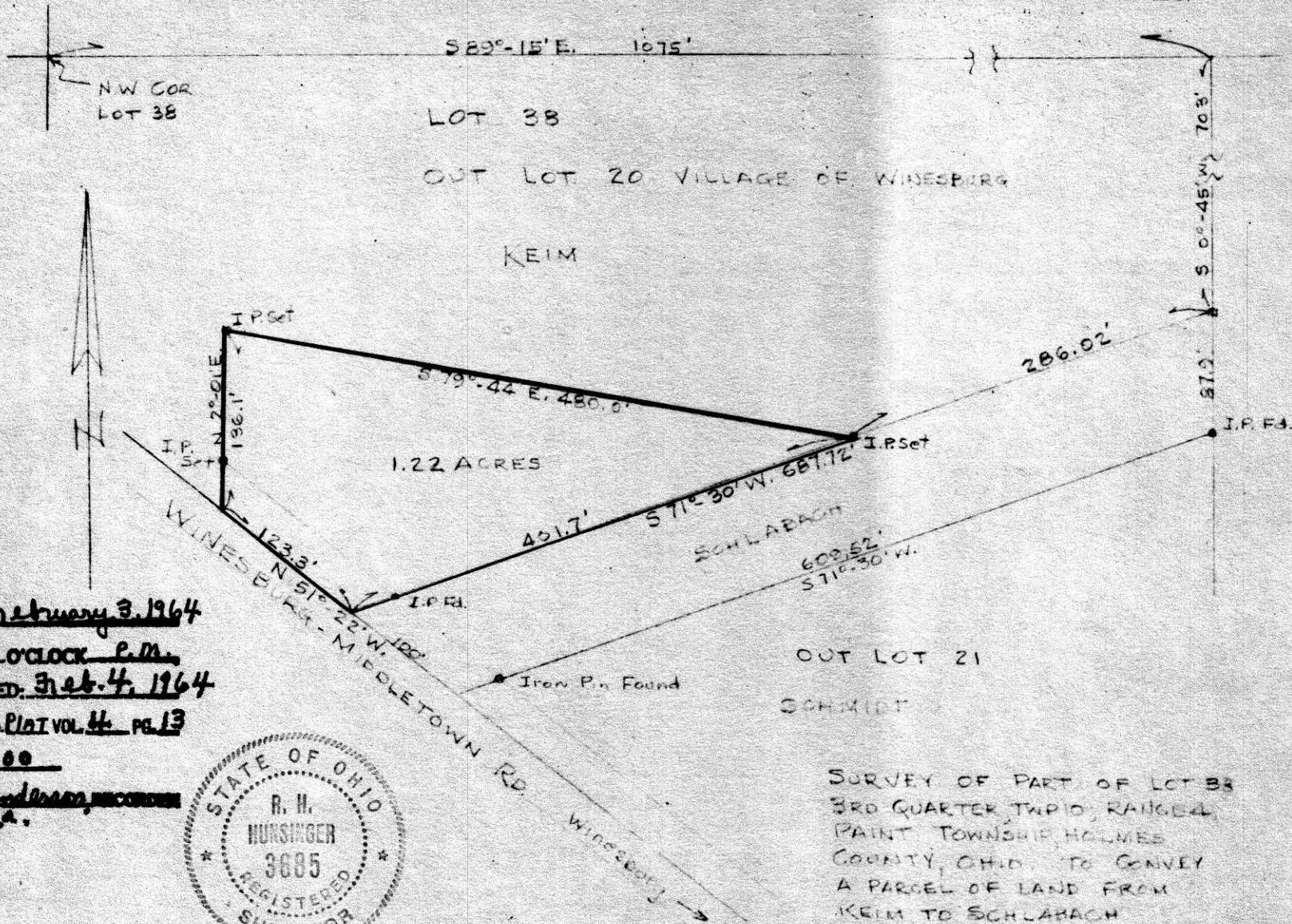
JAN. 11, 1964

SURVEY BY R.C. SCHNEIDER #4177 & R.H. HUNSINGER #3685
REGISTERED SURVEYORS.



76397

VOL 4 PAGE 13



RECT. February 3, 1964

AT 2:35 O'CLOCK P.M.

RECORDED: Feb. 4, 1964

HOLMES CO. PLAT VOL. 4, PG. 13

FEE: \$1.00

Evelyn Anderson, recorder
L.A.



SURVEY OF PART OF LOT 38
3RD QUARTER TWP 10, RANGE 4,
PAINT TOWNSHIP, HOLMES
COUNTY, OHIO TO CONVEY
A PARCEL OF LAND FROM
KEIM TO SCHLABACH
SCALE 1"=100' JAN. 13, 1964
SURVEY BY R.C. SCHNEIDER #4177
R.H. HUNSINGER #3685
REGISTERED SURVEYORS

76412

Grace L. Lemon

REC'D: Feb. 7, 1964

AT 1:47 O'CLOCK P.M.

RECORDED: Feb. 7, 1964

HOLMES CO. PIAT VOL 4 PG 13

FEE: \$1.00

Evelyn Anderson, RECORDER
S.S.

N



MAP
SHOWING LOCATION
OF A PARCEL OF LAND
DEEDED BY
GRACE L. LEMON
TO
SAM A. LEMON
IN

Section 27, Township 14, Range 13
Prairie Township, Holmes County
Ohio

Scale 1" = 200 ft.

Jan. 1964

Drawn from
a survey by

William Sellner
Reg. Sur. No. 3915

Grace L. Lemon

Grace L. Lemon

