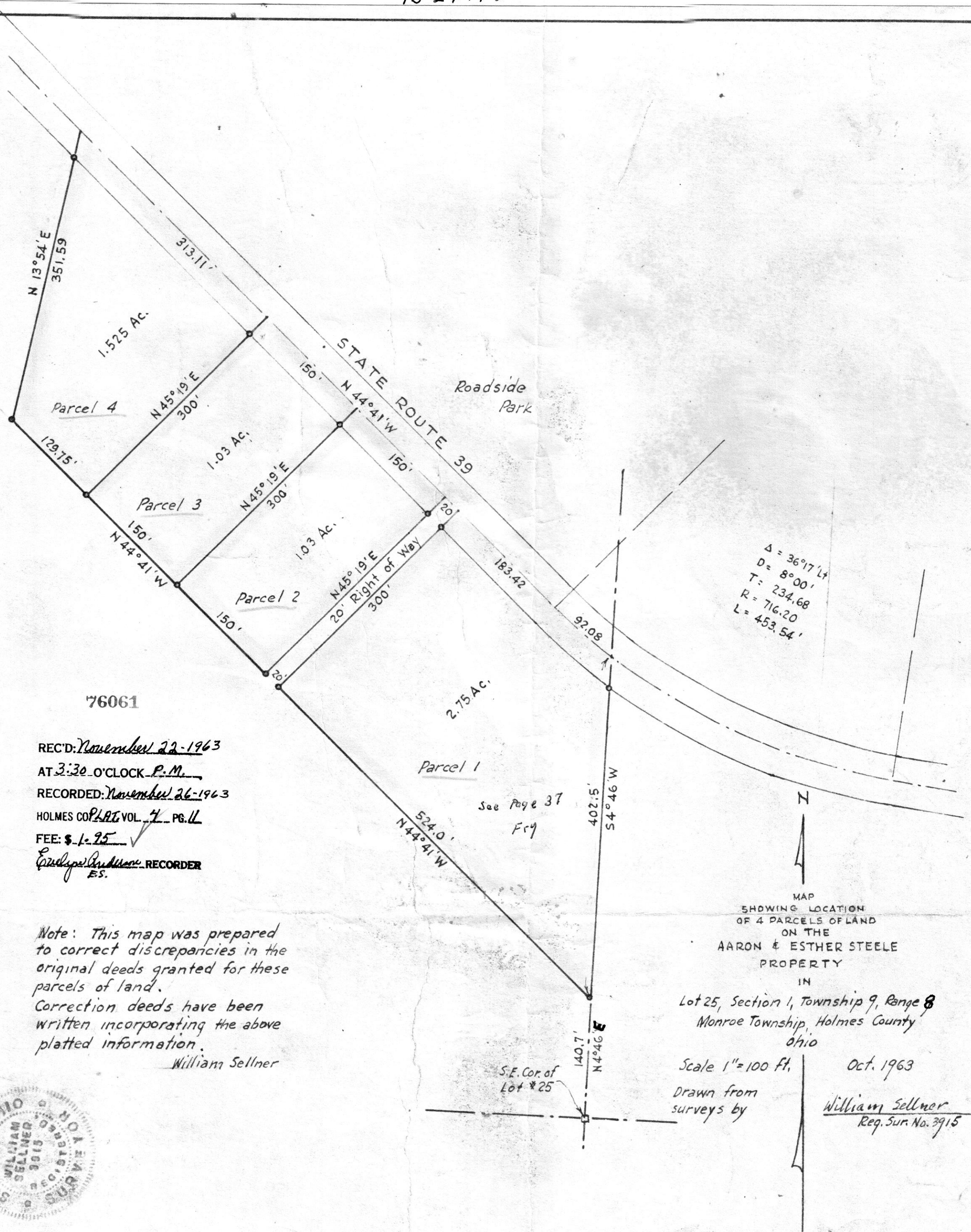


13 1/2 x 14 1/2



76061

REC'D: November 22-1963  
 AT 3:30 O'CLOCK P.M.  
 RECORDED: November 26-1963  
 HOLMES CO. PART VOL. 7 PG. 11  
 FEE: \$ 1.25  
*Erulpe Anderson* RECORDER  
 ES.

Note: This map was prepared to correct discrepancies in the original deeds granted for these parcels of land. Correction deeds have been written incorporating the above platted information.

William Sellner

See Page 37  
Fr9

MAP  
 SHOWING LOCATION  
 OF 4 PARCELS OF LAND  
 ON THE  
 AARON & ESTHER STEELE  
 PROPERTY

IN  
 Lot 25, Section 1, Township 9, Range 8  
 Monroe Township, Holmes County  
 Ohio

Scale 1" = 100 ft.  
 Drawn from  
 surveys by

Oct. 1963

*William Sellner*  
 Reg. Sur. No. 3915

