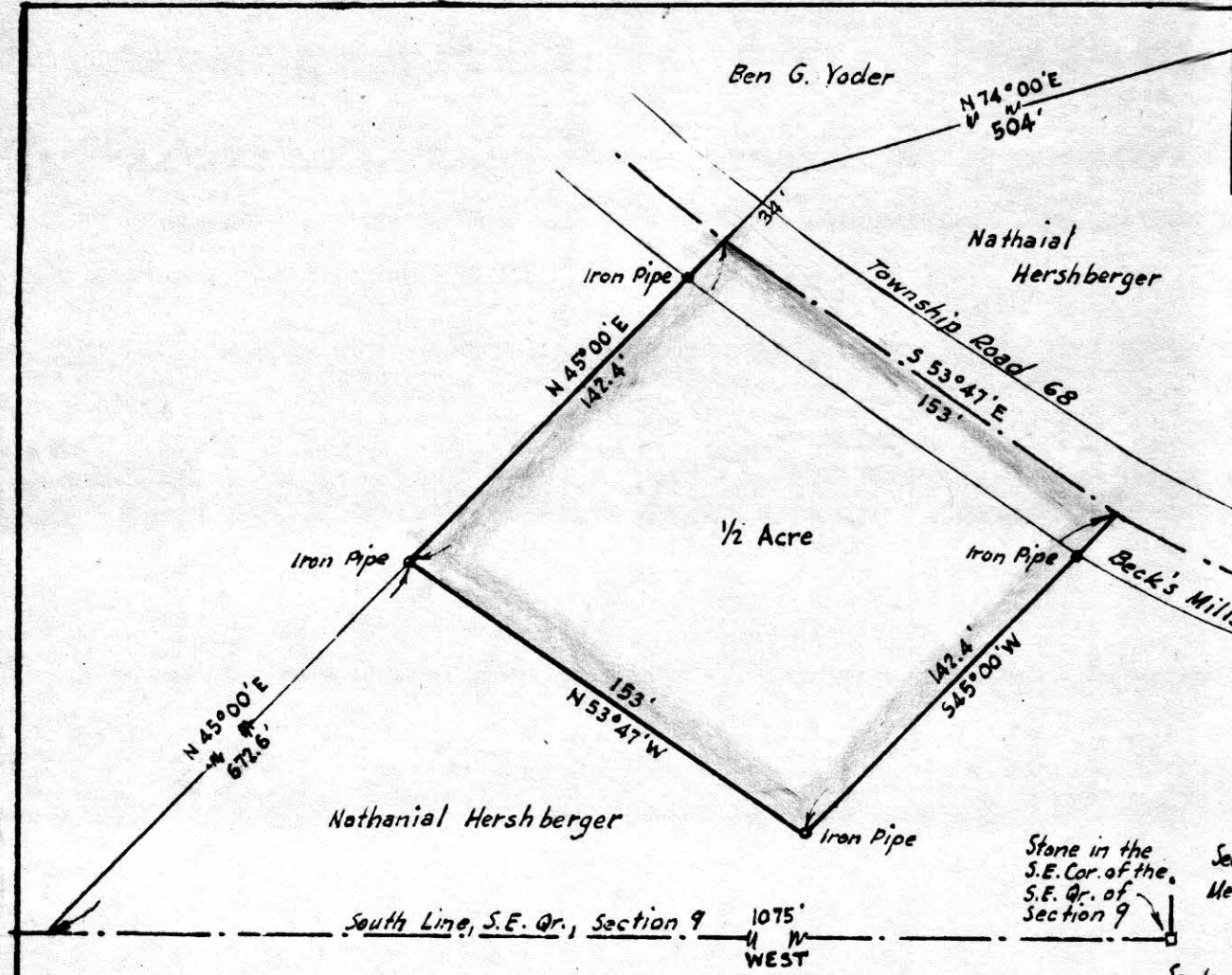


75451

REC'D: *September 21-1963*
AT 10:35 CLOCK - *H.M.*
RECORDED: *September 24-1963*
HOLMES CO. VOL. *4* PG. *7*
FEE: \$ *1.00*

William Jellner RECORDER



MAP
SHOWING LOCATION
OF A PARCEL OF LAND
DEEDED BY
NATHANIAL HERSHBERGER
TO
VICTORY HARMON
IN
Section 9 Township 8, Range 6
Mechanic Township, Holmes County
Ohio

Scale 1" = 50 ft.

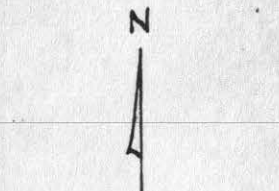
Drawn from
a survey by

Sept. 1963

William Jellner
Reg. Sur. No. 3915

N.W. Cor. of Section No. 2

David J. Yoder



MAP SHOWING LOCATION OF A PARCEL OF LAND DEEDED BY DAVID J. YODER TO

ROYAL & ESTHER GREENEISEN IN

Section 2, Township 8, Range 6
Mechanic Township, Holmes County
Ohio

Scale 1" = 100 ft.

Sept 1963

Drawn from a survey by

William Selbner
Reg. Sur. No. 3915

75468

REC'D: Sept 24 - 63

AT 2:47 O'CLOCK P.M.

RECORDED: Sept. 25, 1963

HOLMES CO. Vol. 4 PG. 7

FEE: \$ 1.00

William Selbner RECORDER

2.02 Acres

David J. Yoder

Abe & Anna Raber

1 Acre

David J. Yoder

