

75008

RECT'D: July 5, 1963  
 AT 9:00 O'CLOCK A.M.  
 RECORDED: July 5, 1963  
 HOLMES CO. PLAT VOL. 3 PG. 98-B  
 FEE: \$ 1.00

*Erny Anderson* RECORDER



Scale 1" = 200 ft.

Aug. 1962

Drawn from a survey by

*William Sellner*  
 Reg. Sur. No. 3915

74976

Ralph Conner

REC'D: July 1-1963  
 AT 10:45 CLOCK A.M.  
 RECORDED: July 1, 1963  
 HOLMES CO. Vol. 3 PG. 98 B  
 FEE: \$1.00  
Evelyn Anderson RECORDER

S.W. Cor. of the  
 N.E. Qr. of Section 5  
 Twp. 17, Range 14

N.W. Cor. of the  
 S.E. Qr. of Section 5  
 Twp. 17, Range 14

Township Road 373

State Route 514  
 1091.3'

J & S. Wengerd

2.9 Ac.

502.5'  
 53.00' W

N51°00'E  
 249'

N47°34'E  
 471.4'

S87°00'E  
 765.8'

501.3'  
 N87°00'W



MAP  
 SHOWING LOCATION  
 OF A PARCEL OF LAND  
 DEEDED BY  
 RALPH CONNER  
 TO  
 WILLIAM YEATER  
 IN

Section 5, Township 17, Range 14  
 Ripley Township, Holmes County  
 Ohio

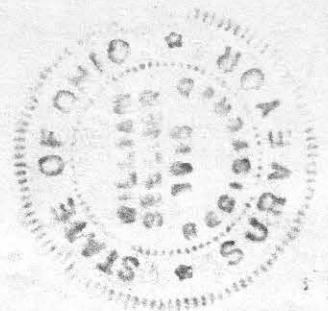
Indicates  
 Iron Pipe

Scale 1" = 200 ft.

May 1963

Drawn from a  
 survey by

William Sellner  
 Reg. Sur. No. 3915



Nashville

75016

EVL

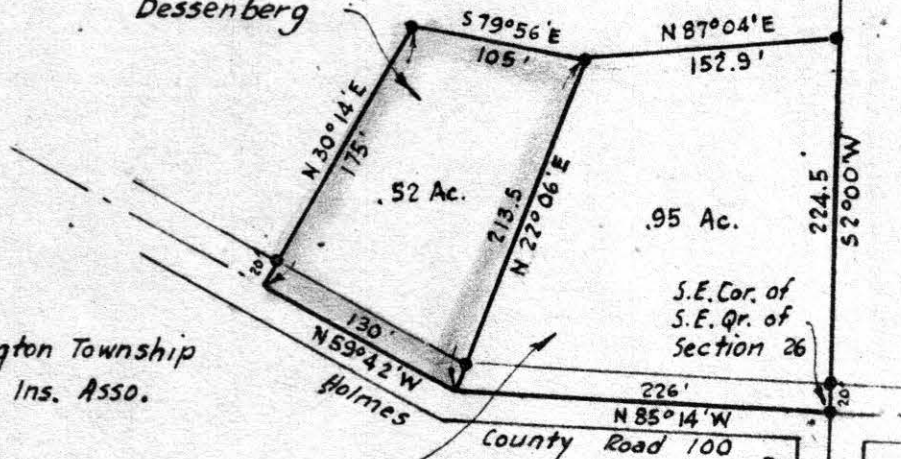
3 PAGE 98 B

RECT: July 5-1963  
AT 12:20 O'CLOCK P.M.  
RECORDED: July 5, 1963  
HOLMES CO. VOL. 3 PG. 98 B  
FEE: \$1.00

*Erly Anderson* RECORDER

Zane Wigton

Parcel deeded to  
Kenneth & Betty  
Dessenberg



Washington Township  
Mutual Ins. Asso.

Parcel deeded to



East Line S.E. Qr. of Sec. 26  
West Line S.W. Qr. of Sec. 25



MAP  
SHOWING LOCATION  
OF 2 PARCELS OF LAND  
ON THE

ZANE WIGTON PROPERTY  
IN

Section 26, Township 20, Range 15  
Washington Twp., Holmes County  
Ohio

Scale 1"=100 ft.

June 1913

Drawn from a  
survey by

*William Sellner*  
Reg. Sur. No. 3915

Indicates  
Iron Pipe

Township Road 370