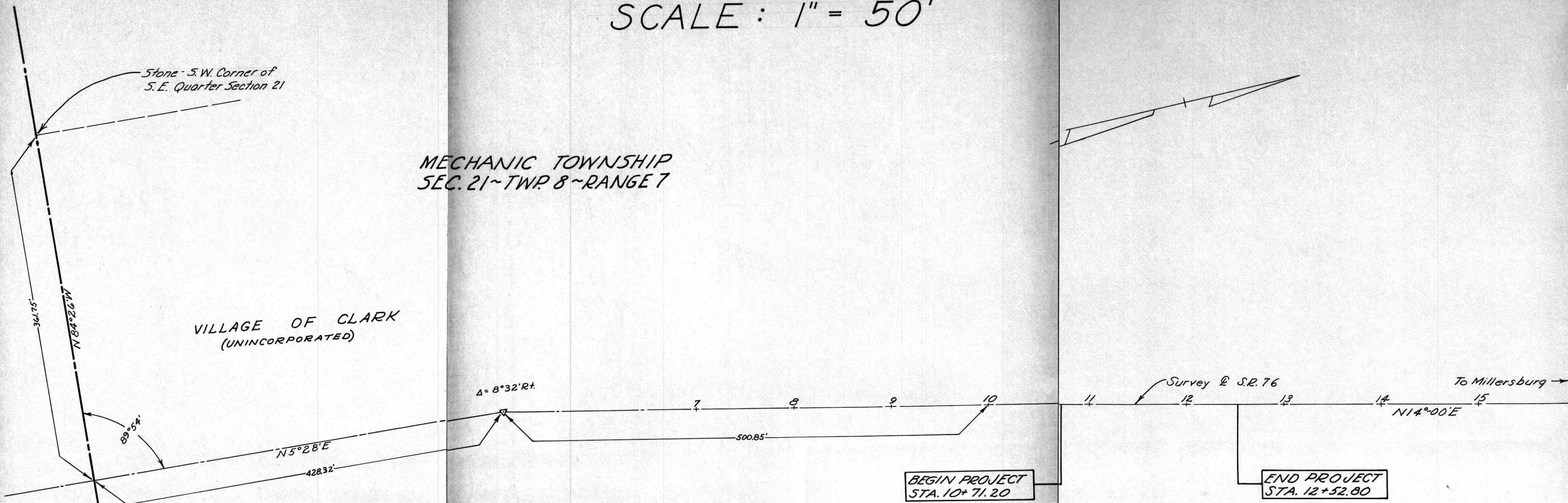


LOCATION PLAN HOL-76-0.21 1963 SCALE: 1" = 50'

MECHANIC TOWNSHIP
SEC. 21 ~ TWP 8 ~ RANGE 7

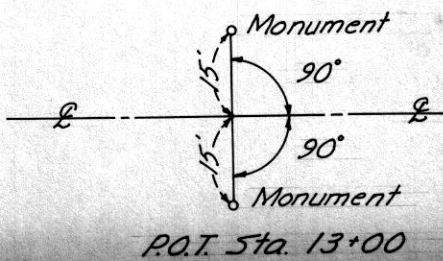
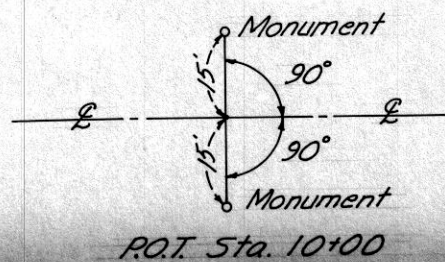
VILLAGE OF CLARK
(UNINCORPORATED)



COSHOCTON COUNTY
HOLMES COUNTY

Stone - S.W. Corner of
S.E. Quarter Section 21

REFERENCE MONUMENTS WILL BE SET DURING CONSTRUCTION AS SHOWN.



74933

REC'D June 24, 1963
 AT 11:00 O'CLOCK A.M.
 RECORDED June 24, 1963
 HOLMES CO. PLAT VOL. 3 PG. 97-B
 FEE: \$1.14
 Evelyn Anderson RECORDER

Signed: Carl W. Nelson
 Division Deputy Director
 Date: 6-24-63

I hereby certify that this plat is
 a true delineation of a survey made
 for the Ohio Department of Highways
 in 1963. Levi Kimball

Registered Surveyor
 Date: 6-24-63



Transfer not necessary June 24, 1963
 Vera D. Weil, auditor