

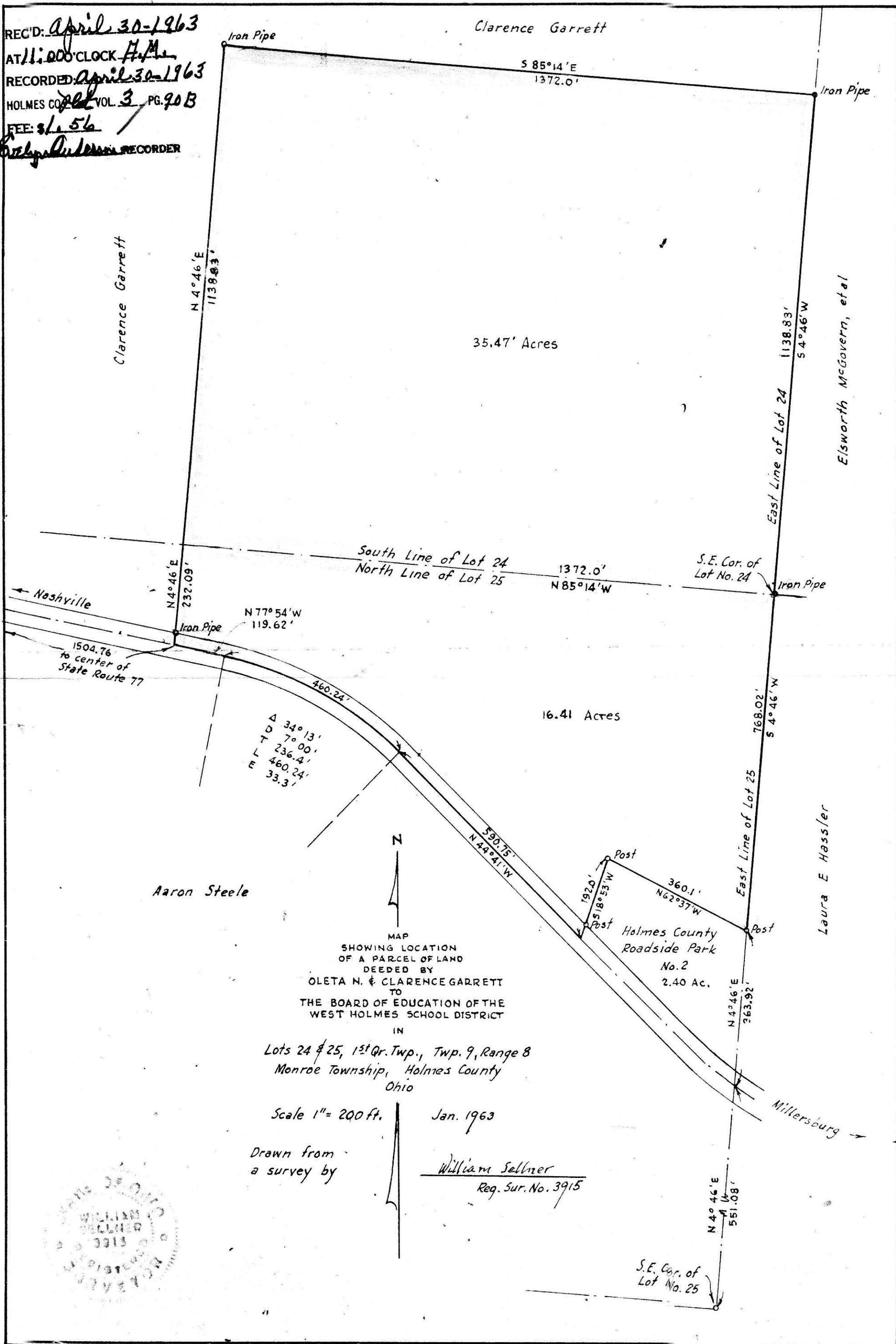
70B

15 1/4 x 10 1/4

74617

REC'D: April 30-1963
 AT 11:00 CLOCK A.M.
 RECORDED: April 30-1963
 HOLMES CO. Vol. 3 PG. 90B
 FEE: \$1.56

W. Selmer RECORDER



Clarence Garrett

Clarence Garrett

Elsworth McGovern, et al

Laura E Hassler

Aaron Steele

MAP
 SHOWING LOCATION
 OF A PARCEL OF LAND
 DEEDED BY
 OLETA N. & CLARENCE GARRETT
 TO
 THE BOARD OF EDUCATION OF THE
 WEST HOLMES SCHOOL DISTRICT
 IN

Lots 24 & 25, 1st Qr. Twp., Twp. 9, Range 8
 Monroe Township, Holmes County
 Ohio

Scale 1" = 200 ft.

Jan. 1963

Drawn from a survey by

William Selmer
 Reg. Sur. No. 3915



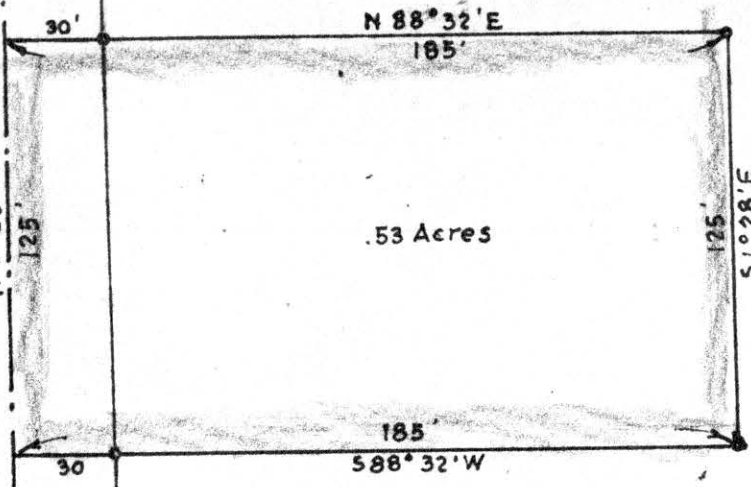
S.E. Cor. of Lot No. 25

REC'D: May 1-1963
AT 10:25 O'CLOCK A.M.
RECORDED: May 2, 1963
HOLMES CO. Plat VOL. 3 P. 88
FEE: \$1.⁰⁰

Erly Anderson RECORDER

Glenn & Elmer Summers

Glenn & Elmer Summers



.53 Acres

Delilah Mast, et al

STATE ROUTE 241

Glenn & Elmer Summers



MAP
SHOWING LOCATION
OF A PARCEL OF LAND
DEEDED BY
GLENN & ELMER SUMMERS
TO
ALBERT SUMMERS
IN

Section 1, Township 14, Range 5
Salt Creek Township, Holmes County
Ohio

Scale 1" = 50 ft.

April 1963

Drawn from
a survey by

William Sellner
Reg. Sur. No. 3916

S.W. Cor. of the
S.W. Qr. of
Section 1

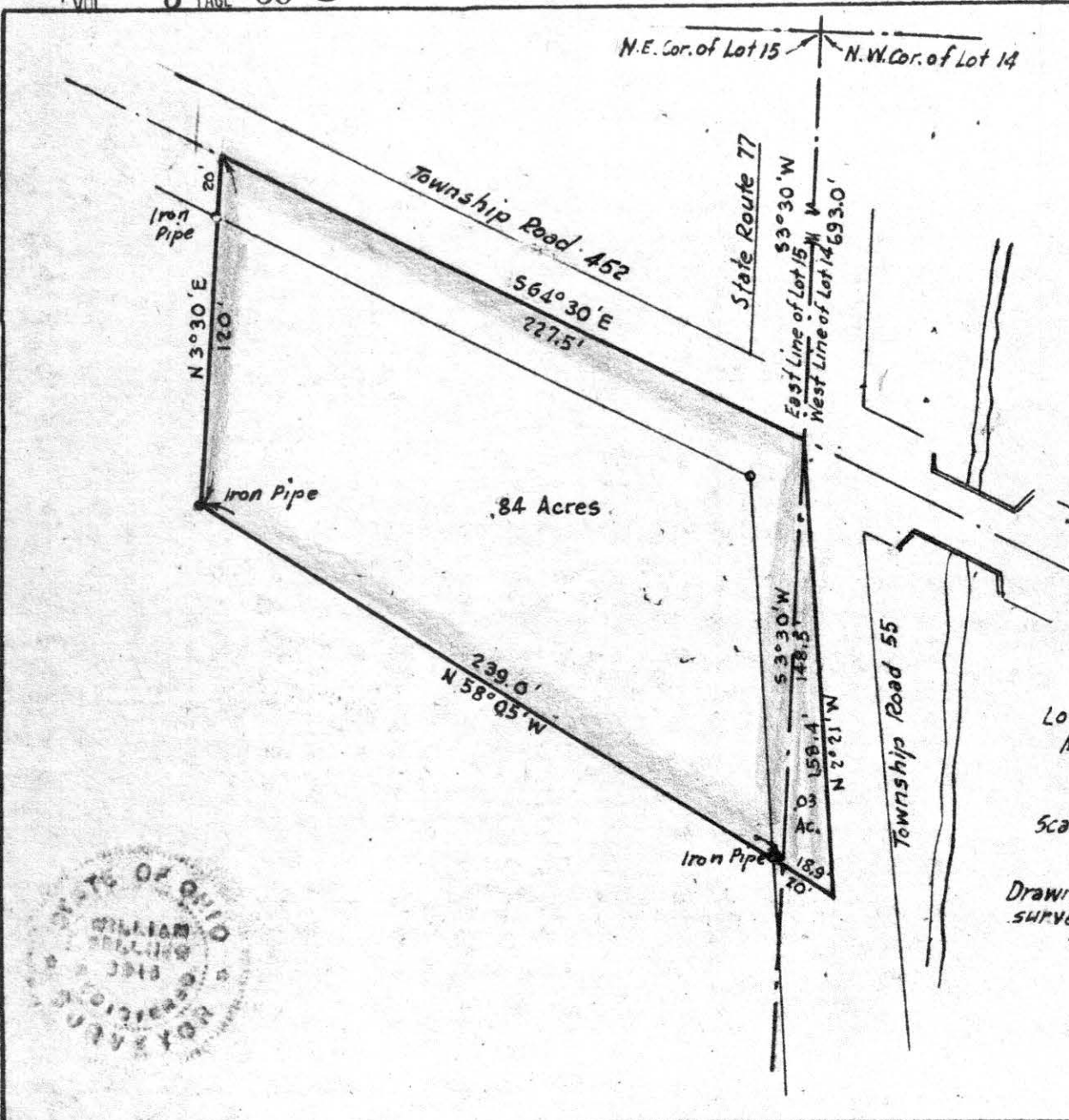
Center of Mt. Hope

State Route
241

Holmes County Road 161



74670



REC'D: May 9-1963
 AT: 1:40 O'CLOCK P.M.
 RECORDED: May 10, 1963
 HOLMES CO. 74670 VOL. 3 PG. 90B
 FEE: \$1.
Carly Anderson RECORDED

N
 MAP
 SHOWING LOCATION
 OF THE
 BESSIE BRINK RUTTER
 PROPERTY
 IN
 Lot 14 & 15, Township 9, Range 8
 Monroe Township Holmes County
 Ohio
 Scale 1" = 50 ft. April 1963

Drawn from a
 survey by
 William Sellner
 Reg. Sur. No. 3915

