

Daniel J. Schlabach, et al

REC'D: January 3-1963
 AT 11:00 O'CLOCK A.M.
 RECORDED: January 3, 1962
 HOLMES CO. Plat VOL. 3 PG. 82 B
 FEE: \$ 1.22
Carylyn Anderson RECORDER

Parcel deeded by Perry A. Stutzman to Levi A. Stutzman

Albert L Stutzman

Perry A. & Sarah Stutzman 37.1 Acres



MAP
 SHOWING DIVISION
 OF THE
 LEVI A. & ADA STUTZMAN
 AND
 PERRY A. & SARAH STUTZMAN
 PROPERTIES
 IN

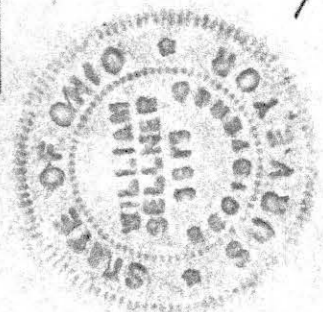
Section 9, Township 14, Range 12
 Salt Creek Township, Holmes County
 Ohio

Scale 1 1/2" = 400 ft.

Dec. 1962

Drawn from a survey by

William Sellner
 Reg. Sur. No. 3915



Dan A. Mullett

Levi A. & Ada Stutzman 37.5 Ac.

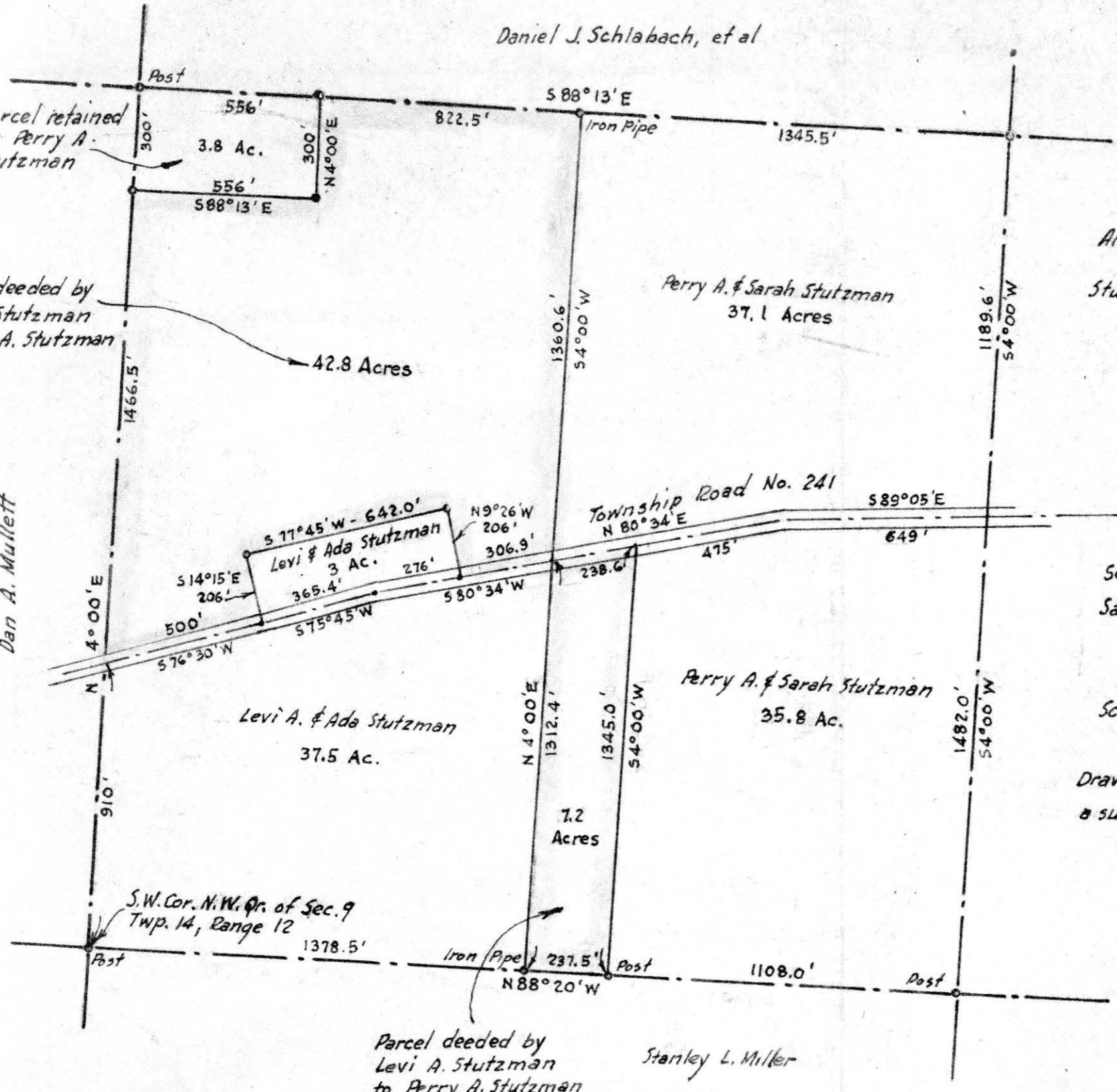
Perry A. & Sarah Stutzman 35.8 Ac.

7.2 Acres

S.W. Cor. N.W. Qr. of Sec. 9 Twp. 14, Range 12

Parcel deeded by Levi A. Stutzman to Perry A. Stutzman

Stanley L. Miller



74214

VOL 3 PAGE 82 B

REC'D: January 31, 1963

AT 10:22 O'CLOCK A.M.

RECORDED: Feb. 1, 1963

HOLMES CO. PLAT VOL 3 PG 82-B

FEE: \$1.00

Evelyn Anderson, RECORDER
s.a.

Susie Vutzy, et al



Susan Swartzentruber

3.45 Acres

R.A. Swartzentruber



MAP
SHOWING LOCATION
OF A PARCEL OF LAND
DEEDED BY
R.A. SWARTZENTRUBER
TO
PLEASANT VIEW CHURCH
IN

Lots 27 & 28, 4th Qr. Twp., Twp. 10, Range 5
Paint Township, Holmes County
Ohio

Scale 1" = 100 Ft.

Dec. 1962

Drawn from
survey by

William Sellner
Reg. Sur. No. 3915

Pleasant View Church

R.A. Swartzentruber

Berlin

