

74031

REC'D December 20-1962

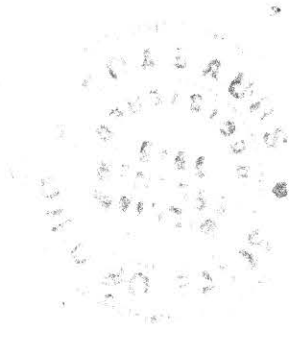
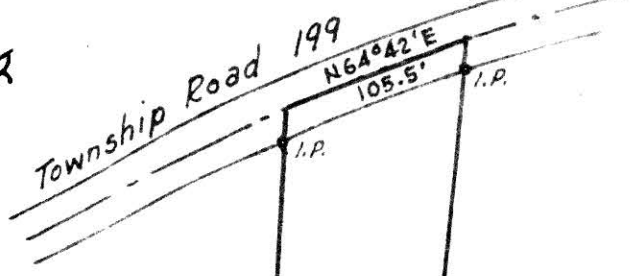
AT 1:50 O'CLOCK P.M.

RECORDED Dec. 21, 1962

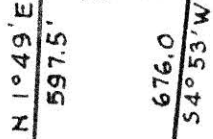
HOLMES CO. VOL 3 PG. 818

FEE: \$1.00

*Ernest J. Anderson* RECORDER



1.2 Acres



H. H. Palmer

Noah D. Miller



MAP  
SHOWING LOCATION  
OF A PARCEL OF LAND  
DEEDED BY  
NOAH D. MILLER  
TO  
EDWARD TYLKE  
IN

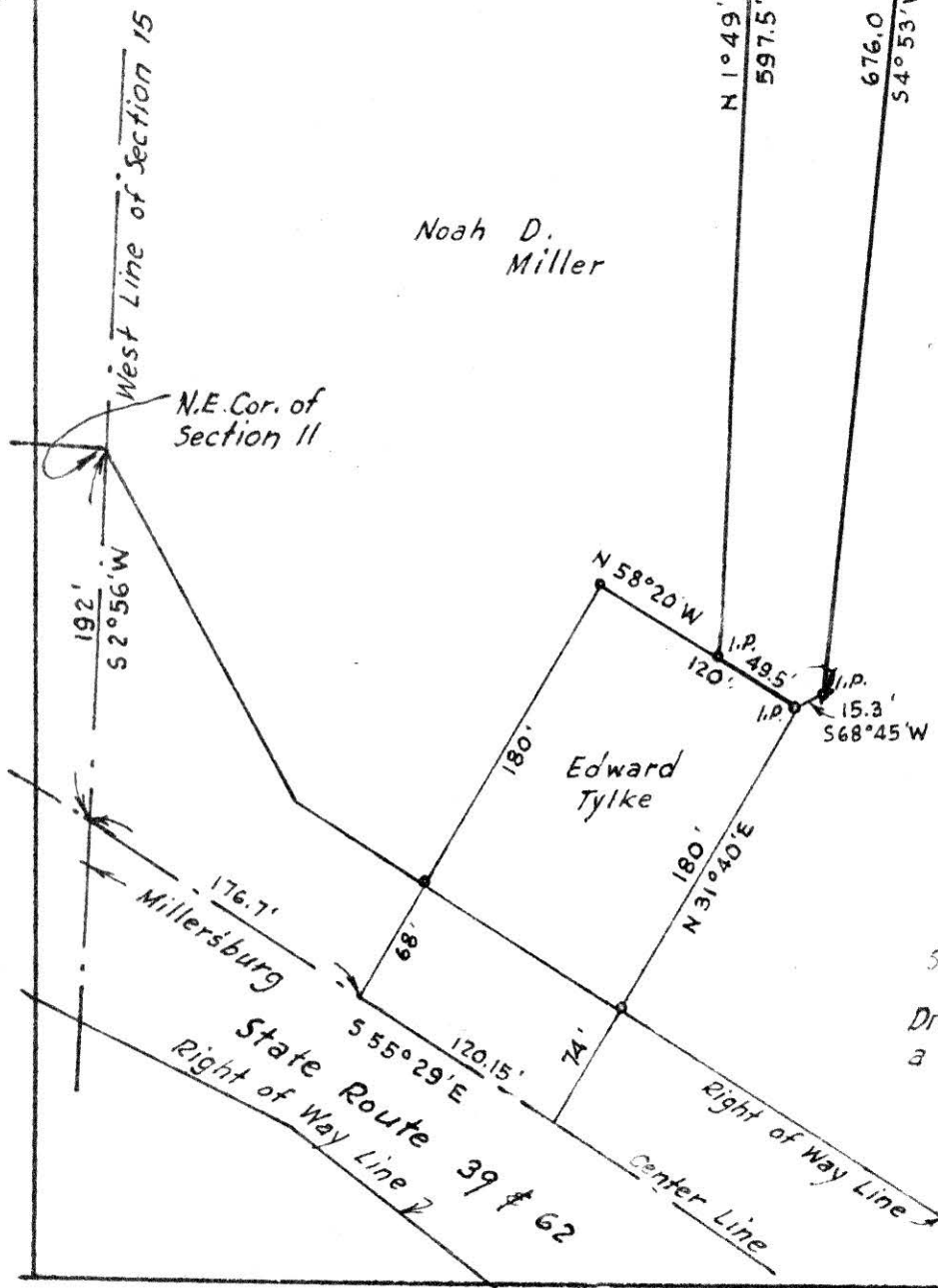
Section 15, Township 9, Range 6  
Hardy Township, Holmes County  
Ohio

Scale 1" = 100 ft.

Nov. 1962

Drawn from  
a survey by

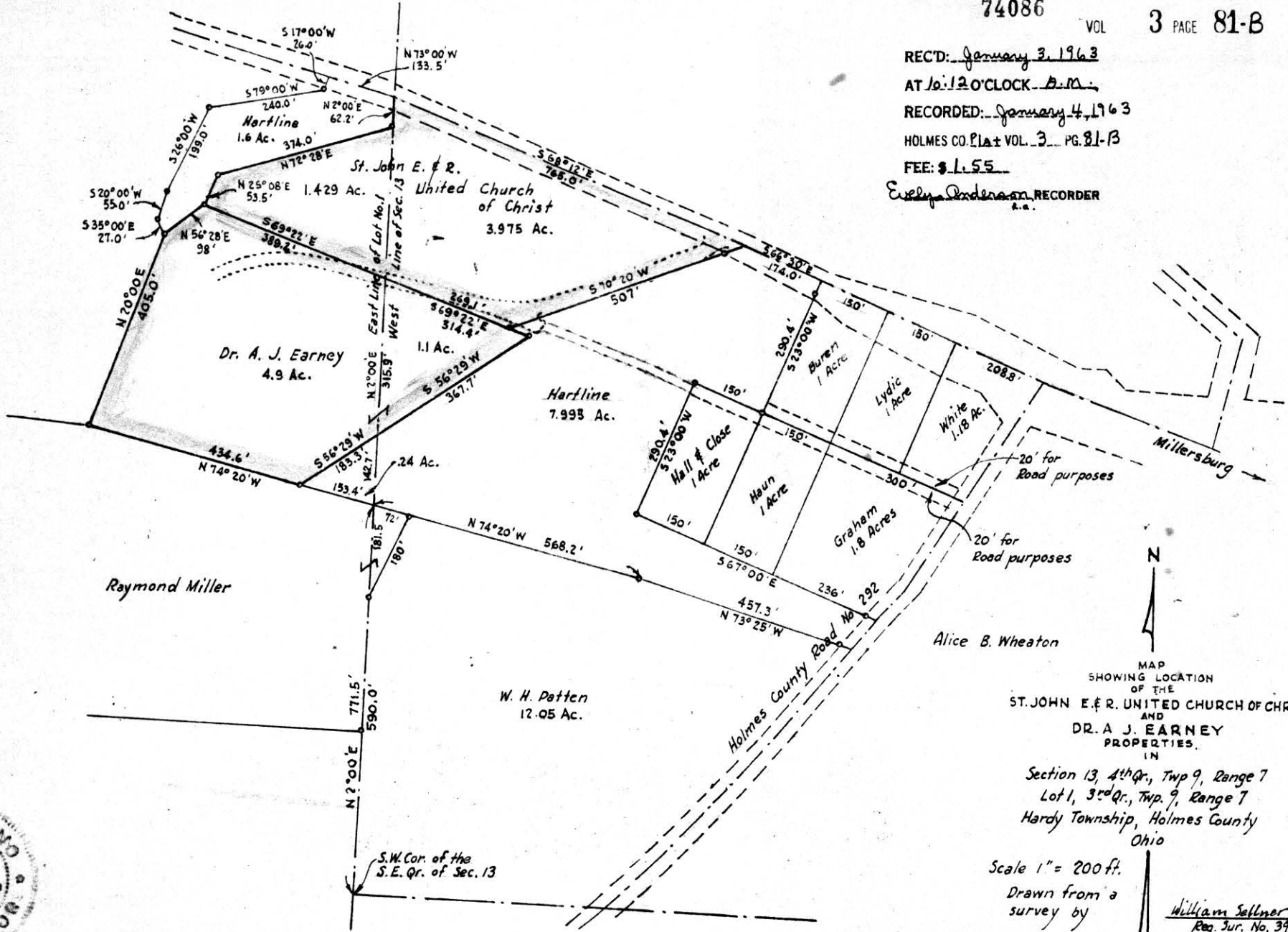
*William Sellner*  
Reg. Sur. No. 3915



15 1/4 X 10

REC'D: January 3, 1963  
AT 10:12 O'CLOCK A.M.  
RECORDED: January 4, 1963  
HOLMES CO. Plat VOL. 3 PG. 81-B  
FEE: \$ 1.55

Evelyn Anderson RECORDER  
a.a.

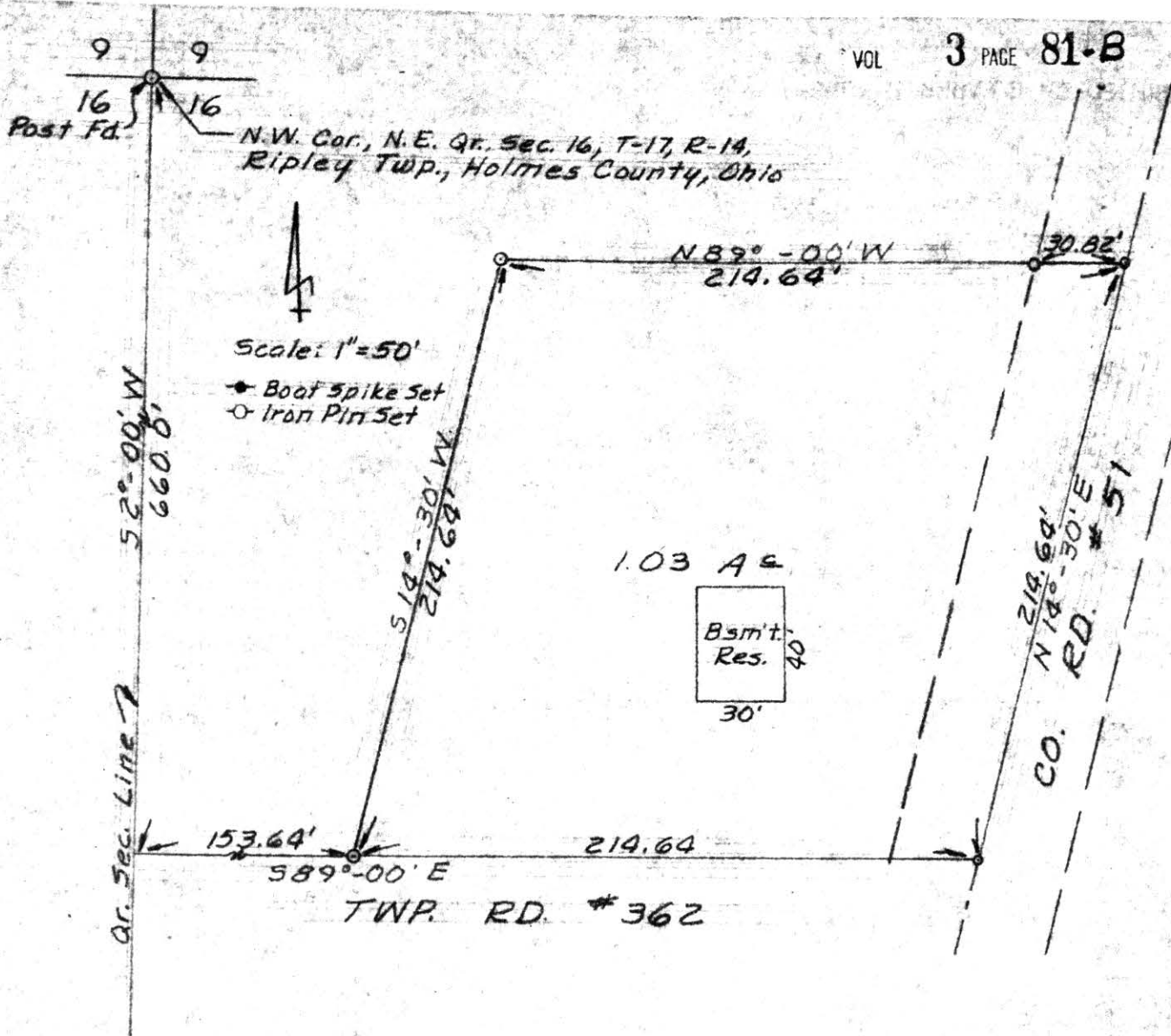


MAP  
SHOWING LOCATION  
OF THE  
ST. JOHN E. & R. UNITED CHURCH OF CHRIST  
AND  
DR. A. J. EARNEY  
PROPERTIES.  
IN  
Section 13, 4th Qr., Twp 9, Range 7  
Lot 1, 3rd Qr., Twp 9, Range 7  
Hardy Township, Holmes County  
Ohio

Scale 1" = 200 ft.  
Drawn from a  
survey by

William Sellner  
Reg. Sur. No. 3915





I hereby certify this plat to be a correct return of field notes of a survey for Ralph Anderson, in the Northeast Quarter, Section 16, T-17, R-14, Ripley Township, Holmes County, Ohio, made November 10, 1962.

74144

Ward Ray Jr.  
Ward Ray Jr. R. S. 4991

REC'D: January 14, 1963  
AT 2:55 O'CLOCK P.M.  
RECORDED: January 16, 1963  
HOLMES CO. Plat VOL. 3 PG. 81-B  
FEE: \$1.00

Coslyn Anderson RECORDER