

73596

RECT'D: October 9-1962

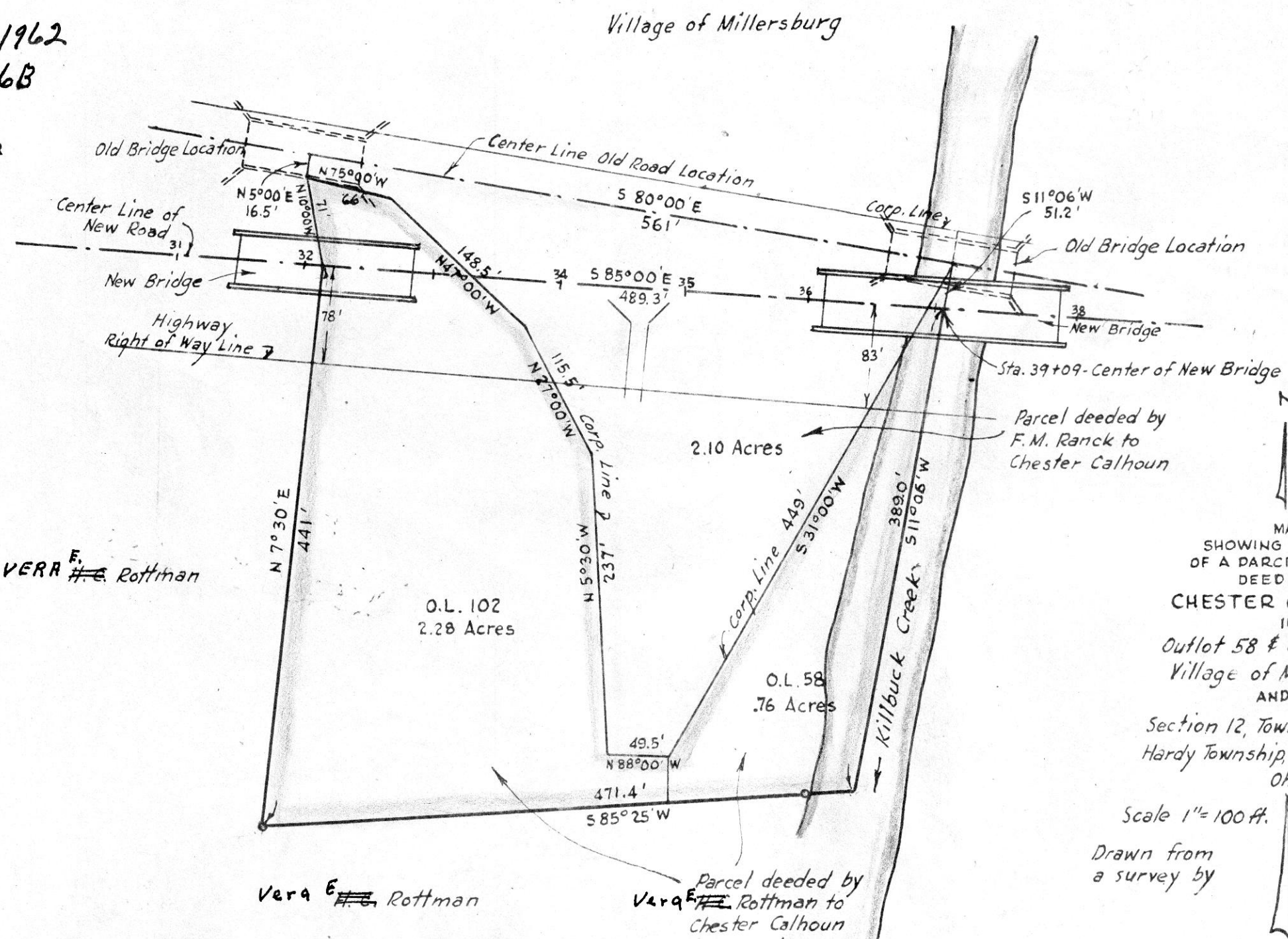
AT 11:30 CLOCK A.M.

RECORDED: October 9-1962

HOLMES CO. Plat VOL. 3 PG. 76B

FEE: \$1.50

Evelyn Anderson RECORDER



VERA ~~F.~~ E. Rottman

VERA ~~E.~~ E. Rottman

Parcel deeded by Vera E. Rottman to Chester Calhoun

Parcel deeded by F.M. Ranck to Chester Calhoun



MAP
SHOWING LOCATION
OF A PARCEL OF LAND
DEEDED TO
CHESTER CALHOUN
IN
Outlot 58 & Outlot 102
Village of Millersburg
AND IN
Section 12, Township 9, R. 7
Hardy Township, Holmes County
Ohio

Scale 1" = 100 ft.

Oct. 6, 1962

Drawn from a survey by

William Sellner
Reg. Sur. No. 3915