

Earl Miller

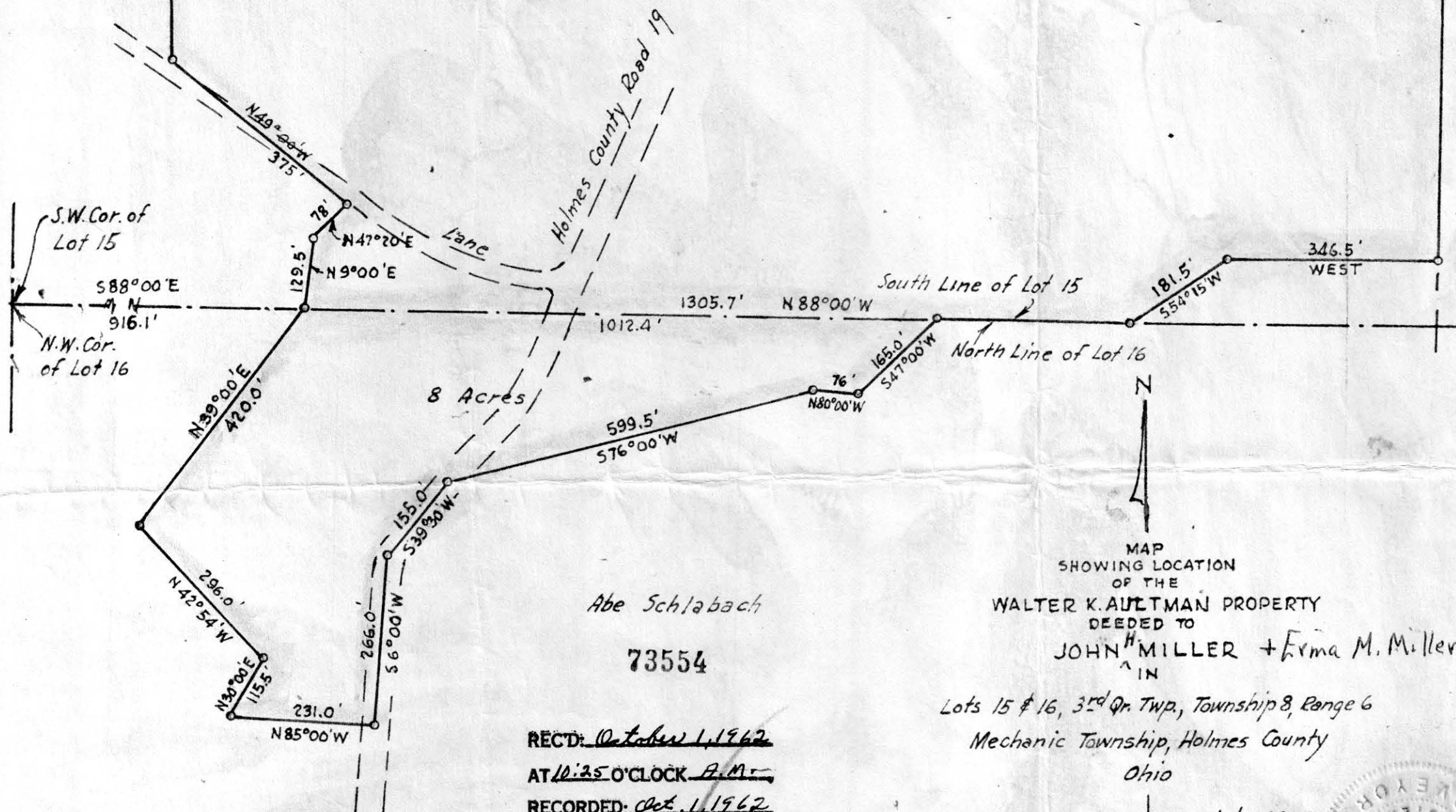
S 88° 00' W
2064.8'

Nisley

N 0° 30' E
1257.0'

1546.8
S 1° 00' W

74.48 Acres



Abe Schlabach

73554

REC'D: October 1, 1962
 AT 10:25 O'CLOCK A.M.
 RECORDED: Oct. 1, 1962
 HOLMES CO. PLAT VOL. 3 PG. 25-B
 FEE: \$1.80

Carly Anderson RECORDER

MAP
 SHOWING LOCATION
 OF THE
 WALTER K. AULTMAN PROPERTY
 DEEDED TO
 JOHN H. MILLER + Erma M. Miller
 IN

Lots 15 & 16, 3rd Qr. Twp., Township 8, Range 6
 Mechanic Township, Holmes County
 Ohio

Scale 1" = 200 ft.

Drawn from a
survey by

July 1962

William Soltner

Reg. Sur. No. 3915





N.E. Cor. of the
S.E. Q. of
Section 5

N 89° 30' W
741.5'

Stone
54° 30' E
1005.2'
Stone

REC'D: October 11, 1962

AT 10:30 O'CLOCK A.M.

RECORDED: Oct. 11, 1962

HOLMES CO PLAT VOL 3 PG. 75-B

SEE: \$ 1.00

Evelyn Anderson RECORDER

Tobias M.
Yoder

Valentine Erb

Valentine Erb

Grist Mill

.037 Acres
deeded by
Valentine Erb to
Eli M. Miller

.716 Ac.
Deeded by
Tobias M. Yoder
to Eli M. Miller

.038 Acres
deeded by
Noah A. Raber to
Eli M. Miller

MAP
SHOWING LOCATION
OF THE
ELI M. MILLER
PROPERTY

IN
Section 5, Township 8, Range 5
Clark Township, Holmes County
Ohio

Scale 1" = 100ft. July 1962

Drawn from
a survey by

William Sellmer
Reg. Sur. No 3915

