

72B

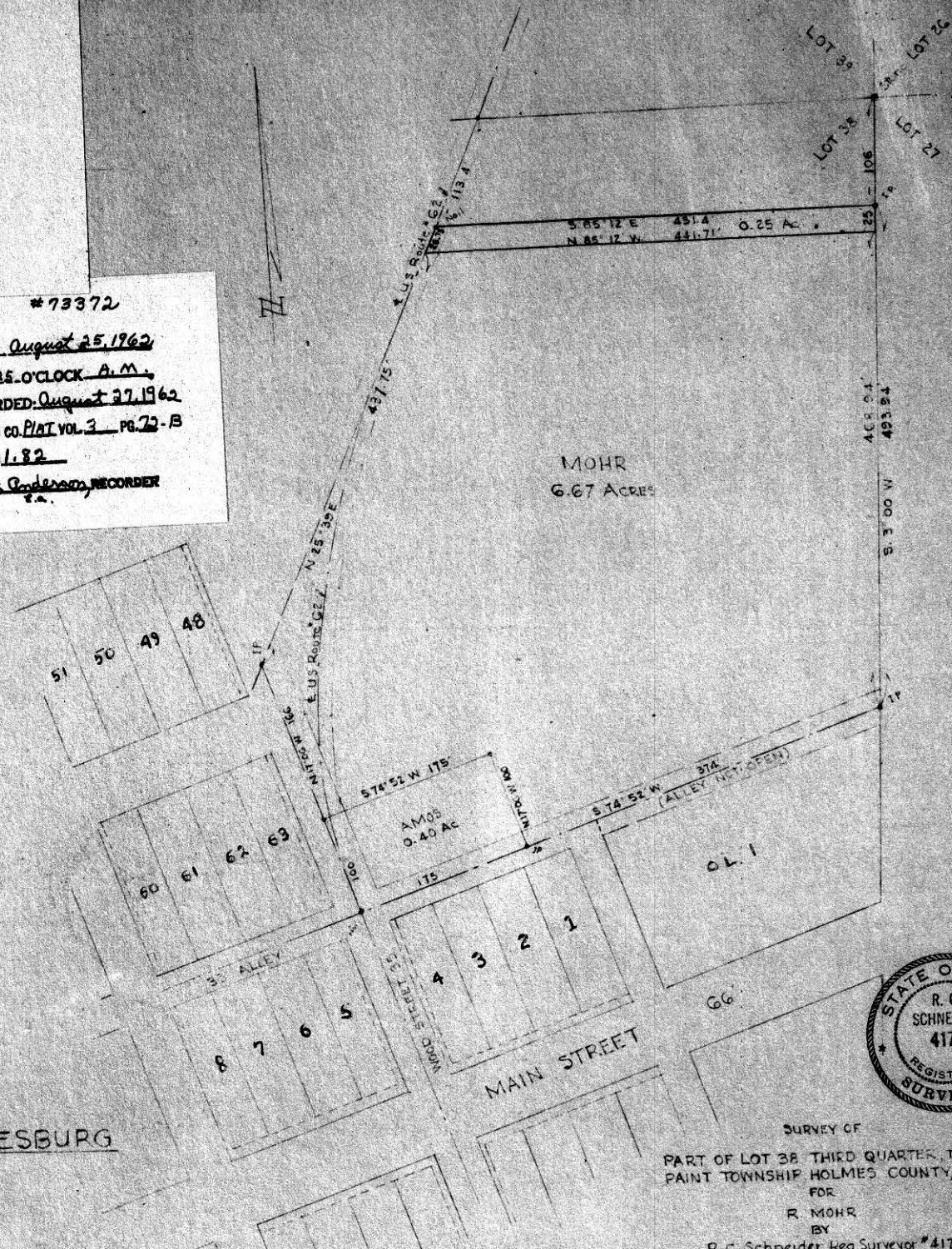
14 X 13

VOL 3 PAGE 72-B

#73372

RECTD: August 25, 1962
 AT 10:25 O'CLOCK A.M.
 RECORDED: August 27, 1962
 HOLMES CO. PLAT VOL 3 PG. 72-B
 FEE: \$1.82
 Evelyn Anderson, RECORDER
 P.A.

WINESBURG



SURVEY OF
 PART OF LOT 38 THIRD QUARTER, TWP 10, R. 4,
 PAINT TOWNSHIP HOLMES COUNTY, OHIO
 FOR
 R. MOHR
 BY
 R. C. Schneider Reg Surveyor #4177
 SCALE: 1"=100'
 MAY 1960
 Rev June, 1962

Paul Jones

Fred D. Jones

J. Leppla
44 Acres

Property Line
24' LANE N 0° 30' E

1.02 Acres
PARCEL 1

.89 Acres
PARCEL 2

.89 Acres
PARCEL 3

.73 Acres
PARCEL 4

Olin J. Miller
1 Acre

STATE ROUTE 39

Milfersburg

Ripley Twp.
Knox Twp.

North Line of Section 19

N 88° 30' W
1294.6'

N.E. Cr. of
the N.W. Cr.
of Sec. 19

Township Road 325

MAP
SHOWING LOCATION
OF A PARCEL OF LAND

DEEDED BY
PAUL JONES

TO
PHILLIP HAZLETT

IN
Section 19, Township 18, Range 14
Knox Township Holmes County
Ohio

Scale 1" = 100 ft.

August 1962

Drawn from a
survey by

William Seltner

Reg. Sur. No. 3915

73409

RECD: September 4-1962

AT 9:45 O'CLOCK A.M.

RECORDED: Sept. 4-1962

HOLMES CO. VOL. 3 PG 22B

FEE: \$1.50

W. Seltner RECORDER