

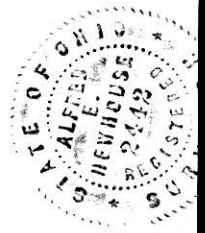
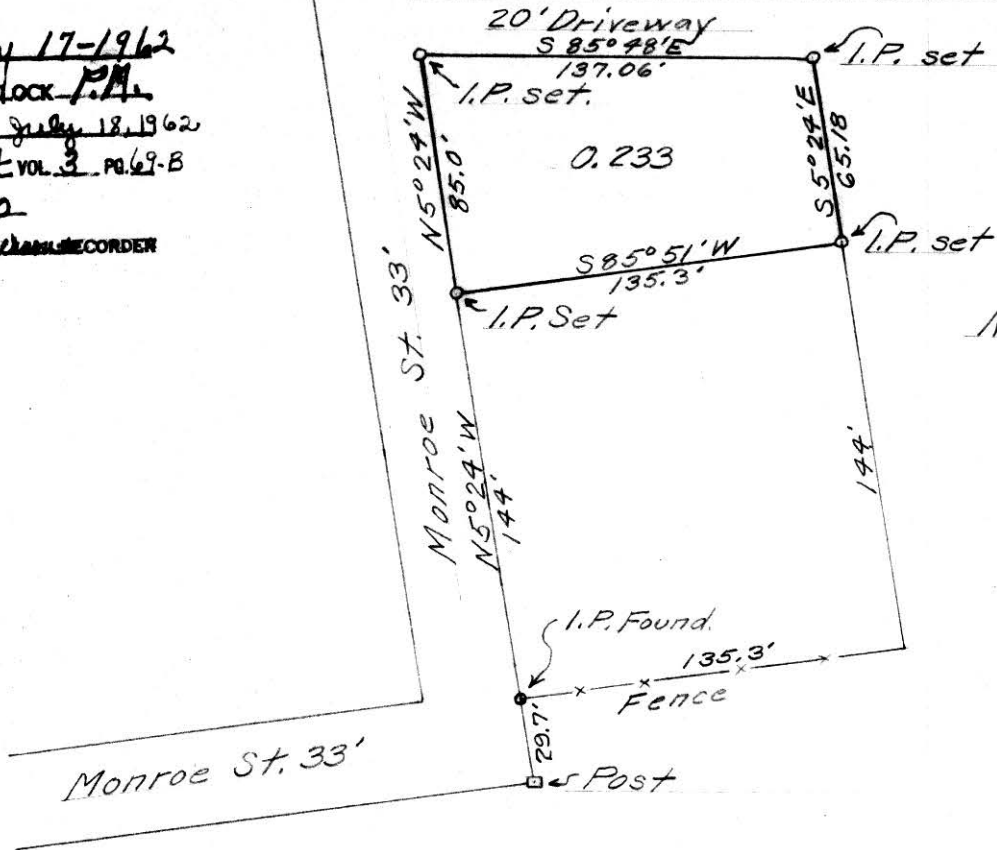
69 B

10" x 11"

73138

RECT: July 17-1962
AT 1:30 O'CLOCK P.M.
RECORDED: July 18, 1962
HOLMES CO. Plat VOL. 3 PG. 69-B
FEE: \$1.10

Ernest Anderson RECORDER



Survey of
0.233 Acre Tract in
Section 19 - Tp. 9 - Range 7
Village of Millersburg
Scale 1" = 50' 7-13-62

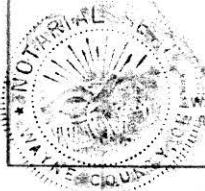
Certificate of Engineer

I, the undersigned, hereby certify that this map is true and correct to the best of my knowledge.

Alfred E. Newhouse
REGISTERED SURVEYOR NO. 2442

Acknowledged before me a Notary Public in
and for Wayne Co., Ohio this 16 day of
July 1962

W. K. ... Notary Public



Microfilmed up to 69 B.
73138

N 1/2 SW 1/4
 N 1/2 NE 1/4
 S 1/2 SW 1/4
 S 1/2 NE 1/4
 SEC 35

1521.96'
 (23 Chains, 6 Links)

S 30° W, 834.0'
 (12 Ch, 65 Links)

(7 Chains, 84 Links)
 S 69° E
 356.44'



73188

REC'D: July 26, 1962
 AT 1:30 O'CLOCK P.M.
 RECORDED: July 27, 1962
 HOLMES CO. PLAT VOL 3 PG. 69-B.
 FEE: \$1.00
 Evelyn Anderson, RECORDER
 Co.

KEIM

0.907 ACRE

KADFFMAN

U.S. ROUTE 62
 S 33° 30' W 264'
 N 34° E 230'
 161'



SURVEY OF PART OF THE SOUTHEAST QUARTER
 OF SECTION 35, TOWNSHIP 15, RANGE 11, PAINT
 TOWNSHIP, HOLMES COUNTY, OHIO TO CONVEY A
 PARCEL FROM KEIM TO GROSSNIKLAUS.

SCALE - 1" = 100'

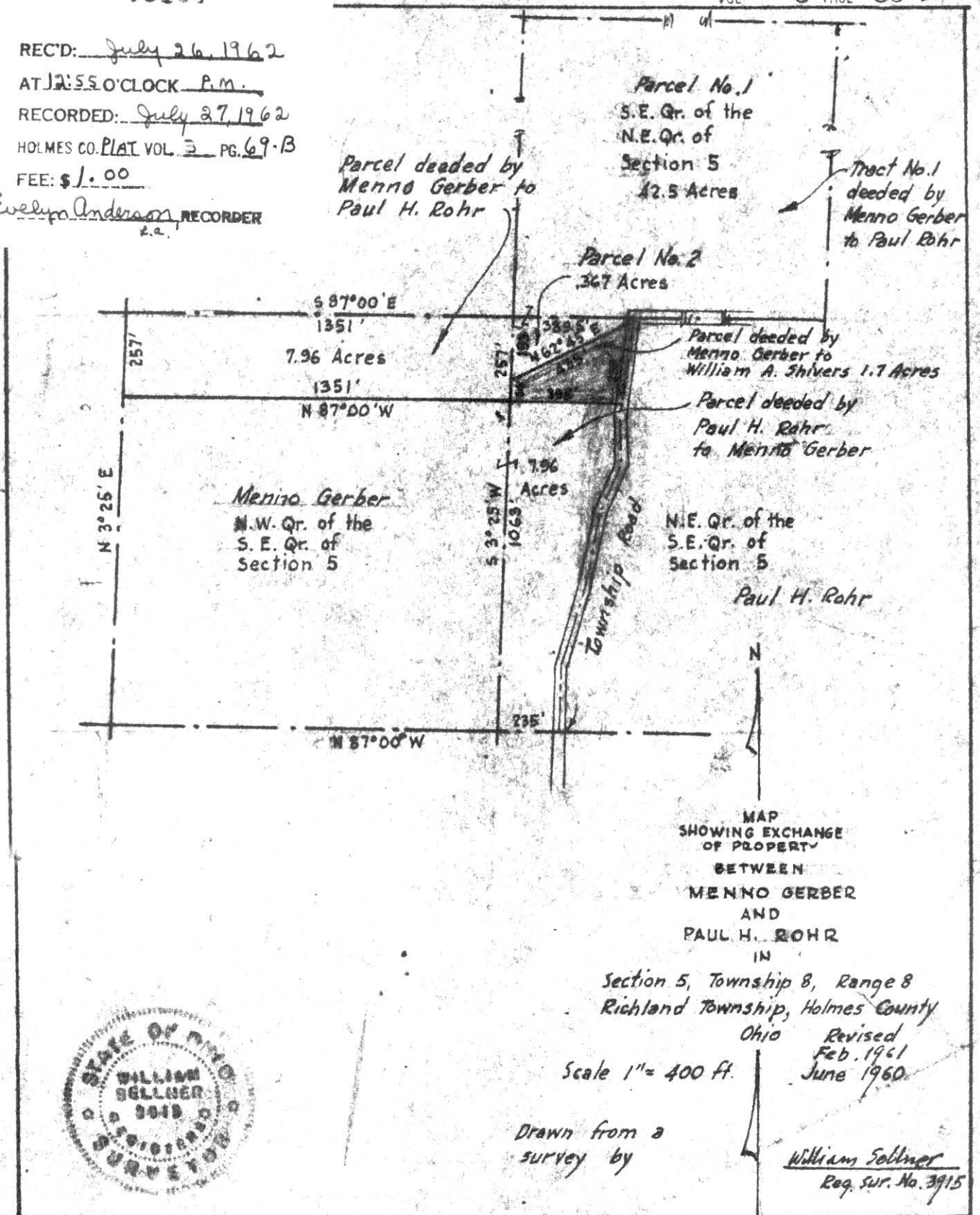
JUNE 16, 1962.

SURVEY BY RC SCHNEIDER #4177 & RH HUNSINGER #3685
 REGISTERED SURVEYORS.

73187

REC'D: July 26, 1962
AT 12:55 O'CLOCK P.M.
RECORDED: July 27, 1962
HOLMES CO. PLAT VOL 3 PG. 69-B
FEE: \$ 1.00

Evelyn Anderson RECORDER
e.a.



Drawn from a survey by

William Sellner
Reg. Sur. No. 3915