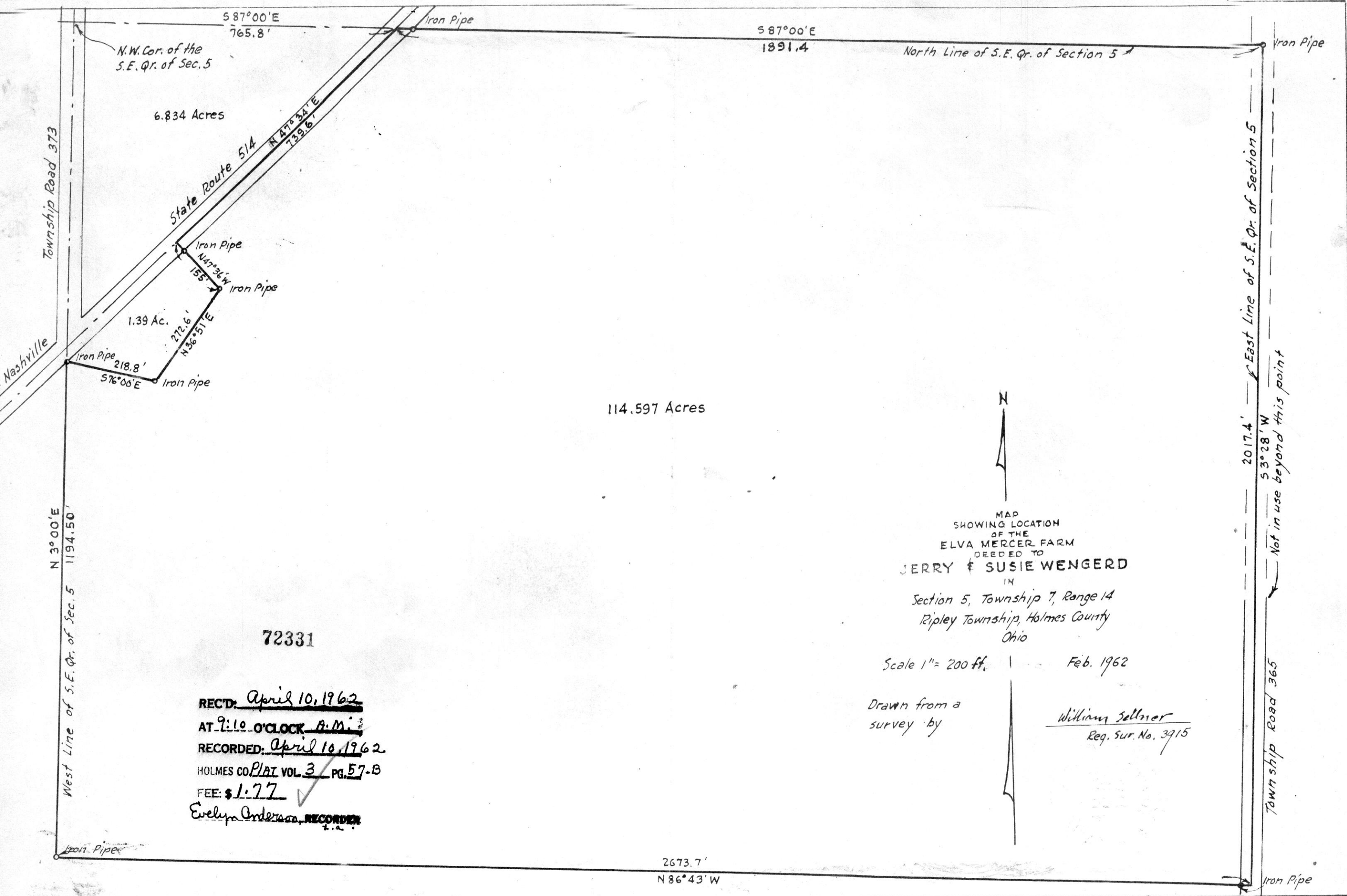


16 1/2 x 10 3/4



MAP
 SHOWING LOCATION
 OF THE
 ELVA MERCER FARM
 DEEDED TO
JERRY & SUSIE WENGERD
 IN
 Section 5, Township 7, Range 14
 Ripley Township, Holmes County
 Ohio

Scale 1" = 200 ft. Feb. 1962

Drawn from a
 survey by

William Sellmer
 Reg. Sur. No. 3915

72331

REC'D: April 10, 1962
 AT 9:10 O'CLOCK A.M.
 RECORDED: April 10, 1962
 HOLMES CO. PLAT VOL. 3 PG. 57-B
 FEE: \$1.77
Evelyn Anderson RECORDER

2673.7'
 N 86°43' W