

19" x 10"

RT. 557

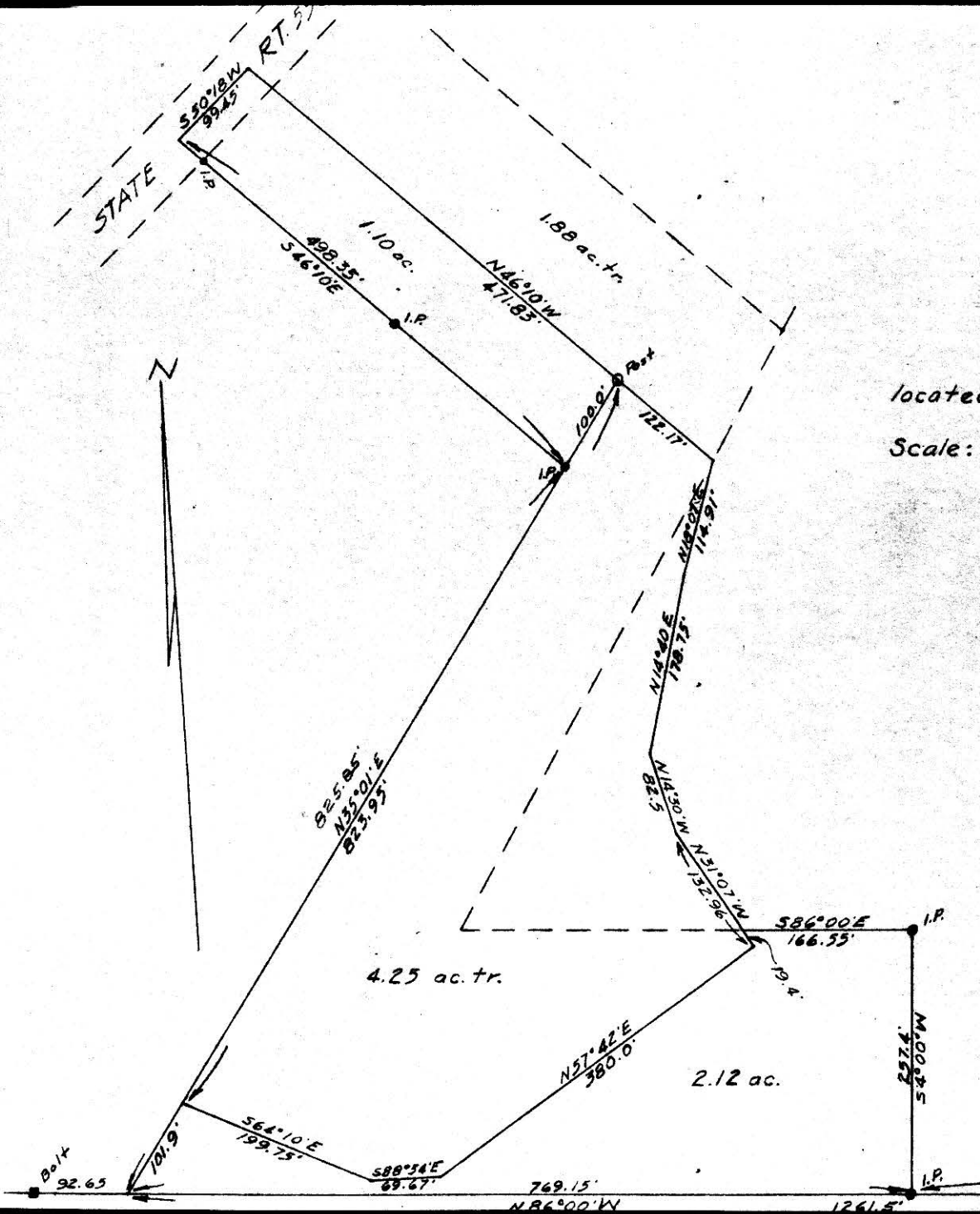
71624

REC'D: December 7-1961
AT 2:30 O'CLOCK P.M.
RECORDED: December 8, 1961
HOLMES CO. REC'D. 3 P. 51 B
FEE: \$1.90

Erly Anderson

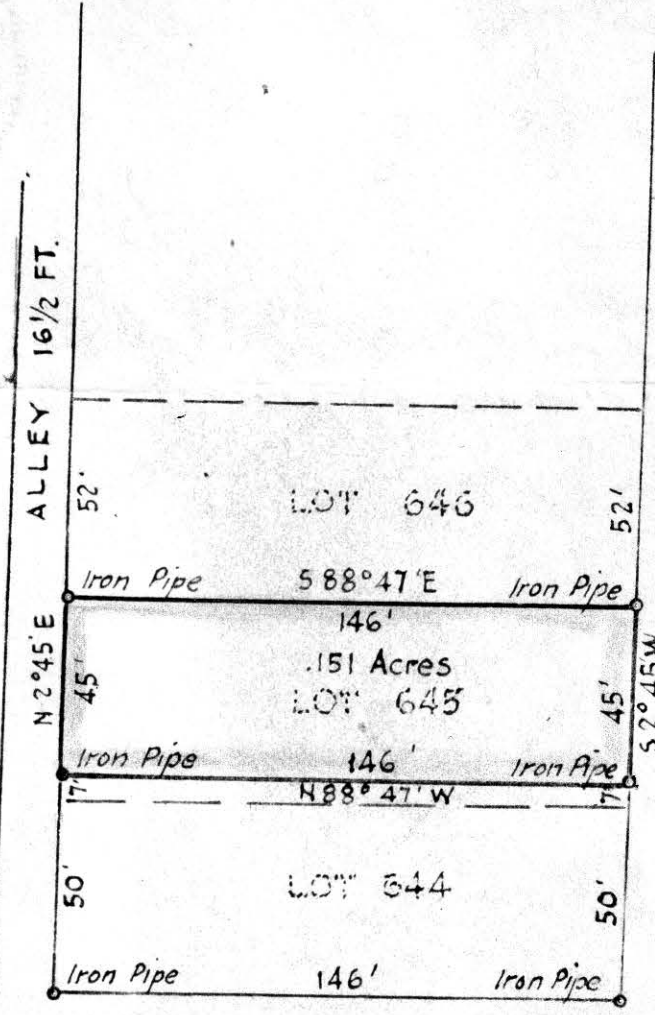
Plat of Survey for
Levi E. Miller
located in the N.E. Qr. of Sec. 12, T8, R5
Clark Twp. Holmes Co.
Scale: 1 in = 100 ft. June 27, 1961

Surveyed by *D. W. Miller*
D.V. Miller
Reg. Surveyor
4045



SE. Cor. of
NE. Qr. Sec. 12

REC'D: December 11-1961
AT 4:50 O'CLOCK P.M.
RECORDED: December 11-1961
HOLMES COS. VOL. 3 PG. 51B
FEE: \$ 1.00
Carly Anderson RECORDER



ALEXANDER STREET 49 1/2 FT.

ALLEY 16 1/2 FT.

PEARL STREET 24 FT.

Iron Pin set in concrete



MAP
SHOWING LOCATION
OF A PART OF
LOT NO. 645
DEEDED BY
EDITH LOW
TO
HELEN SMITH
IN THE
Village of Millersburg
Hardy Township, Holmes County
Ohio

These lots are a part of the J.C. Calhoun Addition to Millersburg. See Volume 1, Page 262, Holmes County Plat Records for original lot layout.

Scale 1" = 50 ft.

Dec. 1961

Drawn from a survey by

William Sellner
Reg. Sur. No. 3915