

MAP  
SHOWING DIVISION  
OF THE  
ELI E. TROYER  
FARM

IN  
Sections 18, 23, lot 4, Twp. 9, Range 5  
Walnut Creek Twp., Holmes County  
Ohio

Scale 1" = 200 ft.

July 1961

Drawn from a  
survey by

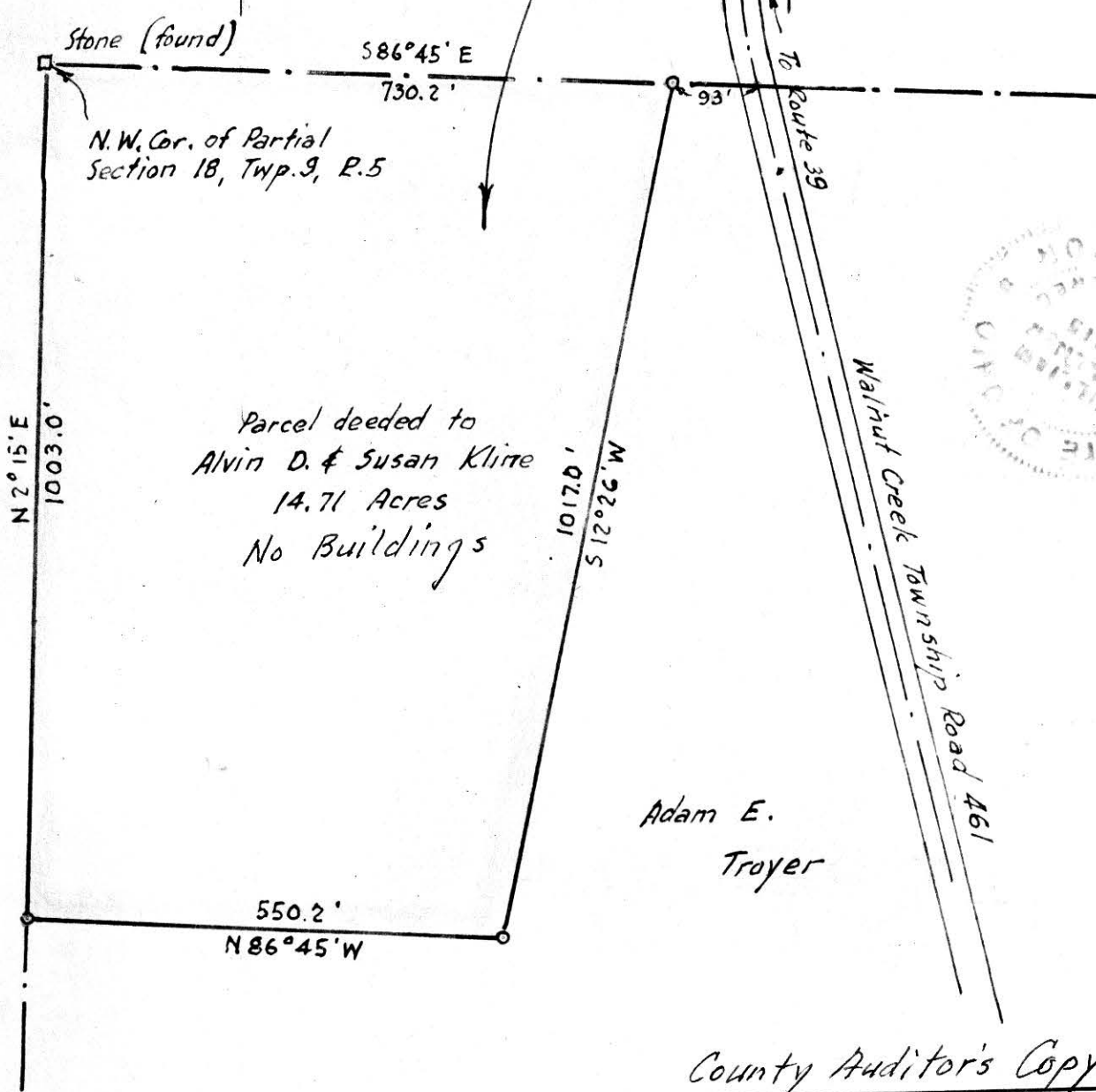
William Sellmer  
Req. Sur. No. 3915

Parcel deeded to  
Alvin & Susan  
Kline  
(14.71)  
Ac.

Parcels deeded to  
Adam E. & Amanda  
Troyer  
(44.79 Ac.)

Parcels deeded to  
Eli. F. Detweiler  
(14.11 Ac.)

SOld TO  
JOHN BROWN  
1940  
D.B. 103 P. 58



County Auditor's Copy

71592

REC'D: December 2 - 1961

AT 10:50 O'CLOCK H.M.

RECORDED: December 5 - 1961

HOLMES COUNTY VOL. 3 PG. 50B

FEE: \$ 1.00

C. Anderson RECORDER

71712

REC'D: December 26 - 1961

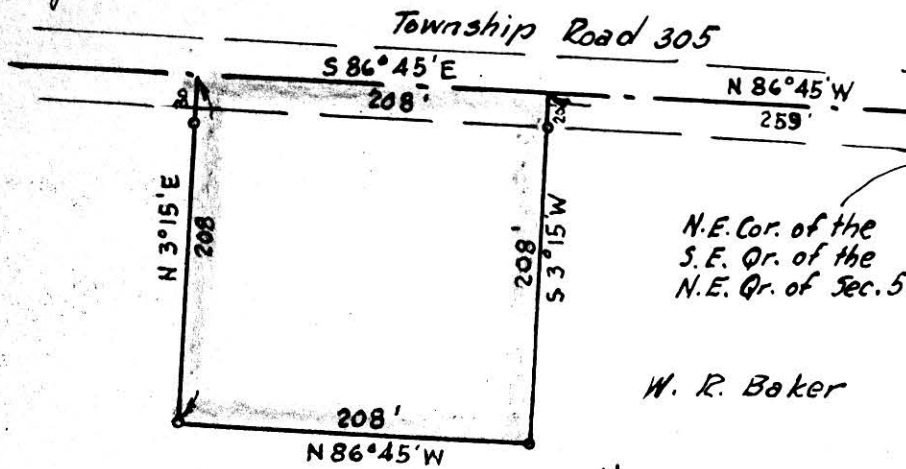
AT 9:35 O'CLOCK H. M.

RECORDED: December 26 1961

HOLMES CO. Plat VOL. 3 PG. 50B.

FEE: \$ 1.00

W. R. Baker RECORDER



W.R. Baker



MAP  
SHOWING LOCATION  
OF A PARCEL OF LAND  
DEEDED BY  
W.R. & MARY BAKER  
TO

IN

Section 5, Township 8, Range 7  
Killbuck Township Holmes County  
Ohio

Scale 1" = 100 ft.

October 1961

Drawn from a  
survey by

William Sellmer  
Reg. Sur. No. 3915

