

16 1/4 x 10 1/2

71580

REC'D: November 28-1961
AT 3:40 CLOCK P.M.
RECORDED: November 29-1961
HOLMES CO. PL VOL. 3 PG. 49B
FEE: \$ 1.70

Evly Anderson RECORDER

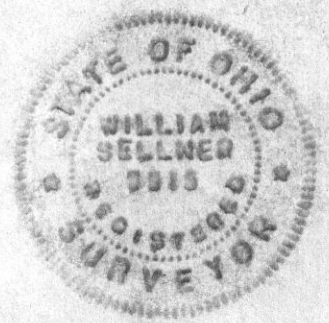
N
MAP
SHOWING RELOCATION
OF
LOGSDON STREET
ON THE
HARRY C. LOGSDON PROPERTY
IN
The Village of Millersburg
Section 19, Township 9, Range 7
Hardy Township, Holmes County
Ohio

Scale 1" = 50 ft.

Aug. 1961

Drawn from
a survey by

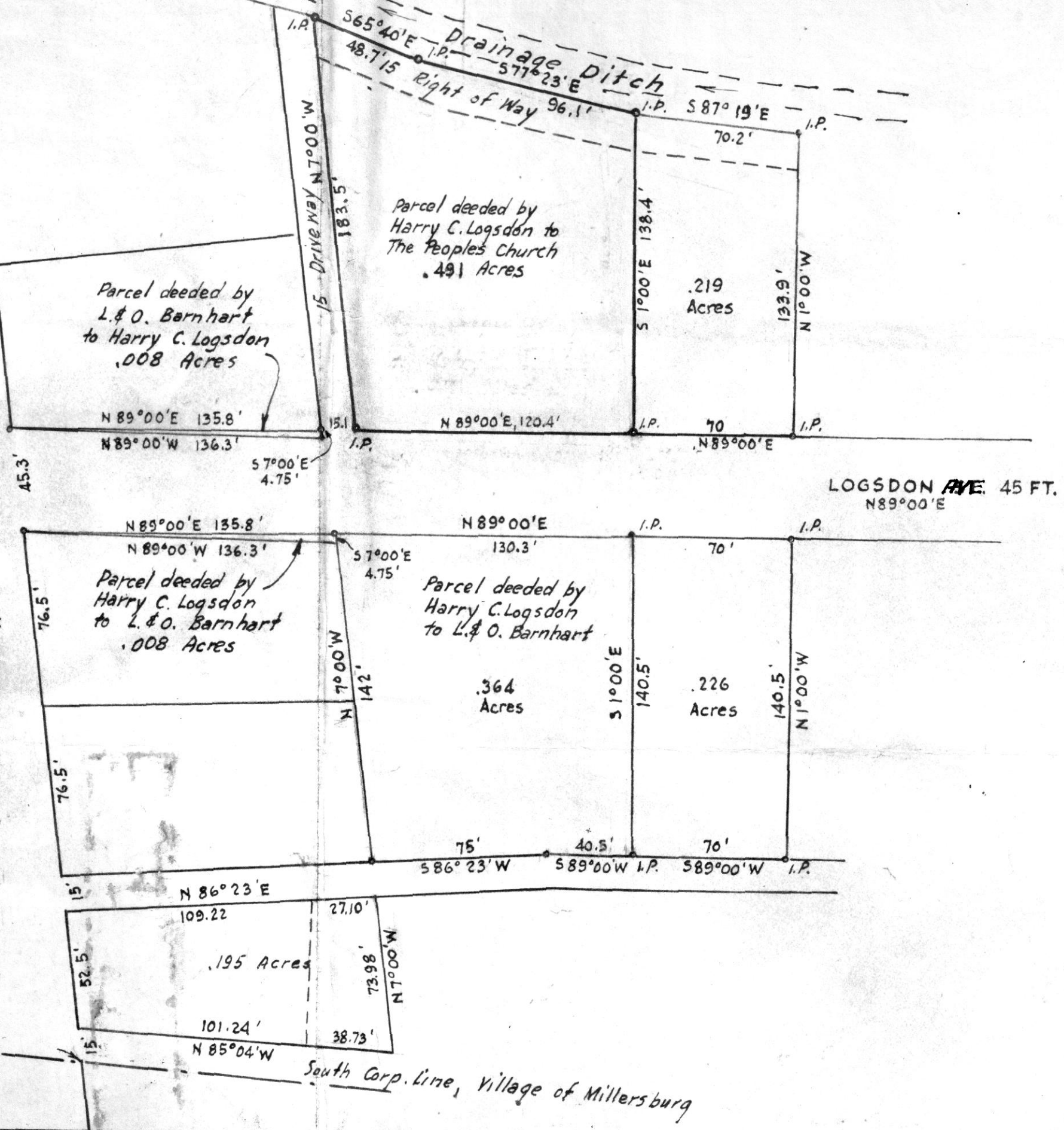
William Sellner
Reg. Sur. No. 3915



S.W. Cor. of the
N.E. Qr. of
Section 19

Stone
S 85° 04' E
10 N
543.4'

SOUTH WASHINGTON STREET
N 7° 00' W



LOGSDON AVE. 45 FT.
N 89° 00' E

South Corp. Line, Village of Millersburg